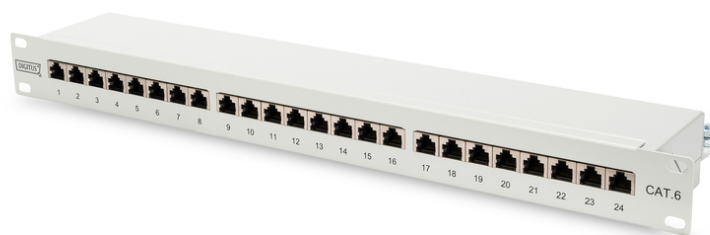


DIGITUS CAT 6, Class E Patch Panel

DN-91624S

EAN 4016032241614



CAT 6 patch panel, shielded, 24-port RJ45, 8P8C, LSA, 1U, rack mount, grey, 482x44x109 mm

The shielded CAT 6 Patch Panel from DIGITUS® is available as 16- or 24-port version. It is manufactured acc. to Link Performance Class E, for up to 250 MHz, EN 50173 and ISO/IEC 11801 and complies with the 802.3at PoE+ and the 802.3af PoE standard. The housing is made of 1.5 mm galvanized cold-rolled steel and is therefore perfectly suitable for 19" rack mounting.

Future-oriented standards and high-end quality for your network.

- Area of application: Up to 250 MHz, 1GBase-T
- Norms: ISO/IEC 11801 3rd Ed., EN 50173-1, EIA/TIA 568-C
- General properties:
- Suitable for 483 mm (19") cabinet mounting
- RJ45 female, 8P8C
- Cable installation via LSA strips, color coded according to EIA/TIA 568 A & B
- Cable fixing with smart cable ties
- Central ground connection
- 360° shield coverage
- Mechanical properties:
- Housing material: 1.5 mm galvanic cold rolled steel, acc. to EN1.4301, UNS S30400, AISI 304 and LMSAD110
- RJ45 female material: ABS UL 94V-0

- RJ45 female contact: Tinned phosphor bronze, 0.5 µ gold-plated contact
- RJ45 shielding: Tinned bronze
- LSA termination clamp: Krone LSA+, UL 94V-2, zinc plated phosphor bronze
- Ground wire: Not included
- Conductor plate: FR4, UL 94V-0
- Physical properties:
- Insertion force: 30N max. (IEC 60603-7-5)
- Retention strength: 7.7 kg between jack and plug
- Operation temperature: -20° C to +70 °C (ISO/IEC 11801, EN 50173-1, ANSI/TIA/EIA 568 C)
- Mating cycles female: > 750 acc. to ISO/IEC 11801, IEC 60603-7-5
- Clamp: > 200 acc. to ISO/IEC 11801, IEC 60603-7-5
- IDC wire size: 22 – 26 AWG solid and stranded conductor
- Insulation resistance: > 500 MOhm
- Contact resistance: < 20 MilliOhm
- Dielectric strength: 1000 VDC (Contact/Contact), 1500 VDC (Contact/Ground)

Attributes

- Color: light grey, RAL 7035
- Ports: 24
- Units: 1
- Category: CAT 6

Logistics

| | Number (pcs) | Weight (kg) | Depth (cm) | Width (cm) | Height (cm) | cm³ |
|------------------------------|--------------|-------------|------------|------------|-------------|--------------|
| Packaging Unit Carton | 8 | 12,448.00 | 58.00 | 32.00 | 34.00 | 63,104.00 |
| Packaging Unit Inside | 1 | 1,556.00 | 7.50 | 56.00 | 15.00 | 6,300.00 |
| Packaging Unit Single | 1 | 1,556.00 | 51.50 | 5.50 | 13.50 | 3,823,880.00 |
| Net single without Packaging | 0 | 1.50 | 11.00 | 48.30 | 4.50 | 2,390.85 |

More images:

