

Ubiquiti Ubiquiti F-POE-G2 - Optical Data Transport for Outdoor PoE Devices

UB-FIBER-POE
EAN 9010386007143



Overcome PoE limitations with the next-generation FiberPoE(TM), model F-POE-G2. The FiberPoE Gen 2 is a lowcost solution for outdoor deployments that require long-distance runs to reach the PoE device. Deployments with the FiberPoE Gen 2 provide significant EMI and ESD protection over typical PoE installations. The FiberPoE Gen 2 also features a durable, weatherproof form factor and enhanced surge protection. Separate Data and Power Transport: PoE is ideal for indoor or short-run installations. However, for outdoor, long-distance installations, PoE becomes vulnerable to EMI and is limited to 100 meters with correlated power loss. With the FiberPoE Gen 2, data and power are transported on separate cables to greatly improve data integrity and enable much longer cable runs. The FiberPoE Gen 2 provides Gigabit bi-directional data transport between twisted-pair Ethernet cable and fiber optic cable, and injects DC power to the Ethernet cable for passive PoE. Use one FiberPoE Gen 2 device as an FibertoEthernet Converter, or a pair of FiberPoE Gen 2 devices to create a Fiber Bridge.

- Dimensions: 196.4 x 93.5 x 32.4 mm (7.73 x 3.68 x 1.28")
- Weight: 288 g (10.2 oz)
- Enclosure: White polycarbonate
- Interface connections:
- (1) 1 Gbps SFP port
- (1) DC terminal block
- (1) DC RJ45 port DC injection
- (1) 1000 Mbps Ethernet PoE port

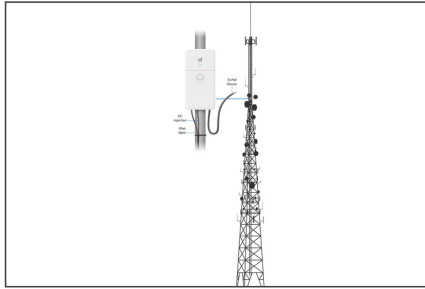
- Typical power consumption: 1.5 W
- Power method:
- DC terminal block, 2-wire, 24 V DC or 50 V DC
- DC In RJ45 port, 2-pair (4, 5+; 7, 8-), (24 V DC input), or 4-pair (24 V DC or 50 V DC input) passthrough
- PoE RJ45 port, 2-pair (4, 5+; 7, 8-), (24 V DC input), or 4-pair (24 V DC or 50 V DC input) PoE passthrough
- PoE output: PoE RJ45 port, 2-pair (4, 5+; 7, 8-), (24 V DC), or 4-pair (24 V DC or 50 V DC) PoE
- DC output: Terminal block, 2-wire (24 V DC or 50 V DC)
- Input DC voltage: 16 to 57 V
- Surge protection: Built-in high-current gas discharge tube for DC terminal block and PoE port
- LED:
- White: Power on
- Blue: Connected
- Blue (flashing): Activity
- Operating temperature: -40°C to 60°C (-40°F to 140°F)
- Operating humidity: 10 to 95% non-condensing
- ESD/EMP protection: +/- 24 kV contact/air for Ethernet
- Certifications: CE, FCC, IC

Attributes

- DDM Support: no
- Industrial usage: no
- PoE injector: no

Logistics						
	Number (pcs)	Weight (kg)	Depth (cm)	Width (cm)	Height (cm)	cm³
Packaging Unit Carton	1	0.30	0.00	0.00	0.00	0.00
Packaging Unit Inside	1	0.30	0.00	0.00	0.00	0.00
Packaging Unit Single	1	0.30	0.00	0.00	0.00	0.00
Net single without Packaging	0	0.00	0.00	0.00	0.00	0.00

More images:



EU responsible person

EU based economic operator ensuring the product complies with the required regulations.

Discomp s.r.o

Dopravní 1218/2a

Plzeň, Czech Republic

<https://www.discomp.cz/>

info@discomp.cz