

DIGITUS® Outdoor 1 to 2 port UPoE Extender, IEEE803.2af/at 2 Port

DN-95126-1

EAN 4016032479710



Outdoor 1 to 2 UPoE Extender IEEE803.2af/at 1 port in 95W, 2 ports out supports 75W/30W/15,4W

DN-95126-1 is a Gigabit IP67 waterproof PoE extender. It Supports one RJ45 (PD) port with IEEE802.3bt Standard up to 95W. Two Ports has PSE function, each supporting up to 30 W PoE output, without configuration, easy plug and play installation.

Complies with IEEE802.3af/at/bt Standard

- Supported Standards: IEEE802.3, IEEE802.3u, IEEE802.3ab, IEEE802.3x, IEEE802.3af, IEEE802.3at, IEEE802.3bt
- Ports: 1 x PoE in (up to 95 W), 2x PoE out (10/100/1000 Mbps)
- PoE Standard: IEEE802.3af/at/bt
- Dimensions(L*W*H): 150,73,44 mm

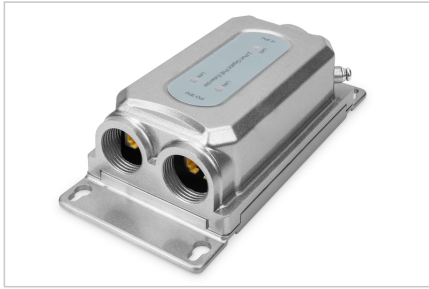
- PoE IN Port: Anode 1/2, Cathode 3/6 or Anode 4/5, Cathode 7/8
- Number of PoE Ports: 2
- Power Supply: PoE
- PD port input 95W max
- PoE Power Output: Per Poert 48-55V DC , max. 30W
- operating Temperature: -20°C to 60°C
- Storage Temperature: -40°C to 80°C
- Surge Protection: Differential mode +/- 4KV, Common mode +/- 6KV
- IP Rating: IP67
- Vandal Proof: IK10

Attributes

- Industrial usage: no

Logistics						
	Number (pcs)	Weight (kg)	Depth (cm)	Width (cm)	Height (cm)	cm³
Packaging Unit Carton	10	4.75	0.00	0.00	0.00	0.00
Packaging Unit Inside	1	0.48	0.00	0.00	0.00	0.00
Packaging Unit Single	1	0.48	0.00	0.00	0.00	0.00
Net single without Packaging	0	0.00	0.00	0.00	0.00	468.94

More images:



Safety notes

- This product is intended for indoor use only.
- Read all instructions and follow all warnings and instructions on the device.
- Do not place this appliance on an unstable surface (such as a trolley, stand, table, etc.).
- Do not use this appliance near water.
- Do not place this appliance near or above a radiator.
- The housing is equipped with openings for heat dissipation and ventilation. To prevent overheating during operation, the ventilation openings must not be blocked or covered.
- Do not place the appliance on a soft surface (e.g. bed, sofa, blanket, etc.). This will block the ventilation.
- The appliance must not be installed in a closed environment if adequate ventilation is not guaranteed.
- Do not spray any liquids onto the appliance.
- Disconnect the mains plug before cleaning. Do not use any liquid or foam cleaners.
- Clean the appliance with a damp cloth.
- Connect the device according to the power supply on the rating plate.
- To prevent damage to the appliance, it is important that all appliances are properly earthed.
- Do not place any objects on the power cable and lay it in such a way as to avoid tripping hazards.
- Use a surge protector, a regulator or an uninterruptible power supply (UPS) to protect your system from sudden, temporary and reduced power.
- Secure the system cable and mains cable properly and ensure that no objects are pressing on the cable.
- Do not insert any objects into the appliance through the openings in the housing. There is a risk of a short circuit, which can lead to fire or electric shock.
- Do not attempt to repair the appliance yourself. Always contact an authorized customer service centre.
- If any of the following conditions occur, unplug the appliance and send it to an authorized service centre for repair
 - The mains cable, power supply unit or plug for the power supply is damaged or worn;
 - Liquid has penetrated the appliance;
 - The device has been exposed to rain or water;
 - The device has been dropped or the housing has been damaged;
 - The function of the device has obviously changed;
- The appliance cannot be operated as described in the operating instructions.

EU responsible person

EU based economic operator ensuring the product complies with the required regulations.

ASSMANN Electronic GmbH
 Auf dem Schüffel 3
 Lüdenscheid, Germany
<https://www.assmann.com>
info@assmann.com