

DIGITUS® Top and base closing panel for patch bracket

DN-19-PB-TB-SW
EAN 4016032457008



Top or base closing panel for patch bracket with brushed cable entry, black (RAL 9005)

The Wall Mounting Patch Brackets for 483 mm (19") installations are used for open mountings of 483 mm (19") components. They are available in several height units and can be stacked to suit to your individual needs of space. The variable top or base chassis is easy to mount to your patch bracket and offers additional cable management possibilities due to an added brush.

- 1.1 - 1.5 strong sheet steel, powder coated

Attributes

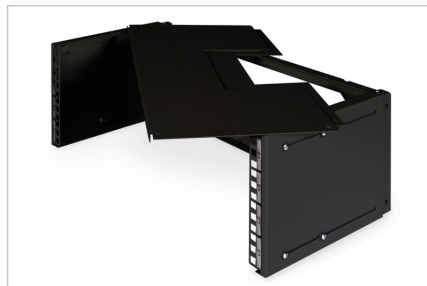
- Color: black, RAL 9005
- Mounted: no

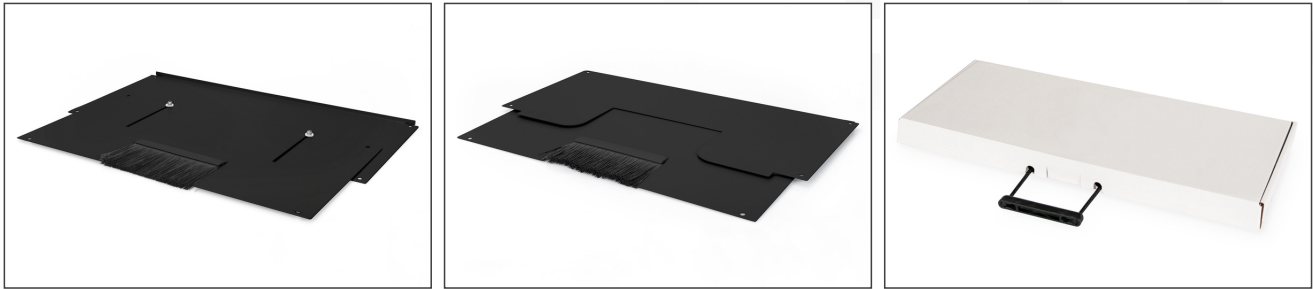
Package contents

- Top or base closing panel for patch brackets

Logistics						
	Number (pcs)	Weight (kg)	Depth (cm)	Width (cm)	Height (cm)	cm³
Packaging Unit Carton	6	11.00	19.00	53.00	27.00	27.19
Packaging Unit Inside	1	1.83	25.50	51.50	3.00	3,939.75
Packaging Unit Single	1	1.83	25.50	51.50	3.00	3,939.75
Net single without Packaging	0	1.30	24.50	50.50	1.00	1,237.25

More images:





Safety notes

- Ensure adequate ventilation to prevent the installed devices from overheating.
- Network cabinets should not be overfilled and the ventilation openings must not be blocked.
- Cables should be laid neatly and organized in cable ducts or trays.
- Use surge protection devices to protect sensitive devices from power surges or lightning strikes.
- Avoid moisture or wetness while observing the respective IP protection class.
- Ensure that the cabinet and the devices used are properly earthed.
- In regions with frequent thunderstorm activity, professional lightning protection should be integrated into the power supply.
- To avoid uneven loading, always mount the heaviest units at the bottom of the cabinet.
- Disconnect the installed devices from the power supply during maintenance or installation work.

EU responsible person

EU based economic operator ensuring the product complies with the required regulations.

ASSMANN Electronic GmbH
Auf dem Schüffel 3
Lüdenscheid, Germany
<https://www.assmann.com>
info@assmann.com