

DIGITUS® Active DisplayPort to HDMI Converter

AK-340415-002-S
EAN 4016032427476



DisplayPort Adapter Cable, Type DP - HDMI A M/F, 0.2m, w/lock, HDMI 2.0, act., gold, bl

The 4K DisplayPort to HDMI Converter (DisplayPort male to HDMI female) enables to reflect your contents from your computer or notebooks to your TV. It supports a resolution up to 4096 x 2160. So you can show your pictures, videos, documents, presentations, etc. in Ultra HD and use it optimal in meetings or in private areas.

HDMI 2.0 feature support

- Integrates a complete DisplayPort receiver and complete HDMI transmitter for video format conversation
- Integrated HDMI2.0 transmitter, up to supporting 4K x 2K@60Hz, 4K x 2K@30HZ and 1080P / 3D videos.
- Support DP++ Dual-Mode
- Supports DisplayPort 1.2 and 4 lanes at 1.62Gbps, 2.7Gbps and 5.4Gbps
- Full HDCP 1.4 / 2.2 content protection support.
- Deep Color 24bit
- Audio input formats: 8-ch LPCM, compressed audio (AC-3, DTS) and HBR audio format up to 24-bit audio sample size and 192 khz frame rate.

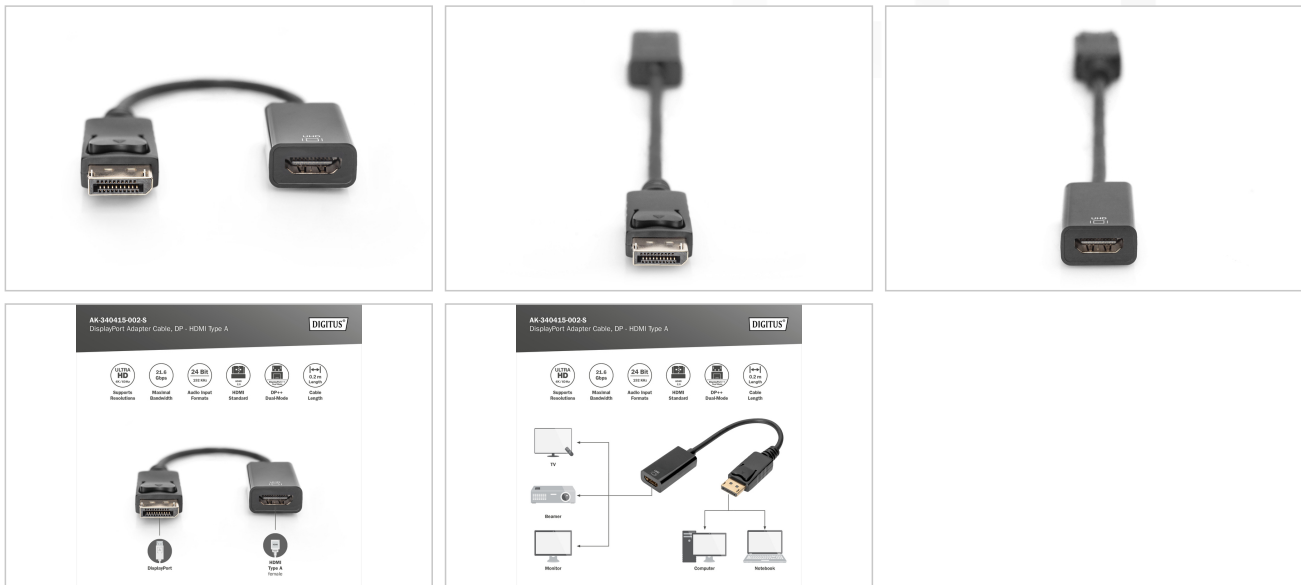
- Maximal bandwidth: 21,6 Gbps
- HBR-Version/transfer mode: HBR2 (5,40 Gbit/s per lane)

Attributes

- AWG: 32
- Color cable: black
- Color connector: black
- Connector 1: DP, plug
- Connector 2: HDMI type A, jack
- Connector 2: HDMI type A, jack
- Connector surface: nickel-plated
- DisplayPort standard: DisplayPort 1.2
- Ferrite filter: none
- HDTV Standard: Ultra HD 4K
- Hoods: molded
- Interlock: Snap fastener
- Wire material: CU
- Length: 0.2 m
- AOC - Active Optical Cable: no
- Shielding: Double shielding

Logistics						
	Number (pcs)	Weight (kg)	Depth (cm)	Width (cm)	Height (cm)	cm ³
Packaging Unit Carton	200	8.00	38.10	30.20	24.10	27,729.90
Packaging Unit Inside	1	0.03	33.00	27.90	7.60	6,997.32
Packaging Unit Single	1	0.04	20.00	15.00	1.52	456.00
Net single without Packaging	0	0.03	25.20	3.50	1.40	123.48

More images:



Safety notes

- When plugging and unplugging the cable, only grasp the plug and do not pull directly on the cable.
- Cables must not be kinked sharply or bent at tight angles, as this can damage the inner wires and lead to failures.
- Make sure that the cables are not under tensile load, as this can damage the insulation and the wires inside the cable.
- Ensure that cables are not laid in areas where they can be easily damaged mechanically.
- Cables should not be used in environments with extremely high or very low temperatures. Observe the product information on the maximum operating temperature of the cable
- Check cables regularly for visible damage such as cracks, kinks or signs of wear. Defective cables should be replaced immediately to avoid failures, short circuits or even electric shocks.

EU responsible person

EU based economic operator ensuring the product complies with the required regulations.

ASSMANN Electronic GmbH
 Auf dem Schüffel 3
 Lüdenscheid, Germany
<https://www.assmann.com>
info@assmann.com