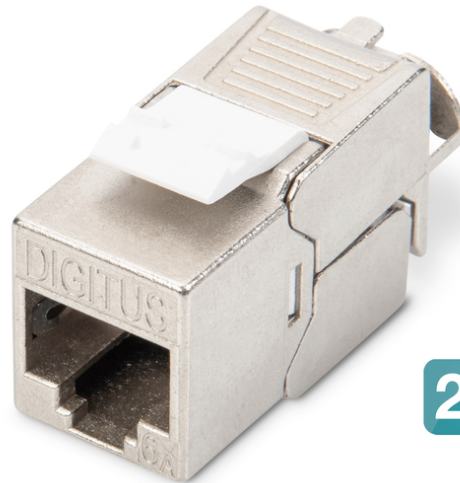


# DIGITUS® CAT 6A Keystone module, shielded, tool-free mounting connection

DN-93615-24

EAN 4016032373087



24 x

**CAT 6A Keystone Jack, shielded, Re-embedded tool free connec., set 24 pcs**

The shielded CAT 6A Keystone module set DN-93615-24 from DIGITUS® impresses with future-oriented standards and high-end quality for your network. The compact design allows 24 modules to be installed in series in a 483 mm (19") 1U panel. The tool-free installation is carried out via LSA strips, color-coded according to EIA/TIA 568 A&B. Thanks to its compact design, the module also fits into design-compatible modular junction boxes.

**Quick and easy installation without special tools**

- Category 6A 10GBase-T, 500 MHz
- ISO/IEC 11801 3rd Edition, EN 50173-1
- Suitable for IEEE 802.3 af/at/bt - PoE, PoE+ (4PPoE in permanent link)
- Suitable for distribution panel and junction box installation
- RJ45 socket, 8P8C
- Cable installation via insulation displacement connectors, color-coded according to EIA/TIA 568 A & B
- Strain relief and cable fixing using intelligent cable manager
- Tool-free mounting connection
- 360° shield contacting
- Housing material: Zinc die-cast - nickel-plated
- Contact material: Phosphor bronze

- Coating Contacts: Nickel, gold-plated 0.5 μ
- Insertion force: Max. 30N (according to IEC 60603-7-51)
- Holding force: 7.7 kg between socket and plug
- Operating temperature: -20 °C up to +70 °C (ISO/IEC 11801, ANSI/TIA 568 C.2)
- Mating cycles: 750 (ISO/IEC 11801, IEC 60603-7-51)
- In accordance with IEC 60512-5, IEC 60512-6-5
- Copper conductor diameter: AWG (26/7 - 22/1), stranded and solid wire
- Tested with AWG 22/1 solid installation cable
- (DIGITUS® DK-T74X-A-VH-X; AWG 22/1 Cat.7A installation cable)
- Dielectric strength: 1000 VDC (contact/contact), 1500 VDC (contact/ground)
- Tool-free installation using LSA insulation displacement connectors, color-coded in accordance with EIA/TIA 568 A & B
- Intelligent cable manager (reclosable)
- CAT 6A Keystone module, shielded, set= 24 pieces
- Dimensions (HxWxD): 21.0 x 14.5 x 34.5 mm
- Weight: 19.5 g

**Attributes**

- Weight: 22 g
- Category: CAT 6A

| Logistics                    |              |             |            |            |             |        |
|------------------------------|--------------|-------------|------------|------------|-------------|--------|
|                              | Number (pcs) | Weight (kg) | Depth (cm) | Width (cm) | Height (cm) | cm³    |
| Packaging Unit Carton        | 36           | 22.50       | 53.00      | 32.00      | 22.00       | 37.31  |
| Packaging Unit Inside        | 1            | 0.63        | 7.50       | 16.00      | 6.50        | 780.00 |
| Packaging Unit Single        | 1            | 0.63        | 7.50       | 16.00      | 6.50        | 780.00 |
| Net single without Packaging | 0            | 0.00        | 0.00       | 0.00       | 0.00        | 0.00   |

More images:

