

# DIGITUS L-Support Sliding Rails for 483 mm (19") Server Cabinets

DN-19-GS-SRV  
EAN 4016032366461



**Slide rails, L shape, for 800-1000 mm depth racks adjustable 500-750 mm depth, set with 2 pieces**

The L-Support Slide Rails help you to support the installation of heavy duty components in DIGITUS® 483 mm (19") network- or server cabinets. They are getting fixed on the four 483 mm (19") profile rails. With galvanized steel sheet and a load capacity of up to 100 kg, they offer a perfect solution.

- for fixed installation on the four 483 mm (19") profile rails
- galvanized steel sheet with a strength of 2.00 mm
- Loading capacity: 100 kg

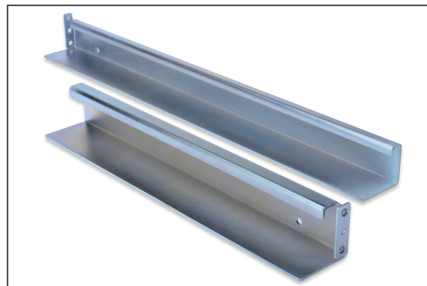
- 1 piece consists of two parts (internal and external profiling system)
- 1 set= 2 pieces
- Variable in depth: 500 mm to 750 mm
- incl. fixing material

**Package contents**

- L support rail set (two rails - for left and right side of 19" profile rails)
- Fixing material

Logistics						
	Number (pcs)	Weight (kg)	Depth (cm)	Width (cm)	Height (cm)	cm <sup>3</sup>
Packaging Unit Carton	4	6.40	21.00	53.00	19.50	21,703.50
Packaging Unit Inside	1	2.86	53.50	6.00	8.00	2.57
Packaging Unit Single	1	2.86	53.50	6.00	8.00	2.57
Net single without Packaging	0	0.00	60.00	5.00	4.40	1.32

**More images:**



**Safety notes**

- When installing and using the accessory product for network cabinets, observe the respective safety instructions of the manufacturer or the cabinet system in which you want to use the accessory.

**EU responsible person**

EU based economic operator ensuring the product complies with the required regulations.

ASSMANN Electronic GmbH  
Auf dem Schüffel 3  
Lüdenscheid, Germany  
<https://www.assmann.com>  
[info@assmann.com](mailto:info@assmann.com)