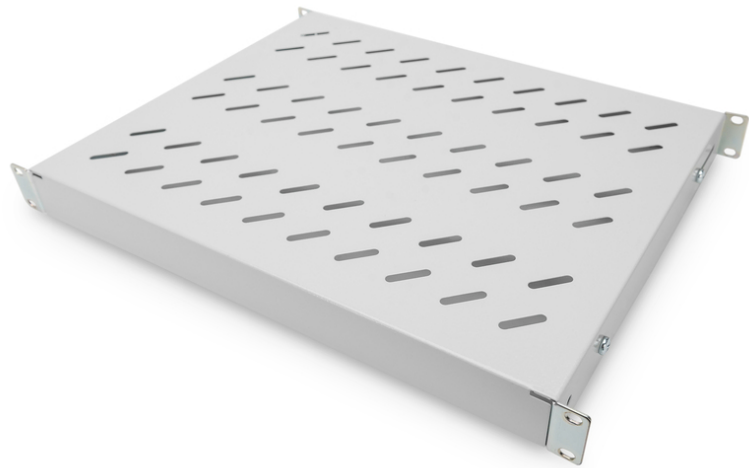


DIGITUS® Shelf with Variable Rails for Fixed Mounting in 483 mm (19") Cabinets

DN-97644

EAN 4016032364962



1U fixed shelf for 600 mm depth racks 44x483x358 mm, adjust. 350-550 mm depth, grey

The shelves for fixed mounting can be installed easy on the four 483 mm (19") profile rails of your 483 mm (19") network- or server cabinet. Due to their stable, perforated steel sheet with a load capacity of 50 kg, they are the optimal surface for components which are not 483 mm (19") suitable. The fixing rails are can be adjusted if needed.

- for fixed mounting on the four 483 mm (19") profile rails
- sturdy, perforated steel sheet
- incl. fixing material, M6
- 4-point fixing (front- and rear 19" profile rails)

Attributes

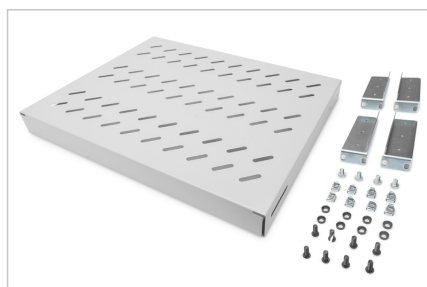
- Color: light grey, RAL 7035
- Load capacity: 50 kg
- Mounting type: Adjustable mounting rails
- Units: 1
- Weight: 2.38 kg
- Inch form factor (IEC 60297): 482.6 mm (19")
- Suitable cabinet depth: 600 mm

Package contents

- Installation set (screws, cage nuts, washers)

Logistics						
	Number (pcs)	Weight (kg)	Depth (cm)	Width (cm)	Height (cm)	cm ³
Packaging Unit Carton	48	115.20	59.50	50.00	46.60	138.64
Packaging Unit Inside	1	2.53	37.50	50.00	5.50	10,312.50
Packaging Unit Single	1	2.53	37.50	50.00	5.50	10,312.50
Net single without Packaging	0	2.38	34.70	48.20	4.40	7,359.18

More images:





Safety notes

- When installing and using the accessory product for network cabinets, observe the respective safety instructions of the manufacturer or the cabinet system in which you want to use the accessory.

EU responsible person

EU based economic operator ensuring the product complies with the required regulations.

ASSMANN Electronic GmbH
Auf dem Schüffel 3
Lüdenscheid, Germany
<https://www.assmann.com>
info@assmann.com