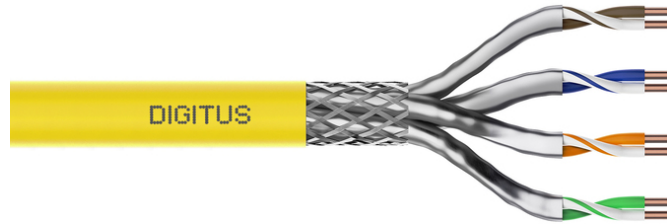


# DIGITUS® CAT 7A S/FTP, data cable - installation cable, 500 m, simplex, Dca-s1a d1 a1 , GHMT PVP certified

DK-1743-A-VH-5

EAN 4016032363842



### CAT 7A S-FTP installation cable, 1500 MHz, Dca AWG 22/1, 500 m drum, Sx, yellow

The Digitus Cat 7 installation cable is designed for use in structured data centers and building cabling in accordance with ISO/IEC 11801, DIN EN 50288-4-1, DIN EN 50173, IEC 61156-7, EN 50288-9-1. The cable is ideal for the transmission of analog and digital data and supports PoE, PoE+, 4PPoE (IEEE 802.3af, 3at, 3bt). The shield structure consists of individually shielded pairs with a tinned copper braid, which ensures excellent shielding and electrical values

#### Future-oriented standards and high-end quality for your network.

- Physical properties:
- Conductor: Bare copper wire, AWG 22/1
- System(s) for the assessment and verification of constancy of performance: System 3
- Insulation: SFS-PE (foamed polyethylene jacket)
- Total number of insulated conductors: 8, twisted into 4 pairs
- Color code: Blue-white, orange-white, green-white, brown-white
- Shielding of the individual pairs: aluminum-laminated polyester film, covers 100%
- Overall shielding: tinned copper braiding
- Outer sheath: Dca to Cca in accordance with EN 50575; LSZH
- Outer sheath thickness (nominal): 0.60 mm (Dca); 0.60 mm (Cca)
- Outer sheath color: Yellow (RAL 1016)
- Mechanical properties:
- Strain relief: 150 N max.
- Dynamic bending radius: 8x AD mm min.
- Static bending radius: 4x AD mm min.
- Transport and storage temperature range: -20 °C to +60 °C

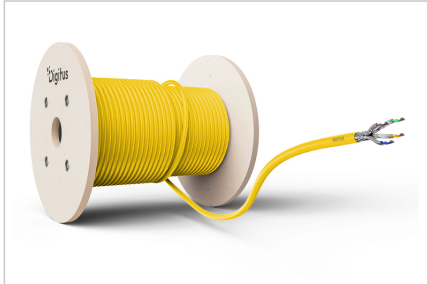
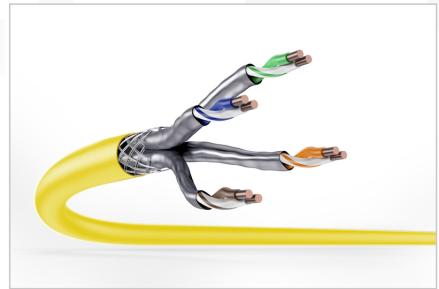
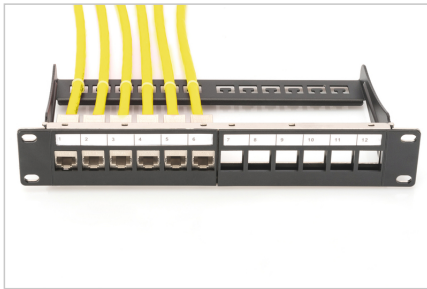
- Operating temperature range: -20 °C to +60 °C
- Installation temperature range: 0 °C to +50 °C
- Outer diameter (nominal): 7.8 mm (Dca); 7.8 mm (Cca)
- Weight (kg/km): 65 kg (Dca); 65 kg (Cca)
- Electrical properties:
- Impedance: 100±5 Ohm @ 1-1000 MHz
- Capacitance: 40 pF/m nominal @ 1 KHz
- Capacitance unbalance (pair-earth): 1.6 pF/m max. @ 1 KHz
- Insulation resistance: 5 GOhm x km min.
- Loop resistance: 147 Ohm/Km max. (2% max. unbalanced resistance)
- Operating voltage: 72 Vdc max.
- Coupling attenuation: CA-Type 1b
- Phase delay: 450 nS/100 m max.
- Time delay: 10 nS/100 m max.
- Separation class: "d" according to EN 50174-2
- NVP: 79%
- Flame spread: EN 60332-1-2 (LSOH-PVC)
- Halogen-free, corrosiveness: EN 60754-1/2 (LSOH)
- Smoke density: EN 61034-2

#### Attributes

- Assortment: Twisted Pair Installation Cables
- Category: CAT 7A
- Shielding: S-FTP, pairs in metal foil and braid shielding
- CPR: Dca
- Length: 500 m
- Color: yellow
- Jacket: LSOH
- Structure: 4 x 2 AWG 22/1, solid twisted pair

Logistics						
	Number (pcs)	Weight (kg)	Depth (cm)	Width (cm)	Height (cm)	cm <sup>3</sup>
Packaging Unit Carton	8	255.60	53.00	53.00	43.50	122,192.00
Packaging Unit Inside	1	33.50	53.00	53.00	43.50	122,192.00
Packaging Unit Single	1	33.50	53.00	53.00	43.50	122,192.00
Net single without Packaging	0	34.00	0.00	0.00	0.00	0.00

More images:



**DIGITUS**

1500 MHz (Frequency)  
10 Gbit Ethernet  
CAT 7a 1000 Mbps

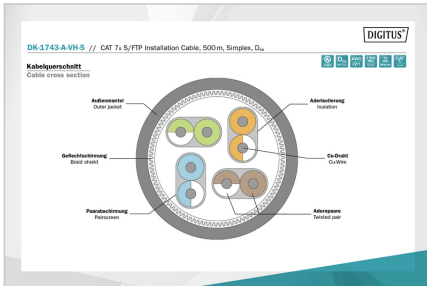
AWG 22/1  
LSZH  
Dca  
CFR class

**CAT 7A S/FTP Installation Cable, 500 m, Simplex, D<sub>ca</sub>**

**DIGITUS**

DK-1743-A-VH-S // CAT 7a S/FTP Installation Cable, 500 m, Simplex, D<sub>ca</sub>

Anwendungsbeispiel  
Example of use



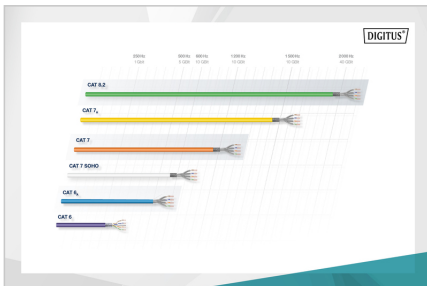
**DIGITUS**

Produktdaten Product Information	Physikalische Spezifikationen Physical Properties
<b>Bezeichnung:</b> CAT 7a S/FTP Installation Cable, 500 m, Simplex, D <sub>ca</sub> <b>Part Number:</b> DK-1743-A-VH-S <b>Hersteller:</b> ASSMANN Electronic GmbH <b>Produktionsland:</b> China <b>Material:</b> PVC, LSZH, Dca, CFR class	<b>Typ:</b> CAT 7a S/FTP Installation Cable, 500 m, Simplex, D <sub>ca</sub> <b>Standard:</b> CAT 7a S/FTP Installation Cable, 500 m, Simplex, D <sub>ca</sub> <b>Material:</b> PVC, LSZH, Dca, CFR class
<b>Technische Eigenschaften Technical Properties</b> <b>Leistungsfähigkeit Performance:</b> 10 Gbit Ethernet <b>Bandbreite Bandwidth:</b> 10 Gbit Ethernet <b>Übertragungsraten Data Rates:</b> 10 Gbit Ethernet <b>Übertragungsdistanz Transmission Distance:</b> 100 m	<b>Leistungsfähigkeit Performance:</b> 10 Gbit Ethernet <b>Bandbreite Bandwidth:</b> 10 Gbit Ethernet <b>Übertragungsraten Data Rates:</b> 10 Gbit Ethernet <b>Übertragungsdistanz Transmission Distance:</b> 100 m

**DIGITUS**

Leistungseigenschaften Transmission Properties

FRQ	ATT	NEXT	PSNEXT	ACR	PSACR	RL	ELFEXT	PS ELFEXT
100	26	40	28	26	26	26	26	26
1	11	15	10	10	10	10	10	10
10	12	16	11	11	11	11	11	11
100	13	17	12	12	12	12	12	12
1000	14	18	13	13	13	13	13	13
10000	15	19	14	14	14	14	14	14
100000	16	20	15	15	15	15	15	15
1000000	17	21	16	16	16	16	16	16
10000000	18	22	17	17	17	17	17	17
100000000	19	23	18	18	18	18	18	18
1000000000	20	24	19	19	19	19	19	19



**Safety notes**

- Data cables must not be bent, stretched or twisted excessively. Sharp bends can damage the cable sheath and lead to failures or short circuits.
- Installation only by trained specialists.
- Installation only in dry rooms.
- The data cable must not be in direct contact with other electrical cables or high-voltage sources in order to avoid electromagnetic interference.

**EU responsible person**

EU based economic operator ensuring the product complies with the required regulations.

ASSMANN Electronic GmbH  
 Auf dem Schüffel 3  
 Lüdenscheid, Germany  
<https://www.assmann.com>  
[info@assmann.com](mailto:info@assmann.com)