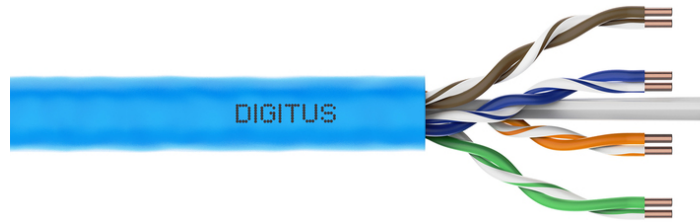


DIGITUS® CAT 6A U/UTP installation cable, 500 m, simplex, Eca

DK-1613-A-VH-5

EAN 4016032344209



CAT 6A U-UTP installation cable, 500 MHz Eca (EN 50575), AWG 23/1, 500 m drum, sx, blue

The Digitus Cat 6A U/UTP installation cable is designed for use in the structured data center and the building cabling according to ISO/IEC 11801, DIN EN 50288-11-1, DIN EN 50173, IEC 60332-1. The cable is perfectly suitable for the transmission of both analog and digital data and also supports POE and POE+.

Future-oriented standards and high-end quality for your network.

- Physical properties:
- Conductor: Bare annealed copper, solid AWG 23/1
- Insulation: HD-PE (High Density Polyethylene)
- Total number of insulated conductors: 8, twisted in 4 pairs
- Color code: Blue-white, orange-white, green-white, brown-white
- Individual pair shield: None
- Overall shielding: None
- Outer sheath: Eca to B2ca acc. to EN 50575; LSZH
- Outer sheath diameter (nominal): 0,5 mm (Eca); 0,6 mm (Dca); 1,2 mm (Cca); 1,4 mm (B2ca)
- Outer sheath color: Light blue (RAL 5012)
- Mechanical properties:
- Tensile loading: 150N max.
- Dynamic bending radius: 8x AD mm min.
- Static bending radius: 4x AD mm min.
- Shipping- and storage temperature range: -20 °C up to +60 °C
- Operating temperature range: -20 °C up to +75 °C

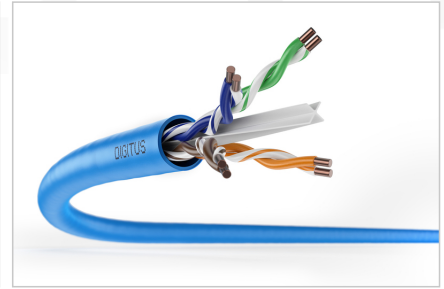
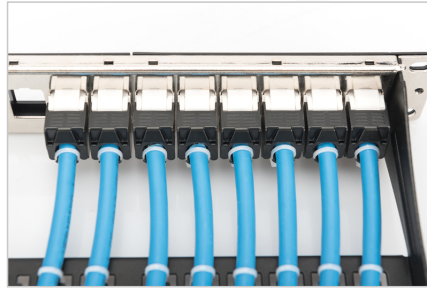
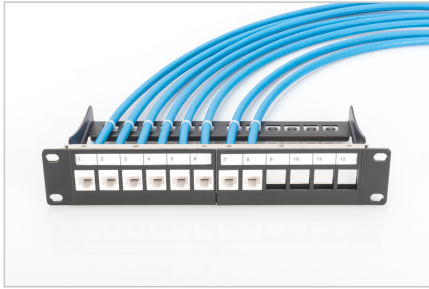
- Installation temperature range: 0 °C up to +50 °C
- Overall diameter Simplex (nominal): 7,1 mm (Eca); 7,3 mm (Dca); 7,4 mm (Cca); 7,6 mm (B2ca)
- Weight (kg/km): 53 kg (Eca); 54 kg (Dca); 55 kg (Cca); 56 kg (B2ca)
- Electrical properties:
- Impedance: 100±50Ω @ 1 - 600MHz
- Capacitance: 40 pF/m nominal @ 1 KHz
- Capacitance unbalance (pair-ground): 1.6 pF/m max. @ 1 KHz
- Insulation resistance: 5 GΩm x km min.
- DC loop resistance: 147 Ω/km max. (2% max. resistance unbalance)
- Voltage resistance: 72 Vdc max.
- Coupling attenuation: CA-Type 2
- Signal propagation delay: 450 nS/100 m max.
- Propagation delay: 10 nS/100 m max.
- Separating class: "c" acc. to EN 50174-2
- NVP: 70%

Attributes

- Assortment: Twisted Pair Installation Cables
- Category: CAT 6A
- Shielding: U-UTP, unshielded
- CPR: Eca
- Length: 500 m
- Color: light-blue
- Jacket: LSOH
- Structure: 4 x 2 AWG 23/1, solid twisted pair

Logistics						
	Number (pcs)	Weight (kg)	Depth (cm)	Width (cm)	Height (cm)	cm³
Packaging Unit Carton	16	440.00	50.00	50.00	22.00	55.00
Packaging Unit Inside	1	27.50	50.00	50.00	22.00	55.00
Packaging Unit Single	1	27.50	50.00	50.00	22.00	55.00
Net single without Packaging	0	0.00	0.00	0.00	0.00	0.00

More images:



DIGITUS

AWG 23/1
500 MHz
10 Gbit Ethernet
CAT 6a
Eca class
LSZH
207/75°

CAT 6a U/UTP Installation Cable, 500m, Simplex, Eca

DIGITUS

DK-1613-A-VH-S // CAT 6a U/UTP Installation Cable, 500m, Simplex, Eca

Anwendungsbeispiel
Example of use

DIGITUS

DK-1613-A-VH-S // CAT 6a U/UTP Installation Cable, 500m, Simplex, Eca

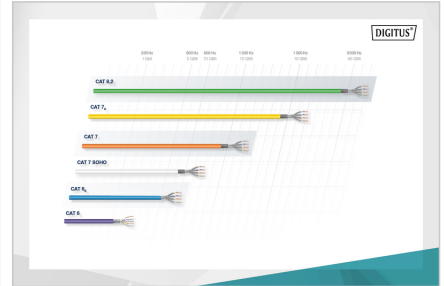
Kabelquerschnitt
Cable cross section

DIGITUS

Produktdaten / Product Information	Physikalische Spezifikationen / Physical Properties
Bestandteile / Components Kabel / Cable Kabel / Cable Kabel / Cable	Material Kabel / Cable Kabel / Cable Kabel / Cable
Technische Eigenschaften / Technical Properties Kategorie / Category Kategorie / Category Kategorie / Category	Mechanische Eigenschaften / Mechanical Properties Kategorie / Category Kategorie / Category Kategorie / Category

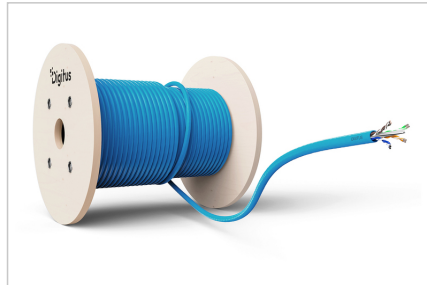
DIGITUS

Leistungsebenen / Power Levels	PS NEXT	ACR	PS crosstalk	AL	SLPWR	PS EMI
100	45	45	45	45	45	45
10	37	37	37	37	37	37
1	31	31	31	31	31	31
0.1	27	27	27	27	27	27
0.01	24	24	24	24	24	24
0.001	21	21	21	21	21	21
0.0001	18	18	18	18	18	18
0.00001	15	15	15	15	15	15



DIGITUS

UVP Konformität / UVP Compliance	Bestandteile / Components	Leistungsebenen / Power Levels	Adaptieren der konfigurierbaren Werte / Adaptation of configurable values	Zusatzfunktionen / Additional functions
B2ca	Stahl hoch / High steel	1+	• Spannungsbügel / Voltage bracket • Abschirmung / Shielding • Abschirmung / Shielding • Abschirmung / Shielding	s • Abschirmung / Shielding • Abschirmung / Shielding • Abschirmung / Shielding
Cca	Holz / Wood	3	• Spannungsbügel / Voltage bracket • Abschirmung / Shielding • Abschirmung / Shielding	d • Abschirmung / Shielding • Abschirmung / Shielding • Abschirmung / Shielding
Dca	Metall / Metal	3	• Spannungsbügel / Voltage bracket • Abschirmung / Shielding • Abschirmung / Shielding	a • Abschirmung / Shielding • Abschirmung / Shielding • Abschirmung / Shielding
Eca	Gewinn / Profit	3	• Spannungsbügel / Voltage bracket • Abschirmung / Shielding • Abschirmung / Shielding	a • Abschirmung / Shielding • Abschirmung / Shielding • Abschirmung / Shielding



Safety notes

- Data cables must not be bent, stretched or twisted excessively. Sharp bends can damage the cable sheath and lead to failures or short circuits.
- Installation only by trained specialists.
- Installation only in dry rooms.
- The data cable must not be in direct contact with other electrical cables or high-voltage sources in order to avoid electromagnetic interference.

EU responsible person

EU based economic operator ensuring the product complies with the required regulations.

ASSMANN Electronic GmbH
Auf dem Schüffel 3
Lüdenscheid, Germany
<https://www.assmann.com>
info@assmann.com