

DIGITUS CAT 6A, Class EA High Density Patch Panel, shielded

DN-91624S-SL-EA
EAN 4016032341369



CAT 6A Class EA patch panel, shielded, 0.5U 24-port RJ45, incl. dust cover, 8P8C, black

The DIGITUS® 24-port patch panel offers a very high packing density with only 0.5 U. This means that up to 48 ports can be implemented on 1 U with two 0.5 U panels. The patch panel is shielded and equipped with dust protection caps on the RJ45 sockets. The 360° shield contact of the cables ensures the best performance characteristics. The installation cables can be securely fixed with the integrated cable clamps. The quick-release fastener on the housing ensures easy and tool-free access to the LSA insulation displacement connectors.

Very space-saving (only 0.5U) - With dust protection caps - Future-oriented standards and high-end quality for your network

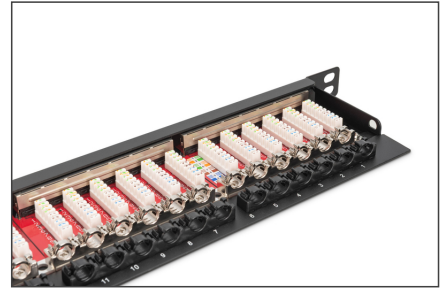
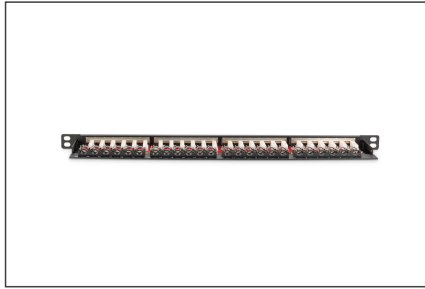
- Transmission characteristics: Category 6A, Class EA
- Application areas: Up to 500 MHz, 10GBase-T
- Standards: ISO/IEC 11801 2nd Ed., EN 50173-1, EIA/TIA 568-C, 802.3af, 802.3at PoE+
- General properties:
- Suitable for 483 mm (19") rack mounting
- RJ45 sockets, 8P8C
- Cable installation via LSA strips, color-coded according to EIA/TIA 568 A & B
- Cable fixing by means of quick latches
- Central earthing connection
- 360° shield contacting
- Integrated dust protection flap
- Mechanical properties:

- Housing material: 1.5 mm galvanized, cold-rolled steel according to EN1.4301, UNS S30400, AISI 304 and LMSAD110
- RJ45 socket material: ABS UL 94V-0
- Contact RJ45 socket: Nickel-plated phosphor bronze, 0.5 µ gold-plated contact
- RJ-45 shielding: Nickel-plated bronze
- LSA cutting clamp: Krone LSA+, UL 94V-2, galvanized phosphor bronze
- Earthing wire: Not included in the scope of delivery
- Printed circuit board: FR4, UL 94V-0
- Physical properties:
- Insertion force: 30N max. (IEC 60603-7-5)
- Tensile load: 7.7 kg between socket and plug
- Operating temperature: -20° C to +70 °C (ISO/IEC 11801, EN 50173-1, ANSI/TIA/EIA 568 C)
- Socket mating cycle: > 750 acc. to ISO/IEC 11801, IEC 60603-7-5
- Terminal: > 200 acc. to ISO/IEC 11801, IEC 60603-7-5
- Core receptacle: 22-26 AWG solid and stranded conductors
- Insulation resistance: > 500 MOhm
- Contact resistance: < 20 milliOhms
- Dielectric strength: 1000 VDC (contact/contact), 1500 VDC (contact/ground)
- HE: 0.5

Attributes

- Color: black, RAL 9005
- Ports: 24
- Units: 0
- Category: CAT 6A

Logistics						
	Number (pcs)	Weight (kg)	Depth (cm)	Width (cm)	Height (cm)	cm³
Packaging Unit Carton	6	9.00	54.50	30.00	12.00	19.62
Packaging Unit Inside	1	1.50	53.00	14.00	3.50	2.60
Packaging Unit Single	1	1.50	53.00	14.00	3.50	2.60
Net single without Packaging	0	0.00	0.00	0.00	0.00	0.00

More images:**Safety notes**

- Protect product from moisture
- Avoid antistatic charging when installing the product
- Observe the specifications of the raw cable manufacturer during installation

EU responsible person

EU based economic operator ensuring the product complies with the required regulations.

ASSMANN Electronic GmbH
Auf dem Schüffel 3
Lüdenscheid, Germany
<https://www.assmann.com>
info@assmann.com