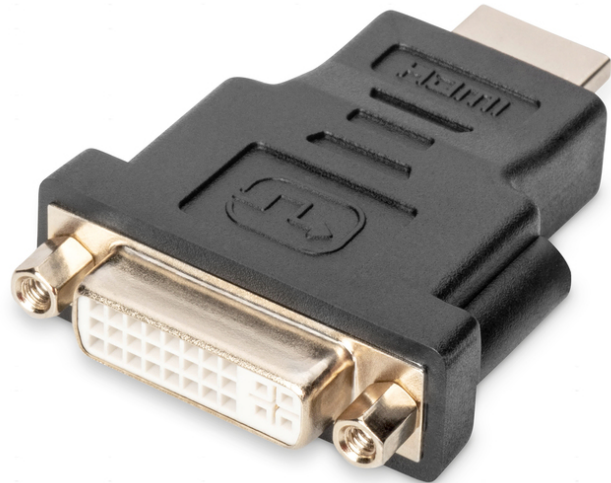


# DIGITUS® HDMI Adapter

AK-330505-000-S  
EAN 4016032296195



### HDMI Adapter, Type A-DVI-I(24+5) M/F, Full HD, bl

This adapter is suitable to connect a HDMI cable type A to device or cables with DVI-I connector, for example .

#### Full HD, Dual-Link

- Support up to 1080p with 60Hz

#### Attributes

- Assortment: HDMI Cables
- Cable type: Dual-Link
- Color cable: black
- Color connector: black

- Connector 1: HDMI type A, plug
- Connector 2: DVI-I, (24+5), jack
- Connector surface: nickel-plated
- Ferrite filter: none
- HDMI Standard: Standard HDMI with Ethernet
- HDTV Standard: Full HD
- Hoods: molded
- Packaging: Polybag
- Resolution max.: 1920 x 1200 Pixel, 60Hz
- Length: 0.06 m
- AOC - Active Optical Cable: no
- Shielding: single shielding

Logistics						
	Number (pcs)	Weight (kg)	Depth (cm)	Width (cm)	Height (cm)	cm³
Packaging Unit Carton	150	4.50	32.00	30.00	22.00	21.12
Packaging Unit Inside	1	0.03	16.00	16.00	4.00	1.02
Packaging Unit Single	1	0.08	11.00	7.00	1.50	115.50
Net single without Packaging	0	0.03	5.80	4.00	1.50	34.80

**More images:**



**Safety notes**

- When plugging and unplugging the cable, only grasp the plug and do not pull directly on the cable.
- Cables must not be kinked sharply or bent at tight angles, as this can damage the inner wires and lead to failures.
- Make sure that the cables are not under tensile load, as this can damage the insulation and the wires inside the cable.
- Ensure that cables are not laid in areas where they can be easily damaged mechanically.
- Cables should not be used in environments with extremely high or very low temperatures. Observe the product information on the maximum operating temperature of the cable
- Check cables regularly for visible damage such as cracks, kinks or signs of wear. Defective cables should be replaced immediately to avoid failures, short circuits or even electric shocks.

**EU responsible person**

EU based economic operator ensuring the product complies with the required regulations.

ASSMANN Electronic GmbH  
 Auf dem Schüffel 3  
 Lüdenscheid, Germany  
<https://www.assmann.com>  
[info@assmann.com](mailto:info@assmann.com)