

# Ubiquiti USW-24-POE - 24-Port 802.3at PoE Gigabit Switch with SFP

**UB-USW-24-POE**  
**EAN 0817882028554**



Expand and power your network with the UniFi(R) PoE Switch, part of the Ubiquiti(R) UniFi Enterprise System. It is available in two models: USW-16-POE: 16 RJ45 ports with 2 SFP ports USW-24-POE: 24 RJ45 ports with 2 SFP ports Compact Form Factor Measuring only 7.9" in depth, the UniFi PoE Switch is designed for convenient installation: rackmounted in a SOHO rack cabinet placed on a desktop Fiber Connectivity: SFP ports enable network uplinks of up to 1 Gbps. Fanless, Silent Cooling: The UniFi PoE Switch features fanless, silent thermal cooling, so it can be located in any workspace. Switching Performance: The UniFi PoE Switch offers the forwarding capacity to simultaneously process traffic on all ports at line rate without any packet loss. 802.3af/at PoE: PoE support simplifies your network infrastructure and cabling. PoE ports offer 802.3af/at to power your PoE devices, such as UniFi APs and cameras.

- Dimensions: 442.4 x 200 x 43.7 mm (17.42 x 7.87 x 1.72")
- Weight: 3.00 kg (6.61 lb); With brackets: 3.09 kg (6.81 lb)
- Interfaces: Networking: (24) 10/100/1000 RJ45 ports, (2) 1G SFP Ethernet ports; Management: Ethernet in-band
- Total non-blocking throughput: 26 Gbps
- Switching capacity: 52 Gbps
- Forwarding rate: 38.69 Mpps
- Power method: 100-240 V AC, 50/60 Hz, universal input

- Power supply: AC/DC, internal, 120 W
- Voltage range: 100 to 240 V AC
- Max. power consumption (excluding PoE output): 25 W
- LEDs: System: Status; RJ45 data ports: PoE, speed/link/activity; SFP data ports: Link/activity
- ESD/EMP protection: Air: +/-16 kV, contact: +/-12 kV
- Shock and vibration: ETSI300-019-1.4 Standard
- Operating temperature -5°C to 40°C (23°F to 104°F)
- Operating humidity: 10 - 90% non-condensing
- Certifications: CE, FCC, IC
- Total available PoE: 95 W
- PoE interfaces ports 1-6: PoE+ IEEE 802.3af/at (pins 1, 2+; 3, 6-)
- Max. PoE wattage per
- Port by PSE (802.3at): 32 W
- Voltage range: 802.3af mode: 44-57 V; 802.3at mode: 50-57 V

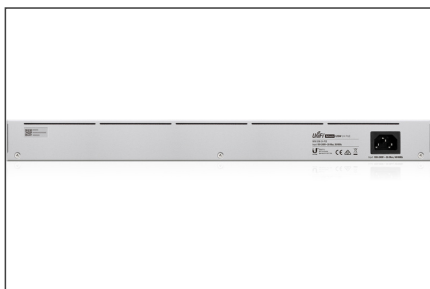
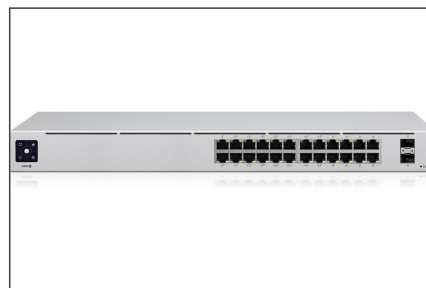
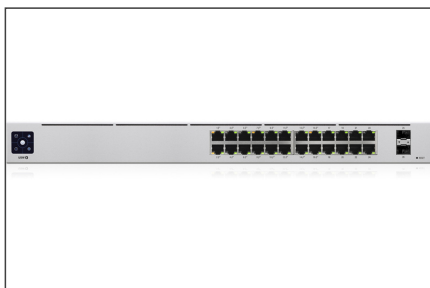
#### Attributes

- Industrial usage: no
- Managed: yes
- Outdoorsuitable: no
- PoE (Power over Ethernet): yes
- Protection against vandalism: no
- VLAN: no

Logistics						
	Number (pcs)	Weight (kg)	Depth (cm)	Width (cm)	Height (cm)	cm³
Packaging Unit Carton	2	6.48	0.00	0.00	0.00	0.00
Packaging Unit Inside	1	3.24	0.00	0.00	0.00	0.00
Packaging Unit Single	1	3.24	0.00	0.00	0.00	0.00
Net single without Packaging	0	0.00	0.00	0.00	0.00	0.00

---

**More images:**



**EU responsible person**

EU based economic operator ensuring the product complies with the required regulations.

Discomp s.r.o  
Dopravni 1218/2a  
Plzen, Czech Republic  
<https://www.discomp.cz/>  
[info@discomp.cz](mailto:info@discomp.cz)