

# Digitus® M.2 NVMe + M.2 SATA SSD docking station with SD Express card reader, USB-C™

DA-71546-1

EAN 4016032501398



## Dual Bay Nvme+SATA 2-in-1 SSD Docking Station 2 bay SATA/NVME 2-in-1 Docking Station

The 3-in-1 docking station from DIGITUS® can accommodate M.2 SSDs in NVMe or SATA technology, and there is also an SD Express 7.1 card reader with the highest data transfer rates on board. Manage M.2 data carriers with up to 4 TB per slot and additional SD cards up to 2 TB. NVMe SSDs with B+M key & M key as well as SATA SSDs with B+M key, each in the formats 2242, 2260, 2280 & 22110 are supported. Easily expand the storage capacity of numerous USB-C™ devices such as PCs, notebooks, TVs, game consoles or routers.

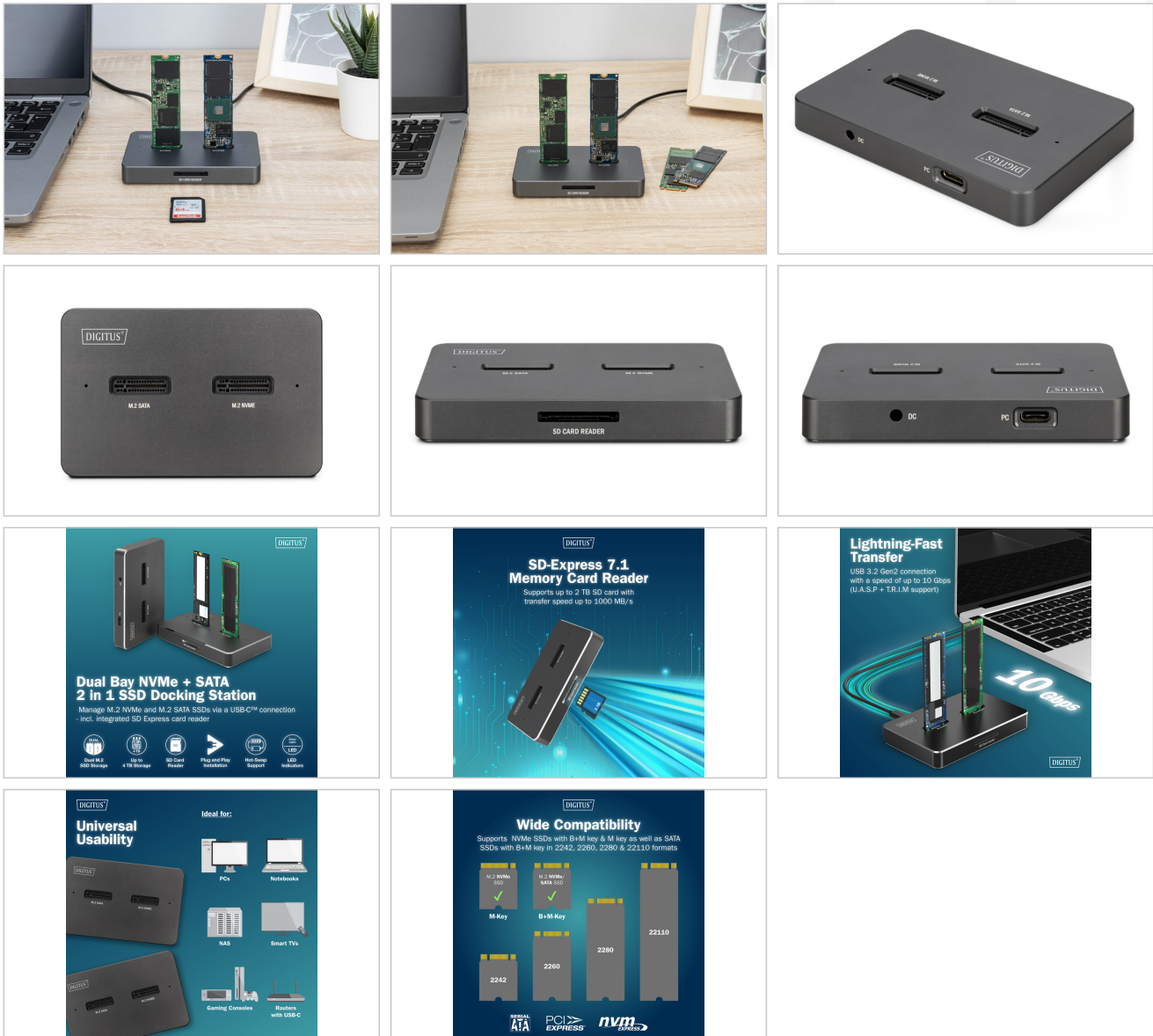
### Manage M.2 NVMe and M.2 SATA SSDs via a USB-C™ connection - incl. integrated SD Express card reader

- 1 x M.2 bay for NVMe SSDs (B+M-Key / M-Key) 1 x M.2 bay for SATA SSDs (B+M-Key)

- Capacity: max. 4 TB per bay
- 1 x SD-Express 7.1 memory card reader 2 TB max. / 1000 MB/s max.
- Supported formats: 2242, 2260, 2280 & 22110
- USB-C™ connections: 1 x data USB-C™ 3.2 Gen2, 1 x
- Power supply USB-C™ socket
- Downwards compatible with USB 3.0 / USB 2.0
- Maximum transfer rate USB-C™: 10 Gbps
- Supports U.A.S.P. and T.R.I.M.
- Supports hot swap (insertion and ejection during operation)
- LED indicators for hard disk transfer (white), SD transfer (blue) & power (green)
- Areas of application: PC, notebook, TV, router or game consoles (with USB-C™ connection)
- Storage formats: NTFS, FAT, FAT32 Input voltage USB power supply: 100 -240 V AC, 50/60 Hz,

| Logistics                    |              |             |            |            |             |           |
|------------------------------|--------------|-------------|------------|------------|-------------|-----------|
|                              | Number (pcs) | Weight (kg) | Depth (cm) | Width (cm) | Height (cm) | cm³       |
| Packaging Unit Carton        | 20           | 7.00        | 32.50      | 35.50      | 24.00       | 27,690.00 |
| Packaging Unit Inside        | 1            | 0.35        | 0.00       | 0.00       | 0.00        | 0.00      |
| Packaging Unit Single        | 1            | 0.35        | 10.60      | 15.00      | 7.00        | 1,113.00  |
| Net single without Packaging | 1            | 0.12        | 6.60       | 10.20      | 1.50        | 0.00      |

## More images:



## Safety notes

- Overloading can lead to overheating and damage to the appliance or the connected peripherals.
- If necessary, use an external power supply to ensure stable performance.
- If devices such as external hard disks or printers that require a high power consumption are connected, the device should be used with an external power supply. Otherwise, the device could be overloaded or functional problems could occur.
- Do not expose the device to rain, moisture, vapors or liquids.
- Do not insert any objects into the device.
- Do not attempt to repair the unit or open the housing without authorization. You risk an electric shock!
- Ensure adequate ventilation to prevent damage due to overheating.
- Dust, moisture, vapors and strong cleaning agents or solvents can cause damage to the device.
- Disconnect the appliance from the power supply and the connected devices before cleaning.
- Clean the device with a dust-free cloth.

## EU responsible person

EU based economic operator ensuring the product complies with the required regulations.

ASSMANN Electronic GmbH  
Auf dem Schüffel 3  
Lüdenscheid, Germany  
<https://www.assmann.com>

[info@assmann.com](mailto:info@assmann.com)