

DIGITUS Consolidation point box, 6-port Keystone modules with intelligent cable manager

DN-93708-6
EAN 4016032497516



Consolidation Point Box, 6 ports Keystone modules with smart cable manager

Consolidation points (CP) are collection points for structured building cabling, especially in the commercial or industrial sector. These core elements of cabling systems are used in buildings and open-plan offices as connection or distribution points for workstations. The DIGITUS® consolidation point box is designed to accommodate 4 Keystone modules. The box can be used for wall mounting, in ceilings, underfloor or as a desktop version. With optional accessories (AN-25188), it can also be mounted on a top-hat rail. A cost-effective and flexible solution for a wide range of areas and applications.

Optimal solution to ensure flexible network cabling in the modern office environment (clean desk)

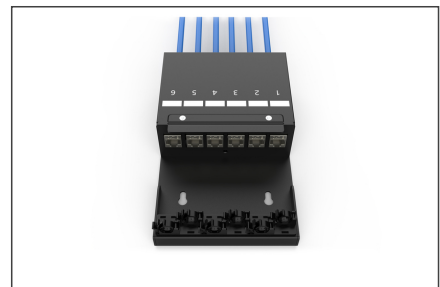
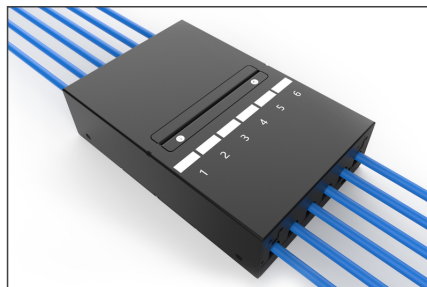
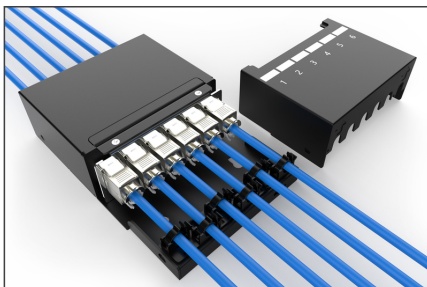
- CP box for 6 modules
- Mounting holes for UTP/STP keystones
- Separate earthing bolt
- Hinged cover with quick-release fastener for CP cable connections
- Cable openings on the front and rear with dust protection
- Material made from robust sheet steel
- Color: black powder-coated (similar to RAL9005)
- Protection class IP20
- Delivery without modules
- Dimensions: 175 x 110 x 45 (WxDxH)

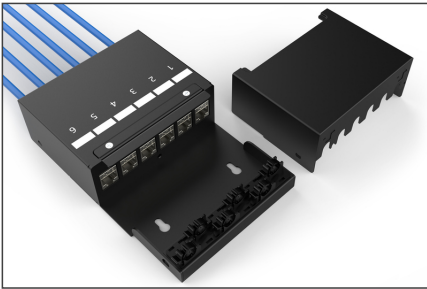
Package contents

- 1 x consolidation point box, 6 ports Keystone modules

Logistics						
	Number (pcs)	Weight (kg)	Depth (cm)	Width (cm)	Height (cm)	cm ³
Packaging Unit Carton	10	8.30	28.00	26.00	21.00	15,288.00
Packaging Unit Inside	1	0.83	17.50	11.00	4.50	866.25
Packaging Unit Single	1	0.83	17.20	11.30	4.40	855.18
Net single without Packaging	1	0.00	0.00	0.00	0.00	0.00

More images:



**Safety notes**

- Avoid antistatic charging when installing the product

EU responsible person

EU based economic operator ensuring the product complies with the required regulations.

ASSMANN Electronic GmbH
Auf dem Schüffel 3
Lüdenscheid, Germany
<https://www.assmann.com>
info@assmann.com