

DIGITUS® M.2 NVMe/SATA docking station

DA-71547

EAN 4016032490388



NVMe/SATA Docking Station USB3.2 Gen2 type C NVMe and SATA SSD docking

The SSD docking station from DIGITUS® can accommodate M.2 SSDs in NVMe or SATA technology with up to 4 TB. NVMe SSDs with B+M Key & M-Key as well as SATA SSDs with B+M-Key, each in the formats 2242, 2260, 2280 & 22110 are supported. Easily expand the storage capacity of numerous USB-C™ devices such as PCs, notebooks, TVs, game consoles or routers.

Manage M.2 NVMe and M.2 SATA SSDs via a USB-C™ connection

- 1 x M.2 bay for NVMe / SATA SSDs (B+M-Key / M-Key)
- Supported formats: 2242, 2260, 2280 & 22110
- Capacity: max. 4 TB
- USB-C™ connections: 1 x data USB-C™ 3.2 Gen2, 1 x power supply USB-C™ socket
- Downwards compatible with USB 3.0 / USB 2.0
- Maximum transfer rate USB-C™: 10 Gbps

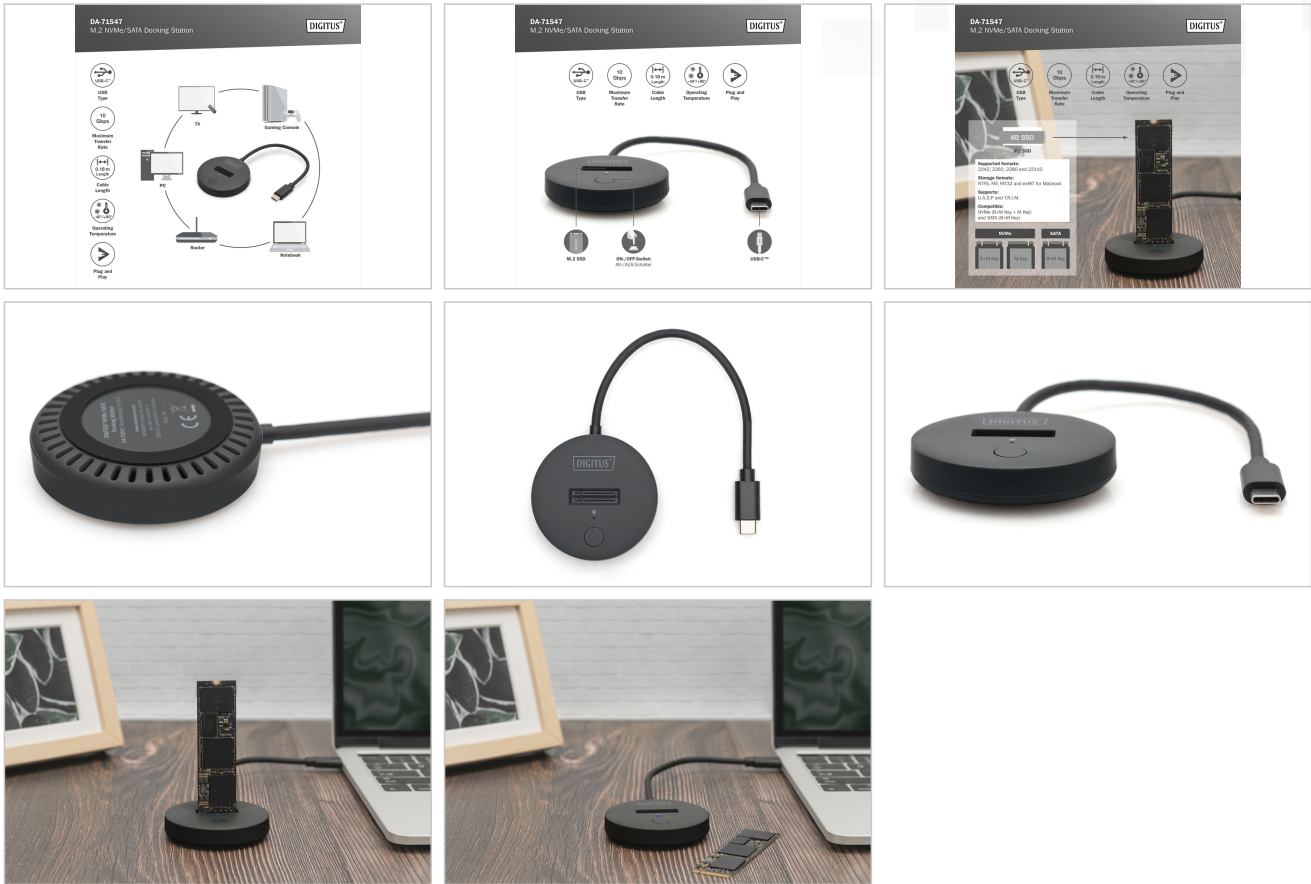
- Supports U.A.S.P. and T.R.I.M.
- Supports hot swap (insertion and ejection during operation)
- LED indicators for hard disk transfer (blue) & power (blue)
- Areas of application: PC, notebook, TV, router or game consoles (with USB-C™ connection)
- Storage formats: NTFS, FAT, FAT32
- Systems: Windows 11/10/8/8.1/7/XP, macOS 10.0 or higher
- Length of the connection cable: 18 cm
- Dimensions: W: 6 x D: 6 x H: 1.45 cm
- Weight: 40 g
- Housing: Aluminum + ABS
- Color: Black
- Operating temperature: -40°C ~ 80°C

Package contents

- 1 x SSD docking station
- 1 x quick start guide

Logistics						
	Number (pcs)	Weight (kg)	Depth (cm)	Width (cm)	Height (cm)	cm ³
Packaging Unit Carton	100	12.60	24.00	52.00	22.00	27,456.00
Packaging Unit Inside	1	0.13	11.00	9.80	1.70	183.26
Packaging Unit Single	1	0.13	11.00	9.80	1.70	183.26
Net single without Packaging	1	0.04	5.00	5.00	1.50	0.00

More images:



Safety notes

- Overloading can lead to overheating and damage to the appliance or the connected peripherals.
- If necessary, use an external power supply to ensure stable performance.
- If devices such as external hard disks or printers that require a high power consumption are connected, the device should be used with an external power supply. Otherwise, the device could be overloaded or functional problems could occur.
- Do not expose the device to rain, moisture, vapors or liquids.
- Do not insert any objects into the device.
- Do not attempt to repair the unit or open the housing without authorization. You risk an electric shock!
- Ensure adequate ventilation to prevent damage due to overheating.
- Dust, moisture, vapors and strong cleaning agents or solvents can cause damage to the device.
- Disconnect the appliance from the power supply and the connected devices before cleaning.
- Clean the device with a dust-free cloth.

EU responsible person

EU based economic operator ensuring the product complies with the required regulations.

ASSMANN Electronic GmbH
 Auf dem Schüffel 3
 Lüdenscheid, Germany
<https://www.assmann.com>
info@assmann.com