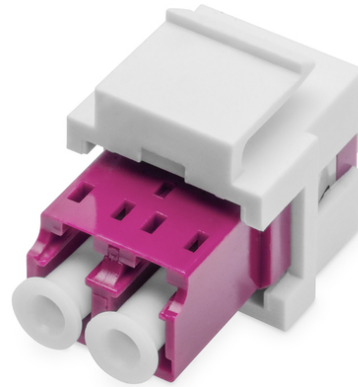


# DIGITUS® Acoplador duplex LC/LC de fibra ótica, multimodo OM4, módulo keystone

DN-96019-1-K

EAN 4016032489825



## Acoplador duplex LC de fibra ótica, MM-OM4, para painel Keystone Cor púrpura, incl. moldura de pedra angular

Os acopladores keystone de fibra ótica são utilizados para ligar dois cabos de fibra ótica LC, de modo a aumentar o comprimento da ligação do cabo. A instalação é extremamente simples graças à tecnologia de encaixe. São simplesmente encaixados em painéis de remendo keystone ou painéis de parede com aberturas padrão para que os cabos possam ser introduzidos através da parede e convenientemente ligados à sua rede de fibra ótica.

**Graças às suas dimensões normalizadas, os adaptadores encaixam na maioria das caixas de distribuição e tomadas de parede convencionais, o que os torna uma excelente solução para levar a fibra ótica para as casas e escritórios.**

- Tipo de conector: LC-LC Duplex
- UPC polido
- Modo de fibra: Multimodo OM4
- Tipo de montagem: Sem flange
- Cor: púrpura
- Material da manga: Cerâmica
- Material: Plástico (ABS)
- Gama de temperaturas de funcionamento: -25 a 70 °C
- Faixa de temperatura de armazenamento: -25 a 70 °C
- Peso: 0,005 kg
- Dimensões (C x L x P): 17 x 22 x 33 mm

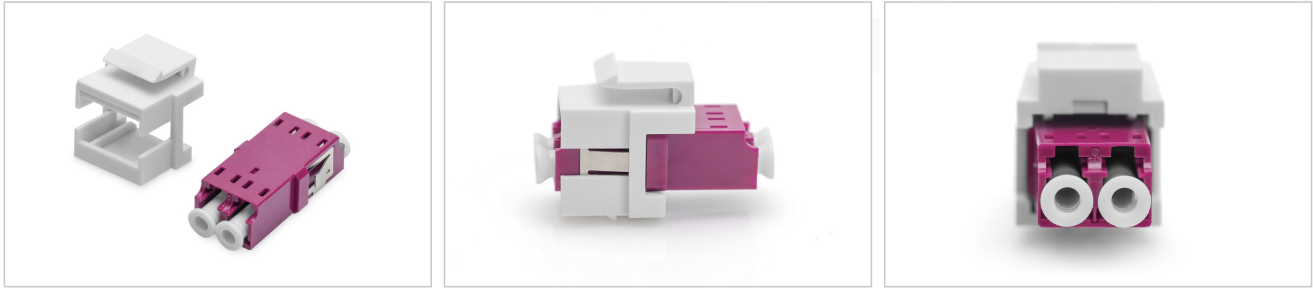
### Package contents

- Acoplador LC/LC MM OM4 para módulo Keystone

### Logistics

	Number (pcs)	Weight (kg)	Depth (cm)	Width (cm)	Height (cm)	cm³
Packaging Unit Carton	500	4.30	53.50	31.30	23.40	39,184.50
Packaging Unit Inside	50	0.43	20.00	14.50	10.00	2,900.00
Packaging Unit Single	1	0.01	10.00	7.00	1.80	126.00
Net single without Packaging	1	0.01	3.30	2.20	1.70	0.00

**More images:**



**Safety notes**

- Avoid direct contact with light sources: Fiber optic cables, especially those with active light sources such as lasers (e.g. in optical communication systems), can emit dangerous radiation that can damage eyes. Take care never to look directly into the light of an optical fiber, even if the light source is invisible to the naked eye.
- When working with fiber optic cables, especially during tests or when working with lasers, protective goggles should always be worn to protect against harmful radiation.
- When plugging and unplugging the cable, only grasp the plug and do not pull directly on the cable.
- Do not kink or crush: Fiber optic cables are sensitive to mechanical stress.
- To protect cables from physical damage, they should be laid in special ducts or with protective materials
- Keep cable connectors clean: Fiber optic cables are sensitive to dust and dirt. Even small particles on the connectors can severely impair the signal quality.
- Cables should not be used in environments with extremely high or very low temperatures. Observe the product information on the maximum operating temperature of the cable
- Check cables regularly for visible damage such as cracks, kinks or signs of wear. Defective cables should be replaced immediately.

**EU responsible person**

EU based economic operator ensuring the product complies with the required regulations.

ASSMANN Electronic GmbH  
Auf dem Schüffel 3  
Lüdenscheid, Germany  
<https://www.assmann.com>  
[info@assmann.com](mailto:info@assmann.com)