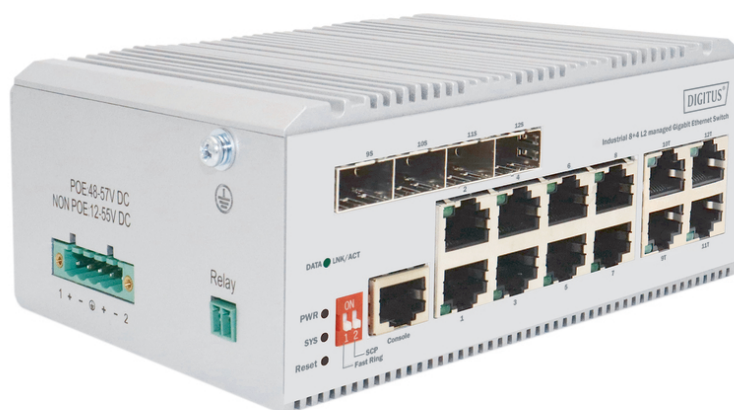


# DIGITUS Industrial 8+4 L2 managed Gigabit Ethernet Switch

DN-651145

EAN 4016032489221



## Industrial 8+4 L2 managed Gigabit Ethernet Switch 8 Port GEE RJ45, 4 Port GE SFP

The DN-651145 Industrial network switch provide 8 x 10/100/1000Mbps RJ45 ports and 4 Gigabit Combo ports. The RJ45 ports from 1-8 support PoE power supply with a maximum of 30W for each port. DN-651145 offers excellent security policy, QoS policy, and rich VLAN function. Additionally, it has a ring network function that allows you to set up a ring network. With this feature, the switches form a ring network topology manually. The ring network is redundant, highly reliable, and won't affect data forwarding in case a link is broken. The device is designed with a no-fan, low power consumption design, making it easy to use, compact, and beautiful. It is also simple to install. The product meets Ethernet standards, has lightning protection, static protection mechanisms, and operates in a temperature range of -40°C to 75°C. This guarantees stable performance, safety, and reliability. V1 can be widely used in various broadband data transmission fields such as intelligent transportation, telecommunications, security, financial securities, customs, among others.

### The DN-651145 Industrial network switch provide 8 x 10/100/1000Mbps RJ45 ports and 4 Gigabit Combo ports.

- Complies with IEEE802.3, IEEE802.3u, IEEE802.3ab, IEEE802.3z, IEEE802.3x standards;
- Data transmission distance is 100 meters.
- Supports IEEE802.3x full-duplex flow control and Backpressure half-duplex flow control, Panel indicators monitor working status and assist in fault analysis.
- High energy aluminum alloy roof heat conduction groove design.
- Supports one-click ring network and one-click storm suppression, featuring redundancy and high reliability;
- High reliability design, supporting traditional STP/MSTP/RSTP 2-layer link protection technology.
- Support static convergence and dynamic convergence (LACP) 2 convergence modes, effectively increase the link bandwidth, improve the reliability of the link, and at the same time can achieve load balancing, link backup.
- Flexible and convenient management and maintenance Supports various management modes, such as Console, Telnet, and SSH.
- Supports WEB management, which is simple and efficient, and facilitates installation and debugging by engineering and maintenance personnel. Supports file upload and download management through TFTP
- Interface: 8\*10/100/1000Mbps RJ45 Ports, 4\*10/100/1000Mbps Combo, 1 Console Port
- Indicator: PWR, LNK/ACT, SYS

- Network Media: 10BASE-T: UTP category 3,4,5 cable(≤100m), 100BASE-TX: UTP category 5, 5e cable(≤100m), 1000BASE-T: UTP category 5e, 5 cable(≤100m), 1000BASE-X: MMF, SMF
- MAC Address Table: 8K, Auto-learning, Auto-update
- Jumbo Frame: 9216Byte
- Packet Buffer: 4.1M bit
- Transfer Mode: Store-and-forward
- Packet Forward Speed: 17.86Mpps
- Switching Capacity: 24Gbps
- Dimensions(L\*W\*H): 145\*109\*62mm
- Fan Quantity: Fanless
- Green Energy Saving: IEEE 802.3az
- Input Power Supply: DC:12-55V
- Operating Temperature: -40°C ~ 75 °C
- Storage Temperature: -40°C ~ 80 °C
- Operating Humidity: 5% ~ 95% non-condensing
- Storage Humidity: 0% ~ 95% non-condensing
- Surge Protection: Differential mode ±2KV, Common mode ±6KV
- MTBF: >100000 hour
- Electrostatic Standard: Contact ±6KV , Air ±8KV
- Software Specification: spanning Tree, IEEE 802.1D -Spanning Tree, IEEE 802.1w -Rapid Spanning Tree, IEEE 802.1s -Multiple Spanning Tree, BPDU Guard, STP Root Guard, Loop Detection
- VLAN: Management: VLAN, Private VLAN, Voice VLAN, Surveillance-VLAN, Q-in-Q (Double Tag), 802.1v Protocol VLAN, MAC-Based VLAN, Port IEEE 802.3ad with LACP(Dynamic), Static Trunk EEE, Jumbo Frame, Error-Disable, IGMP Snooping: IGMP Snooping v1/v2/v3, MLD Snooping v1/v2, MVR, QoS Features, Hardware Queues, Class Of Service, Port Based, 802.1p, CoS, DSCP, IP Precedence, TCP/UDP (IPv4/IPv6), Rate Limiting Ingress Egress, Priority Queue Scheduling, WRR, Strict Priority, DSCP & CS, IPv4 QoS (QCEs)
- IPv6 QoS (QCEs), Security, Port Security, Port Isolation, IEEE802.1x AAA, ACLs
- L2+/L3/L4, IPv6 Support, Management Access List, Management ACL/Management ACE, IP Source Guard (IP-MAC-Port-VLAN Binding)
- IP Source Guard (IP-MAC-Port Binding), Dynamic ARP Inspection, Storm Control, RADIUS/TACACS+, RADIUS Authentication (RFC2138), DDos Prevention, HTTPs and SSL (Secured Web), SSH v1.5/v2.0 (Secured Telnet Session)
- DHCP Snooping, DHCP Relay, Management, SNMP (v1, v2c, v3), RMON ( 1,2,3 & 9 groups), Software Upgrade, Configuration Export/Import

- Event/Error Log: Syslog, Management Access Filtering, Console, SNMP, HTTP/HTTPS, Telnet, Port Mirroring, LLDP (IEEE802.1AB), LLDP-MED, UDLD, DNS Client, Traceroute, Ping, Cable Test, DDMM, NTP/ SNTP (RFC2030)
- IPv6 Support: Dual IPv6/IPv4 stack, IPv6 Web/SSL, IPv6 SNTP (Simple Network Time Protocol), IPv6 Telnet / SSH, IPv6 Ping/Trace route, IPv6 TFTP, IPv6 RADIUS/TACACS+, IPv6 SNMP,
- EC000734

#### Attributes

- PoE standard: IEEE802.3at (PoE+)

- Industrial usage: yes
- Installation type: DIN rail
- Managed: yes
- Outdoorsuitable: no
- PoE (Power over Ethernet): yes
- Protection against vandalism: no
- VLAN: yes

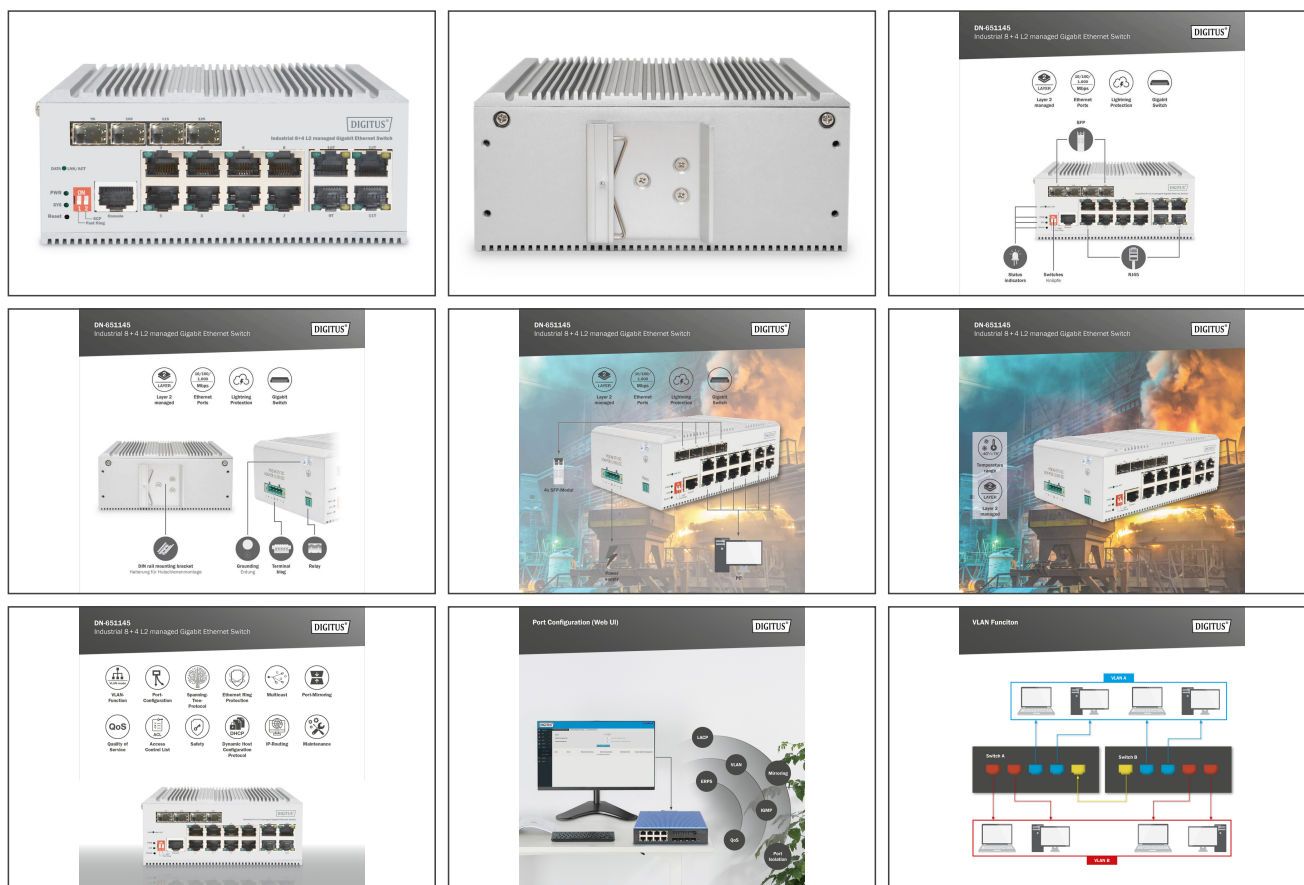
#### Package contents

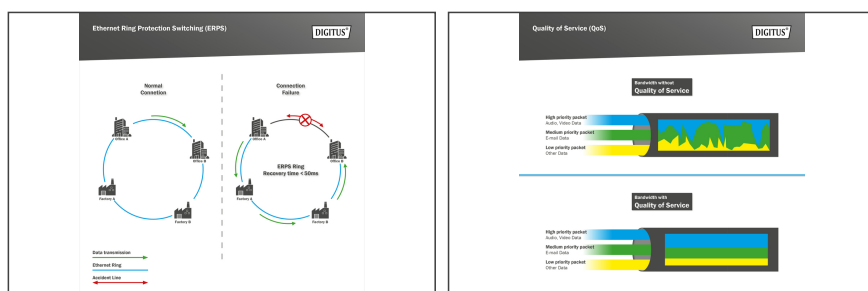
- 8-Port Gigabit + 4G Combo Industrial Fast Ring Managed Switch
- Manual

#### Logistics

|                              | Number (pcs) | Weight (kg) | Depth (cm) | Width (cm) | Height (cm) | cm <sup>3</sup> |
|------------------------------|--------------|-------------|------------|------------|-------------|-----------------|
| Packaging Unit Carton        | 8            | 11.28       | 40.50      | 37.00      | 25.00       | 37,462.50       |
| Packaging Unit Inside        | 1            | 1.41        | 0.00       | 0.00       | 0.00        | 0.00            |
| Packaging Unit Single        | 1            | 1.41        | 23.40      | 19.00      | 8.60        | 3,823.56        |
| Net single without Packaging | 1            | 1.07        | 14.50      | 10.90      | 6.20        | 0.00            |

#### More images:





## Safety notes

- This product is intended for indoor use only.
- Read all instructions and follow all warnings and instructions on the device.
- Do not place this appliance on an unstable surface (such as a trolley, stand, table, etc.).
- Do not use this appliance near water.
- Do not place this appliance near or above a radiator.
- The housing is equipped with openings for heat dissipation and ventilation. To prevent overheating during operation, the ventilation openings must not be blocked or covered.
- Do not place the appliance on a soft surface (e.g. bed, sofa, blanket, etc.). This will block the ventilation.
- The appliance must not be installed in a closed environment if adequate ventilation is not guaranteed.
- Do not spray any liquids onto the appliance.
- Disconnect the mains plug before cleaning. Do not use any liquid or foam cleaners.
- Clean the appliance with a damp cloth.
- Connect the device according to the power supply on the rating plate.
- To prevent damage to the appliance, it is important that all appliances are properly earthed.
- Do not place any objects on the power cable and lay it in such a way as to avoid tripping hazards.
- Use a surge protector, a regulator or an uninterruptible power supply (UPS) to protect your system from sudden, temporary and reduced power.
- Secure the system cable and mains cable properly and ensure that no objects are pressing on the cable.
- Do not insert any objects into the appliance through the openings in the housing. There is a risk of a short circuit, which can lead to fire or electric shock.
- Do not attempt to repair the appliance yourself. Always contact an authorized customer service centre.
- If any of the following conditions occur, unplug the appliance and send it to an authorized service centre for repair:
  - The mains cable, power supply unit or plug for the power supply is damaged or worn;
  - Liquid has penetrated the appliance;
  - The device has been exposed to rain or water;
  - The device has been dropped or the housing has been damaged;
  - The function of the device has obviously changed;
  - The appliance cannot be operated as described in the operating instructions.

## EU responsible person

EU based economic operator ensuring the product complies with the required regulations.

ASSMANN Electronic GmbH  
 Auf dem Schöffel 3  
 Lüdenscheid, Germany  
<https://www.assmann.com>  
[info@assmann.com](mailto:info@assmann.com)