

DIGITUS® 2-Port MST Video Hub (USB-C™ -> 2x HDMI)

DS-45338

EAN 4016032483731



USB-C - 2x HDMI MST Video Hub DP 1.4, HDMI 2.0, 4K/60Hz

The DIGITUS® MST Hub uses Multi Stream Transport (DisplayPort™ 1.2 function), which allows multiple AV signals to be transported over a single cable. This enables the use of multiple monitors that are connected via the MST Hub configuration. The MST Hub can distribute different video streams to the two connected screens. In general, it supports three reproduction modes: Mirror (1 signal mirrored on 2 displays), extend (2 signals on 2 displays), distribute (1 signal distributed across 2 displays).

MST Hub for connection of up to 2 external monitors via a video output on the notebook/PC - Increase your productivity with multiple screens

- 1x USB-C™ input
- 2x HDMI output
- Supports DP 1.4 (Alt mode) with maximum 8.1 Gbps per channel, max. 32.4 Gbps on 4 channels
- Supports Windows OS (11, 10)
- Resolution host PC with DP 1.4: max. 2x 4K/60Hz
- Resolution host PC with DP 1.2: max. 2x 4K/30Hz
- Power supply via a USB-C™ connection - BUS powered
- No driver or software required - Configuration via the display settings in Windows OS
- Supports 3 display modes: Mirror (1 signal mirrored on 2 displays), extend (2 signals on 2 displays), distribute (1 signal distributed across 2 displays).
- HDCP 2.2 / 1.4
- Supports HDR (High Dynamic Range)
- Supports MST (Multi Stream Transport) & SST - Single Stream Transport
- Housing: ABS
- Operating temperature: 0-45 °

- Standby power consumption: approx. 0.5W
- Dimensions: L 5.5 x W 5 x H 1.15 cm
- Weight: 43 g
- Color: Black
- Note:
- To achieve the resolutions stated above, the host PC should support DP 1.4 (Alt mode). If your PC only supports DP 1.2, the corresponding resolutions are reduced due to the bandwidth restriction
- The resolution combinations stated above are a theoretical reference, the actual resolutions depend from the connected host PC as well as the display
- In order to use the full scope of features, make sure that your device (graphics card) uses DP 1.4.
- If you use a DisplayPort 1.1 graphics card, the MST Hub acts as a splitter and mirrors your video source on all displays
- Functionality can be restricted depending on the specifications of your device and operating system
- MST Hubs cannot increase the number of screens supported by a graphics card. Every graphics card has a limited number of screens that it can support. Please check your specifications in advance.
- Requires at least a host system with DP 1.2/HBR2/MST or higher (recommended)
- Supports AMD, Nvidia and Intel graphics cards

Attributes

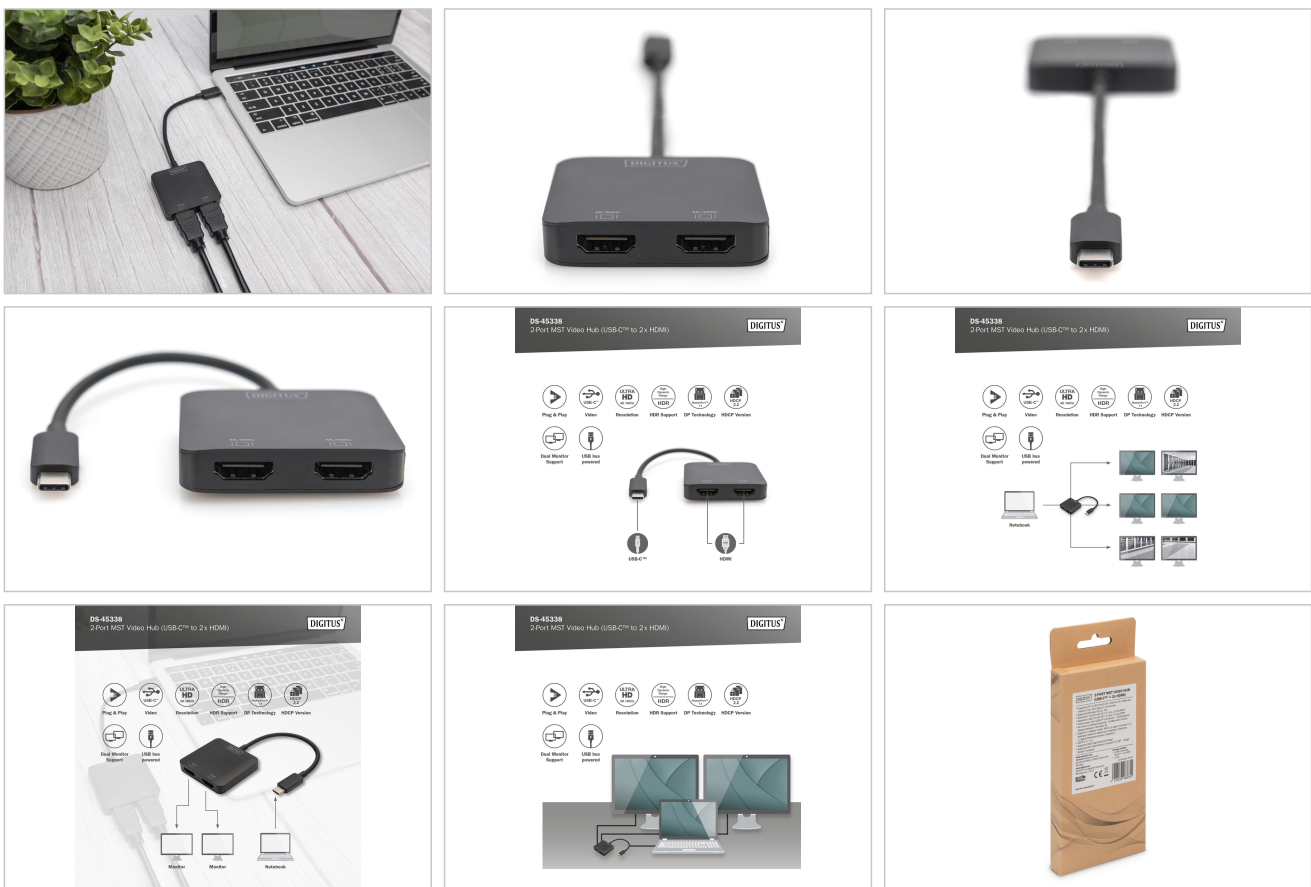
- Audio: no

Package contents

- 1x MST Video Hub (USB-C™ -> 2x HDMI)
- 1x QIG

Logistics						
	Number (pcs)	Weight (kg)	Depth (cm)	Width (cm)	Height (cm)	cm ³
Packaging Unit Carton	50	4.23	34.00	42.00	10.00	14,280.00
Packaging Unit Inside	1	0.08	0.00	0.00	0.00	0.00
Packaging Unit Single	1	0.08	2.00	8.00	16.00	256.00
Net single without Packaging	1	0.04	5.00	5.50	1.20	0.00

More images:



EU responsible person

EU based economic operator ensuring the product complies with the required regulations.

ASSMANN Electronic GmbH
 Auf dem Schüffel 3
 Lüdenscheid, Germany
<https://www.assmann.com>
info@assmann.com