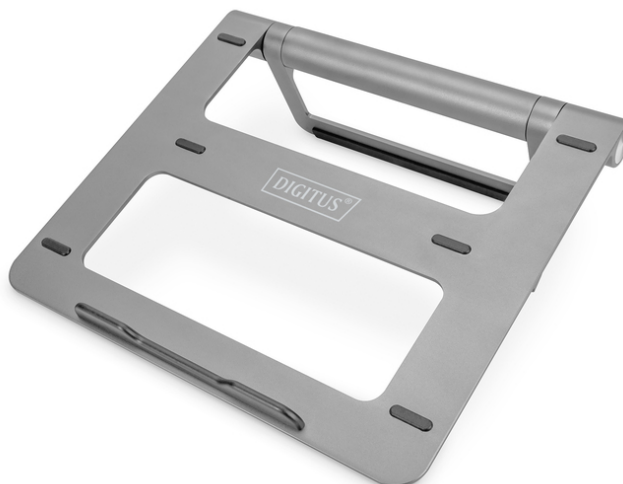


# DIGITUS Variable Notebook Stand with 7-Port Pop-Out USB-C™ Docking Station

DA-90440

EAN 4016032482291



## Notebook Riser with USB-C Hub 1x PD, 2x USB-A 3.0, 1x TF, 1x SD, 1x HDMI, 1x RJ-45

The variable notebook stand with 7-Port Pop-Out USB-C™ Docking Station from DIGITUS® combines ergonomics and connectivity. The stand can be rotated 360° and allows for individual angle adjustment. The docking station offers 7 ports to expand your notebook's connectivity - This can be taken out of the stand and used as an external peripheral device, whether on the go or for stationary use. All in all, the stand can be folded together completely (incl. dock) and is therefore also the perfect mobile companion as a whole.

### Ergonomics meets connectivity - Variable Notebook Stand with 7-Port Pop-Out USB-C™ Docking Station

- Foldable - Flexible use, whether stationary or on the go
- Variable stand (360° rotatable) for individual angle adjustment
- 7-Port Pop-Out USB-C™ Docking Station - The Docking Station can be removed and used as a standalone peripheral device
- Connections USB-C™ Dock:
  - 1 x USB-C™ (host) - USB 3.1 Gen 1
  - 1 x USB-C™ (PD 3.0) - 100 W max. power supply
  - 1 x HDMI (4K/30Hz)
  - 2 x USB-A - USB 3.0/5 Gbps data transfer
  - 1 x RJ-45 - Gigabit Ethernet (10/100/1000) for connecting to the network/Internet
  - 1 x microSD card reader
  - 1 x SD card reader

- Integrated cable management on the underside- For stowing the USB-C™ connection cable (included).
- Elegant aluminum
- Dimensions: 26 (D) x 23.6 (W) x 2.6 (H) cm
- Weight: 500 g
- Color: Gray
- Manufacturer's notice:
  - Not all USB-C™ ports support all the features of the USB Type-C™ standard. Make sure that your notebook's USB-C™ port supports the DisplayPort Alternate Mode (DP Alt Mode) as well as USB Power Delivery (PD)
  - The video output capabilities depend on your notebook's graphics card and the connected monitor. Certain graphics cards have limited MST support while some screens also restrict the available resolution
  - The power adapter used should provide at least 100 watts to power a connected notebook as well as the Docking Station via the USB-C™ port

### Package contents

- Variable Notebook Stand with 7-Port Pop-Out USB-C™ Docking Station
- Variable Notebook Stand with 7-Port Pop-Out USB-C™ Docking Station
- USB-C™ connection cable
- QIG

Logistics						
	Number (pcs)	Weight (kg)	Depth (cm)	Width (cm)	Height (cm)	cm³
Packaging Unit Carton	10	8.64	38.30	30.30	29.50	34,234.50
Packaging Unit Inside	1	0.86	0.00	0.00	0.00	0.00
Packaging Unit Single	1	0.86	26.30	27.40	3.50	2,522.17
Net single without Packaging	1	0.50	26.00	23.50	2.70	0.00

More images:

