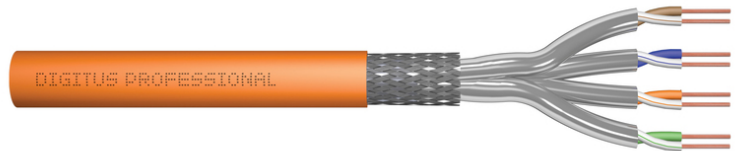


DIGITUS® CAT 7 S-FTP data cable - installation cable, 25 m, simplex, Dca-s2,d1,a1

DK-1743-VH-025

EAN 4016032480778



CAT 7 S-FTP installation cable, 1200 MHz Dca (EN 50575), AWG 23/1, 25m ring,Sx, orange

The Digitus® Cat.7 S/FTP installation cable is characterized by the following cable structure 4x2x AWG23/1 and achieves a transmission frequency of up to 1200 MHz. The halogen-free cable sheath conforms to the IEC 60332-3-24, FRNC-C, LSZH-3 and BauPVO Euroclass Dca standards. The cable is suitable for structured building cabling in secondary and tertiary areas. Conforms to the standards ISO/IEC 11801, DIN EN 50173, DIN EN 50288-4-1.

10GBit Ethernet

- Conductor: Bare copper wire, AWG 23/1
- Insulation: SFS-PE (foamed polyethylene jacket)
- Total number of insulated conductors: 8, twisted into 4 pairs
- Color code: Blue-white, orange-white, green-white, brown-white
- Shielding of the individual pairs: aluminum-laminated polyester film, covers 100%
- Overall shielding: copper braiding
- Outer sheath: Eca to B2ca in accordance with EN 50575; LSZH
- Outer sheath thickness (nominal): 0.50 mm (Eca); 0.52 mm (Dca); 0.60 mm (Cca); 0.60 (B2ca)
- Color: Orange (RAL 2008)
- Mechanical properties:
- Strain relief: 150N max.
- Dynamic bending radius: 8x AD mm min.
- Static bending radius: 4x AD mm min.
- Transport and storage temperature range: -20 °C to +75 °C
- Operating temperature range: -20 °C to +50 °C

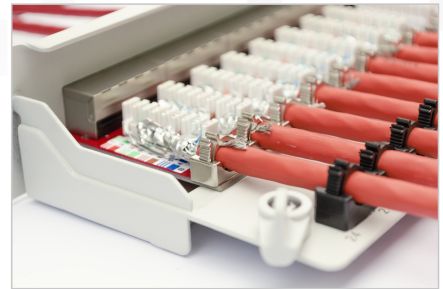
- Installation temperature range: 0 °C to +50 °C
- Outer diameter simplex (nominal): 7.0 mm (Eca); 7.2 mm (Dca); 7.5 mm (Cca); 7.5 mm (B2ca)
- Weight (kg/km): 49.5 kg (Eca); 51 kg (Dca), 53 kg (Cca); 53 kg (B2ca)
- Electrical properties:
- Impedance: 100±15 Ohm @ 4 - 1000 MHz; 100±25 OHM @ 100-600 MHz
- Capacitance: 45pF/m nom. at 1KHz
- Capacitance: 40 pF/m nominal @ 1 KHz
- Insulation resistance: 5 GOhm x km min.
- DC resistance: 95 Ohm/km max. (2% max. unbalanced resistance)
- Loop resistance: 190 Ohm/km max. (2% max. unbalanced resistance)
- Operating voltage: 72 Vdc max.
- Coupling attenuation: CA-Type 1b
- Phase delay: 450 nS/100 m max.
- Time delay: 10 nS/100 m max.
- Separation class: "d" according to EN 50174-2
- NVP: 79%

Attributes

- Assortment: Twisted Pair Installation Cables
- Category: CAT 7
- Shielding: S-FTP, pairs in metal foil and braid shielding
- CPR: Dca
- Length: 25 m
- Color: orange
- Jacket: LSOH
- Structure: 4 x 2 AWG 23/1, solid twisted pair

Logistics						
	Number (pcs)	Weight (kg)	Depth (cm)	Width (cm)	Height (cm)	cm³
Packaging Unit Carton	1	1.35	30.00	30.00	5.50	4,950.00
Packaging Unit Inside	1	1.35	30.00	30.00	5.50	4,950.00
Packaging Unit Single	1	1.35	30.00	30.00	5.50	4,950.00
Net single without Packaging	1	1.25	12.00	19.00	8.00	0.00

More images:



DIGITUS

AWG 23/1 | 1200 MHz | 10 Gbit Ethernet | CAT 7 1000 Mbps

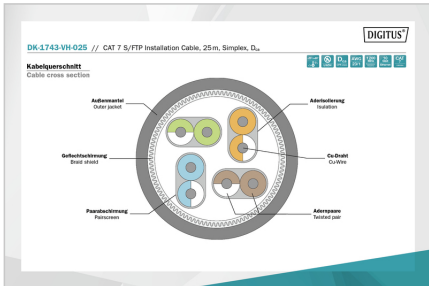
20°/+50° | LSZH | Dca | CPE class

CAT 7 S/FTP Installation Cable, 25m, Simplex, D_{ca}

DIGITUS

DK-1743-VH-025 // CAT 7 S/FTP Installation Cable, 25m, Simplex, D_{ca}

Anwendungsbeispiel
Example of use



DIGITUS

Produktdaten Product Information	Physikalische Spezifikationen Physical Properties
Bezeichnung / Part Number: CAT 7 S/FTP Installation Cable, 25m, Simplex, D _{ca} Hersteller / Manufacturer: ASSMANN Electronic GmbH Produktionsort / Production Place: China Material / Material: PVC, LSZH, Copper, Aluminum, Steel, Plastic Farbe / Color: Orange Abmessungen / Dimensions: 25m length, 10mm diameter Nettogewicht / Net Weight: 0.15kg Bruttogewicht / Gross Weight: 0.2kg	Leistungsfähigkeit / Performance: 10 Gbit Ethernet, 1000 Mbps Temperaturbereich / Temperature Range: -20°C to +50°C Flammverhalten / Flamm Behavior: LSZH (Low Smoke Zero Halogen) EMV / EMC: Dca, CPE class Lebensdauer / Lifetime: 10 years

DIGITUS

Leistungseigenschaften Transmission Properties

Modul	AWG	NEWT	PL NEWT	AWG	PL AWG	IL	RL (dB)	PL (dB)
1	2	24	24	24	24	28	28	28
10	18	20	20	20	20	24	24	24
100	16	18	18	18	18	22	22	22
1000	14	16	16	16	16	20	20	20

DIGITUS

CEP Konformität
Conformity

Bestandteile / Components

- B2ca: Silber hoch / High Silver
- Cca: Hoch / High
- Dca: Mittel / Middle
- Eca: Gering / Low

Leitungsprotokolle / Protocols

- 1+
- 3

Anforderungen / Requirements

- Spannungsfeld / Voltage field
- Temperaturbereich / Temperature range
- Feuchtigkeit / Humidity
- Regelmäßige Filterung / Regular filtering

Zusatzanforderungen / Additional requirements

- s: Beschleunigung / Acceleration
- d: Vibration / Vibration
- a: Aufprall / Impact

CEP Konformität / CEP Conformity

Cca s1a d1 a1



Safety notes

- Data cables must not be bent, stretched or twisted excessively. Sharp bends can damage the cable sheath and lead to failures or short circuits.
- Installation only by trained specialists.
- Installation only in dry rooms.
- The data cable must not be in direct contact with other electrical cables or high-voltage sources in order to avoid electromagnetic interference.

EU responsible person

EU based economic operator ensuring the product complies with the required regulations.

ASSMANN Electronic GmbH
 Auf dem Schüffel 3
 Lüdenscheid, Germany
<https://www.assmann.com>
info@assmann.com