

DIGITUS Pull-Out Keyboard Shelf for Under-Desk Installation

DA-90413
EAN 4016032475019



Under-Desk Keyboard Tray, tilt/swivel, 2 kg. max Black

The Pull-Out Keyboard Shelf from DIGITUS® provides additional space on your desk and protects your joints. It can be swiveled by 360° and tilted by 25° (+10° to -15°), allowing this convenient holder to adapt perfectly to your sitting position and posture. The soft wrist rest counteracts fatigue and protects your joints while you work. When not in use, you can slide the entire shelf under the desk thanks to a smooth-running rail system. Relieve your wrist, arms and shoulders by adapting the keyboard shelf to your individual needs. Maximum comfort for daily work at home and in the office.

Tiltable platform for optimal comfort (+10° to -15°)

- Wrist rest: Gel pad

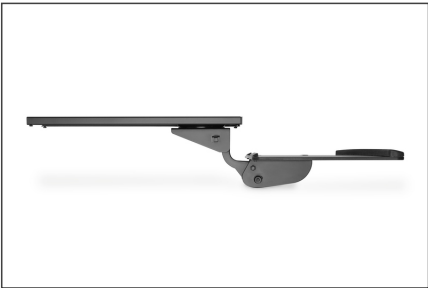
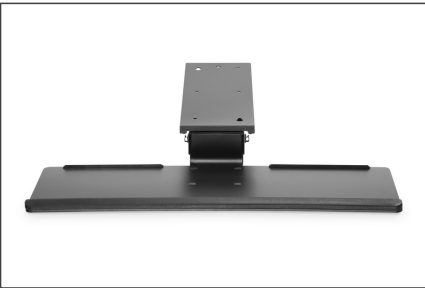
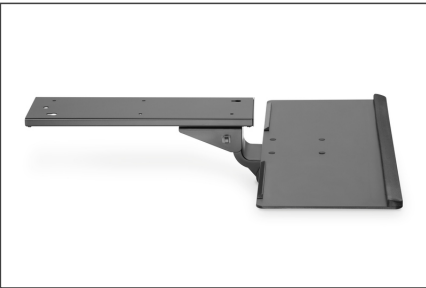
- Easy glide: Slide mechanism
- Angle of inclination: +10° to -15°
- Pivot range: +180° to -180°
- Extendible range: 27 cm
- Maximum load capacity: 2 kg
- Material: Plastic, composite board, aluminum, steel
- Dimensions of keyboard shelf surface: W 67 x D 25.5 cm
- Dimensions: W 67 x D 14.5 x H 71 cm
- Weight: 5 kg

Package contents

- 1 x Pull-Out Keyboard Shelf for Under-Desk Installation
- 1 x QIG

Logistics						
	Number (pcs)	Weight (kg)	Depth (cm)	Width (cm)	Height (cm)	cm³
Packaging Unit Carton	1	5.48	27.00	72.50	18.00	35,235.00
Packaging Unit Inside	1	5.48	27.00	72.50	18.00	35,235.00
Packaging Unit Single	1	5.48	27.00	72.50	18.00	35,235.00
Net single without Packaging	1	5.02	71.00	67.00	14.50	0.00

More images:





Safety notes

- Please read the entire manual before starting assembly and installation. Please contact your local dealer if you have any questions about the instructions or warnings.
- CAUTION: Use with products that exceed the permitted weight may result in damage or possible injury.
- Brackets should be fitted in accordance with the installation instructions. Incorrect installation can result in damage or injury.
- Use safety equipment and suitable tools. The product should only be installed by specialists.
- The load-bearing surfaces should be able to safely withstand the entire weight of appliances and all additional components.
- Only use the installation screws supplied and DO NOT TIGHTEN the screws TOO TIGHT.
- This product contains small parts that can cause a choking hazard if swallowed. Keep these parts away from children.
- Only use this product indoors. Using the product outdoors can lead to injuries and damage.
- IMPORTANT: Before installation, please compare all components received with the components list. If parts are damaged or missing, ask your local dealer for replacement parts.

EU responsible person

EU based economic operator ensuring the product complies with the required regulations.

ASSMANN Electronic GmbH
 Auf dem Schüffel 3
 Lüdenscheid, Germany
<https://www.assmann.com>
info@assmann.com