

DIGITUS® CAT 6A Slim Patch Panel, shielded, 8-port, 0.5 U, 10", black

DN-91608S-SL-EA
EAN 4016032473169



CAT 6A Patch Panel, shielded, 8-Port 1/2U, 10" rack mount, black RAL 9005

The DIGITUS® 8-Port Patch Panel offers a very high packing density with only 0.5 U. This means that up to 16 ports can be implemented on 1U with two 0.5 U panels. The patch panel is shielded. The 360° shield contact of the cables ensures the best performance characteristics. The installation cables can be securely fixed with the integrated cable clamps. The quick-release fastener on the housing ensures easy and tool-free access to the LSA cutting terminals. It complies with the 802.3at PoE+ and the 802.3af PoE standard.

Very space-saving (only 0.5U) - future-oriented standards and high-end quality for your network

- Transmission characteristics: Category 6A, class EA
- Application areas: Up to 500 MHz, 10GBase-T
- Standards: ISO/IEC 11801 2nd Ed., EN 50173-1, EIA/TIA 568-C, 802.3af, 802.3at PoE+
- Suitable for 254 mm (10") cabinet mounting
- RJ45 sockets, 8P8C
- Cable installation via LSA strips, color-coded according to EIA/TIA 568 A & B
- Cable fixation using cable ties
- Central earthing connection
- 360° shield contacting

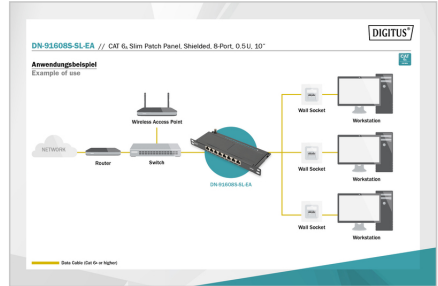
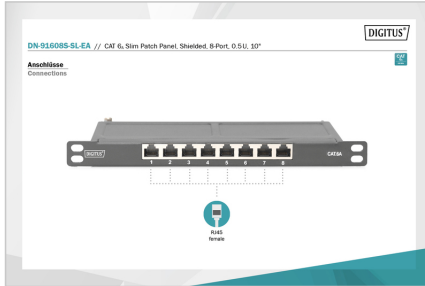
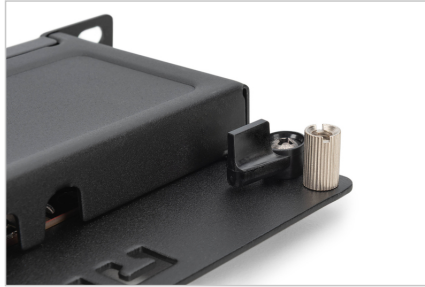
- Housing material: 1.5 mm galvanized, cold-rolled steel according to EN1.4301, UNS S30400, AISI 304 and LMSAD110
- RJ45 socket material: ABS UL 94V-0
- Contact RJ45 socket: Nickel-plated phosphor bronze, 0.5 mm gold-plated contact
- RJ-45 shielding: Nickel-plated bronze
- LSA cutting terminal: LSA+, UL 94V-0, galvanized phosphor bronze
- Printed circuit board: FR4, UL 94V-0
- Insertion force: 30N max. (IEC 60603-7-5)
- Tensile load: 7.7 kg between socket and plug
- Operating temperature: -20° C to +70 °C (ISO/IEC 11801, EN 50173-1, ANSI/TIA/EIA 568 C)
- Socket mating cycle: > 750 acc. to ISO/IEC 11801, IEC 60603-7-5
- Terminal: > 200 acc. to ISO/IEC 11801, IEC 60603-7-5
- Core receptacle: 22-26 AWG solid and stranded conductors
- Insulation resistance: > 500 Mohm
- Contact resistance: < 20 milliOhms
- Dielectric strength: 1000 VDC (contact/contact), 1500 VDC (contact/ground)
- Earthing wire: Not included in the scope of delivery

Attributes

- Color: black, RAL 9005
- Ports: 8
- Category: CAT 6A

Logistics						
	Number (pcs)	Weight (kg)	Depth (cm)	Width (cm)	Height (cm)	cm³
Packaging Unit Carton	20	17.80	55.00	32.00	29.00	51,040.00
Packaging Unit Inside	1	0.89	26.00	6.00	12.00	1,872.00
Packaging Unit Single	1	0.89	26.00	6.00	12.00	1,872.00
Net single without Packaging	1	0.89	25.50	4.40	11.00	0.00

More images:



Safety notes

- Protect product from moisture
- Avoid antistatic charging when installing the product
- Observe the specifications of the raw cable manufacturer during installation

EU responsible person

EU based economic operator ensuring the product complies with the required regulations.

ASSMANN Electronic GmbH
 Auf dem Schüffel 3
 Lüdenscheid, Germany
<https://www.assmann.com>
info@assmann.com