

DIGITUS® Adaptador/conversor DisplayPort ativo, DP para DVI

DB-340414-001-S

EAN 4016032468783



Cabo adaptador DisplayPort, DP - tipo DVI (24+5) St/Bu, 0,15m, c/ bloqueio, Full HD, DP 1.1, p/b

O adaptador DisplayPort ativo da DIGITUS® converte sinais DisplayPort em sinais DVI. As resoluções em Full HD (1080p) são suportadas com frequências até 60 Hz. Também suporta HDCP 1.3 e DeepColor de 24 bits, bem como DVI 1.0. O pré-amplificador incorporado e a blindagem dupla garantem uma qualidade de transmissão de primeira classe em todos os tipos de ecrãs HD. O conector DVI é totalmente atribuído (24+5).

Converte sinais DisplayPort para DVI

- Resolução máxima de vídeo suportada: 1920 x 1080 p com 60 Hz
- Modos de transmissão suportados: RBR, HBR, HBR2
- Largura de banda máxima: 10,8 Gbps
- Versão HBR/modo de transferência: HBR1 (2,70 Gbit/s por via)
- Versão HDCP: HDCP 1.3

Attributes

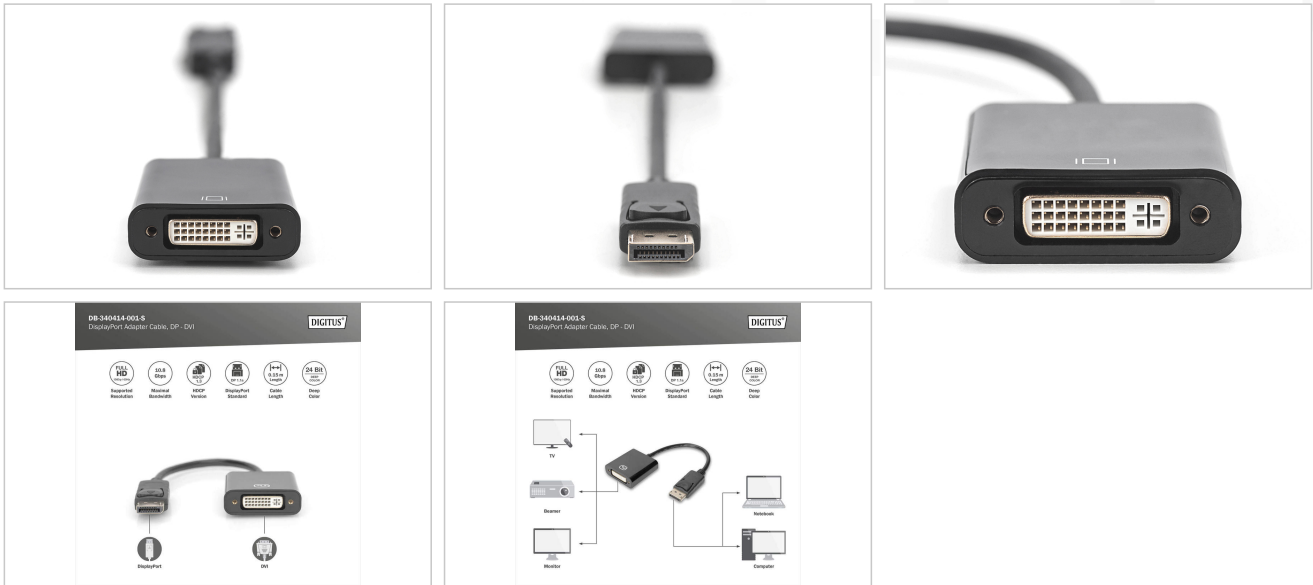
- AWG: 32
- Color cable: black
- Connector 1: DP, plug
- Connector 2: DVI-I, (24+5), jack
- Connector surface: nickel-plated
- DisplayPort standard: DisplayPort 1.1a
- Ferrite filter: none
- HDTV Standard: Full HD
- Hoods: plastic
- Interlock: Snap fastener
- Length: 0.15 m
- AOC - Active Optical Cable: no
- Shielding: Double shielding

Package contents

- 1 x adaptador/conversor DisplayPort ativo para DVI

Logistics						
	Number (pcs)	Weight (kg)	Depth (cm)	Width (cm)	Height (cm)	cm ³
Packaging Unit Carton	80	8.10	51.00	26.00	26.00	34,476.00
Packaging Unit Inside	20	2.03	27.00	25.00	17.00	11,475.00
Packaging Unit Single	1	0.10	23.00	7.50	2.30	396.75
Net single without Packaging	1	0.09	2.50	4.50	1.50	0.00

More images:



Safety notes

- When plugging and unplugging the cable, only grasp the plug and do not pull directly on the cable.
- Cables must not be kinked sharply or bent at tight angles, as this can damage the inner wires and lead to failures.
- Make sure that the cables are not under tensile load, as this can damage the insulation and the wires inside the cable.
- Ensure that cables are not laid in areas where they can be easily damaged mechanically.
- Cables should not be used in environments with extremely high or very low temperatures. Observe the product information on the maximum operating temperature of the cable
- Check cables regularly for visible damage such as cracks, kinks or signs of wear. Defective cables should be replaced immediately to avoid failures, short circuits or even electric shocks.

EU responsible person

EU based economic operator ensuring the product complies with the required regulations.

ASSMANN Electronic GmbH
 Auf dem Schüffel 3
 Lüdenscheid, Germany
<https://www.assmann.com>
info@assmann.com