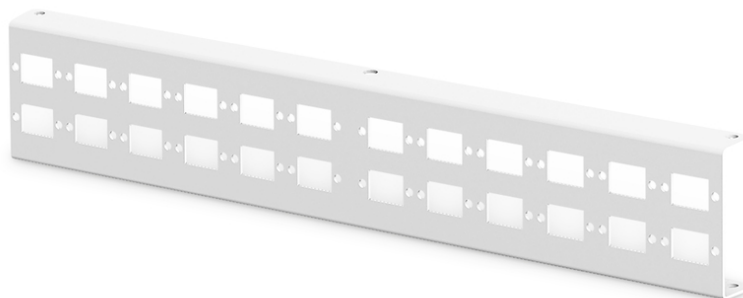


DIGITUS® Placa de adaptação para Unibox de fibra ótica para montagem na parede, média

DN-96801M-2

EAN 4016032466147



Placa de adaptação para DN-96800M-2, cinzento (RAL 7035) 24x SC-SX, LC-DX, E2000-SX

A placa adaptadora para a Unibox de fibras ópticas é utilizada para fixar os acoplamentos que permitem a redistribuição e posterior distribuição das fibras ópticas. É simplesmente fixada ao parafuso roscado da Unibox e aparafusada com a porca de bloqueio.

Suporte compacto para acoplamentos de fibra ótica

- Revestimento a pó em cinzento (RAL 7035)
- Dimensões do produto (A x L x P): 45 x 275 x 15 mm
- Peso: 0,16 kg (líquido); 0,17 kg (bruto)

Package contents

- 1x placa adaptadora

Logistics						
	Number (pcs)	Weight (kg)	Depth (cm)	Width (cm)	Height (cm)	cm ³
Packaging Unit Carton	1	0.30	45.30	14.50	14.30	9,392.96
Packaging Unit Inside	1	0.30	46.50	15.50	15.50	11,171.60
Packaging Unit Single	1	0.30	28.00	2.20	5.70	351.12
Net single without Packaging	1	0.14	27.60	1.50	4.70	0.00

Safety notes

- Avoid direct contact with light sources: Fiber optic cables, especially those with active light sources such as lasers (e.g. in optical communication systems), can emit dangerous radiation that can damage eyes. Take care never to look directly into the light of an optical fiber, even if the light source is invisible to the naked eye.
- When working with fiber optic cables, especially during tests or when working with lasers, protective goggles should always be worn to protect against harmful radiation.
- When plugging and unplugging the cable, only grasp the plug and do not pull directly on the cable.
- Do not kink or crush: Fiber optic cables are sensitive to mechanical stress.
- To protect cables from physical damage, they should be laid in special ducts or with protective materials
- Keep cable connectors clean: Fiber optic cables are sensitive to dust and dirt. Even small particles on the connectors can severely impair the signal quality.
- Cables should not be used in environments with extremely high or very low temperatures. Observe the product information on the maximum operating temperature of the cable
- Check cables regularly for visible damage such as cracks, kinks or signs of wear. Defective cables should be replaced immediately.

EU responsible person

EU based economic operator ensuring the product complies with the required regulations.

ASSMANN Electronic GmbH
Auf dem Schüffel 3
Lüdenscheid, Germany
<https://www.assmann.com>
info@assmann.com