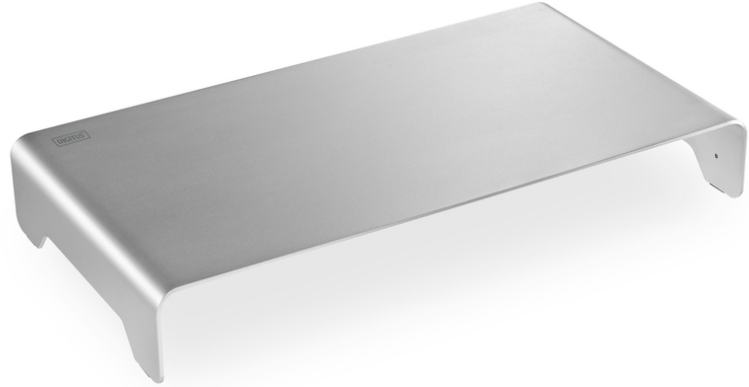


## DIGITUS®

DA-90369

EAN 4016032456056



### Slim Aluminium Monitor Riser silver

Digitus Slim Aluminium Monitor Riser silver is a sleek, modern desk accessory designed to elevate your monitor and keyboard. It features a minimalist design with a brushed aluminum finish, providing a professional look to your workspace. The riser is compatible with monitors up to 32 inches wide and 11 to 32 inches high. It also includes a dedicated slot for your keyboard and mouse, keeping your desk organized and clutter-free. The riser is made of high-quality aluminum, ensuring durability and stability. Its slim profile (only 0.5 inches high) makes it a perfect choice for those looking to save desk space while maintaining an ergonomic setup. The riser is easy to assemble and disassemble, making it a convenient addition to any desk. It is suitable for both home and office environments, adding a touch of elegance to your workstation.

- Slim design, only 0.5 inches high
- Compatible with monitors up to 32 inches wide
- Compatible with monitors up to 11" - 32" high
- Includes a dedicated slot for keyboard and mouse
- Made of high-quality aluminum
- Easy to assemble and disassemble

• Dimensions: 40 x 21 x 6.3 cm

• Weight: 1.25 kg

• Height: 0.5 inches

#### Attributes

- Style: Monitor Riser

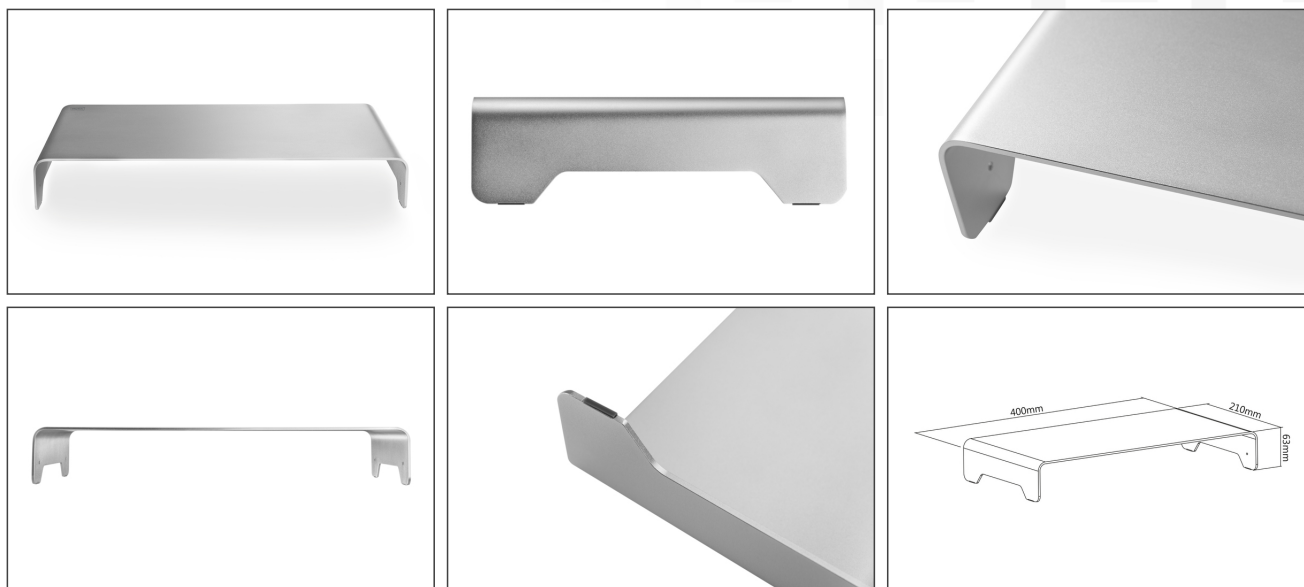
#### Package contents

- 1 Slim Aluminium Monitor Riser silver
- 1 Keyboard and Mouse Tray

Logistics						
	Number (pcs)	Weight (kg)	Depth (cm)	Width (cm)	Height (cm)	cm <sup>3</sup>
Packaging Unit Carton	10	12.50	38.20	43.50	49.00	81,423.30
Packaging Unit Inside	1	1.25	23.50	42.00	7.20	7,106.40
Packaging Unit Single	1	1.25	23.50	42.00	7.20	7,106.40
Net single without Packaging	1	0.81	21.00	40.00	6.30	0.00

### More images:





#### Safety notes

- Please read the entire manual before starting assembly and installation. Please contact your local dealer if you have any questions about the instructions or warnings.
- CAUTION: Use with products that exceed the permitted weight may result in damage or possible injury.
- Brackets should be fitted in accordance with the installation instructions. Incorrect installation can result in damage or injury.
- Use safety equipment and suitable tools. The product should only be installed by specialists.
- This product can be installed on timber-framed, solid concrete or stone walls.
- The load-bearing surfaces should be able to safely withstand the entire weight of appliances and all additional components.
- Only use the installation screws supplied and DO NOT TIGHTEN the screws TOO TIGHT.
- This product contains small parts that can cause a choking hazard if swallowed. Keep these parts away from children.
- Only use this product indoors. Using the product outdoors can lead to injuries and damage.
- IMPORTANT: Before installation, please check all components received against the components list. If parts are damaged or missing, ask your local dealer for replacement parts.
- MAINTENANCE: Check the bracket regularly for safety and stability (preferably every three months).

#### EU responsible person

EU based economic operator ensuring the product complies with the required regulations.

ASSMANN Electronic GmbH  
Auf dem Schüffel 3  
Lüdenscheid, Germany  
<https://www.assmann.com>  
[info@assmann.com](mailto:info@assmann.com)