

DIGITUS® Comutador de rede Gigabit Ethernet de 8 portas, industrial, não gerido

DN-651108

EAN 4016032454489



Comutador Ethernet Gigabit industrial 8 portas, calha DIN, gama de temperaturas alargada

O Interruptor Gigabit Industrial DIGITUS® foi concebido para ambientes agressivos onde estão expostos à humidade, flutuações de temperatura e vibrações. Com uma gama de temperaturas de -40°C a 75°C, o Comutador Gigabit Industrial pode ser utilizado nas condições mais adversas. A disponibilidade constante é garantida em áreas altamente sensíveis, como os transportes, a produção, o tráfego e a vigilância de segurança. Graças ao sistema simples plug-and-play, o Industrial Gigabit Switch pode ser rapidamente integrado no respetivo ambiente. A conectividade Gigabit faz do Industrial Gigabit Switch uma solução flexível e económica para ambientes industriais.

- 8 x 10/100/1000Base-TX portas Ethernet
- Detecção automática de cabos - Função Auto MDI / MDI-X
- Normas suportadas: IEEE 802.3 10BaseT, IEEE 802.3u 100BaseTX, IEEE 802.3ab Gigabit Ethernet
- Controlo de fluxo e contrapressão IEEE802.3x
- Tecnologia store-and-forward para uma transferência de dados optimizada
- Detecção/definição automática de velocidade e half/full duplex
- Placa traseira com 16Gbps
- Suporta até 8K endereços MAC
- Caixa metálica compacta e robusta
- Excelente proteção contra curto-circuitos
- Proteção contra raios e sobretensões

- Fonte de alimentação redundante: DC 12 - 56 V, fonte de alimentação redundante com função de proteção contra inversão de polaridade
- Gama de temperaturas de funcionamento alargada, -40 °C ~ +75 °C
- Ligação de terminal amovível
- Consumo de energia: 5 W
- MTBF: 500.000 horas
- EN 50155 (EN 60068-2-6) Vibração
- EN 50155 (EN 60068-2-27) Choque
- EN 50155 (EN 60068-2-32) Queda livre

Attributes

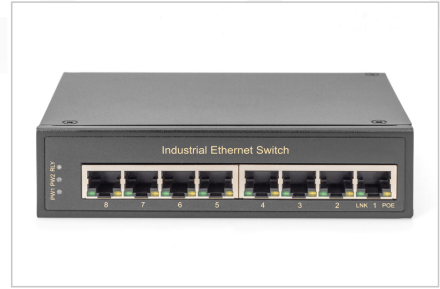
- Number of ports: 8
- Ethernet speed: Gigabit
- Industrial usage: yes
- Installation type: DIN rail
- Managed: no
- Outdoorsuitable: no
- PoE (Power over Ethernet): no
- Protection against vandalism: no
- VLAN: no

Package contents

- Switch Gigabit industrial de 8 portas
- Guia de início rápido

Logistics						
	Number (pcs)	Weight (kg)	Depth (cm)	Width (cm)	Height (cm)	cm ³
Packaging Unit Carton	16	12.60	35.00	24.00	56.00	47,040.00
Packaging Unit Inside	16	12.60	35.00	24.00	56.00	47,040.00
Packaging Unit Single	1	0.79	16.50	6.50	21.50	2,305.88
Net single without Packaging	1	0.52	10.50	3.60	14.20	0.00

More images:



Safety notes

- This product is intended for indoor use only.
- Read all instructions and follow all warnings and instructions on the device.
- Do not place this appliance on an unstable surface (such as a trolley, stand, table, etc.).
- Do not use this appliance near water.
- Do not place this appliance near or above a radiator.
- The housing is equipped with openings for heat dissipation and ventilation. To prevent overheating during operation, the ventilation openings must not be blocked or covered.
- Do not place the appliance on a soft surface (e.g. bed, sofa, blanket, etc.). This will block the ventilation.
- The appliance must not be installed in a closed environment if adequate ventilation is not guaranteed.
- Do not spray any liquids onto the appliance.
- Disconnect the mains plug before cleaning. Do not use any liquid or foam cleaners.
- Clean the appliance with a damp cloth.
- Connect the device according to the power supply on the rating plate.
- To prevent damage to the appliance, it is important that all appliances are properly earthed.
- Do not place any objects on the power cable and lay it in such a way as to avoid tripping hazards.
- Use a surge protector, a regulator or an uninterruptible power supply (UPS) to protect your system from sudden, temporary and reduced power.
- Secure the system cable and mains cable properly and ensure that no objects are pressing on the cable.
- Do not insert any objects into the appliance through the openings in the housing. There is a risk of a short circuit, which can lead to fire or electric shock.
- Do not attempt to repair the appliance yourself. Always contact an authorized customer service centre.
- If any of the following conditions occur, unplug the appliance and send it to an authorized service centre for repair
 - The mains cable, power supply unit or plug for the power supply is damaged or worn;
 - Liquid has penetrated the appliance;
 - The device has been exposed to rain or water;
 - The device has been dropped or the housing has been damaged;
 - The function of the device has obviously changed;
- The appliance cannot be operated as described in the operating instructions.

EU responsible person

EU based economic operator ensuring the product complies with the required regulations.

ASSMANN Electronic GmbH
 Auf dem Schüffel 3
 Lüdenscheid, Germany
<https://www.assmann.com>
info@assmann.com