

# DIGITUS® 17" LCD KVM Console, 1-Port VGA, spanish Keyboard

DS-72210-1ES

EAN 4016032449416



**Modularized 43,2cm (17") TFT console with 1 port KVM, ES keyboard, RAL 9005 black**

Due to its modular design, the DIGITUS® 17" TFT console offers a multitude of individual configuration possibilities, so that it can be adjusted to the area in which the console is being used. As a result, the console is economical and can be upgraded and/or converted at any time with further modules. Due to the flexible configuration, a high level of future security of the console is thus guaranteed. The modular console consists of a 17" monitor, 1-port KVM switch, keyboard and the touchpad.

**Highest degree of flexibility during the administration of the server farm**

- TFT monitor 43.2 cm (17"), with anti-reflective, break-proof protective glass screen
- Resolution: 1280x1024 at 60 Hz
- Console creates up to 85% more space
- Contrast ratio: 1000:1
- Supports: 16.7 M colors
- Including 1-port KVM switch
- Including spanish keyboard

- Mouse touch-board with two function keys
- The console can be completely extracted from the server cabinet, and the TFT screen can be tilted through 120 degrees
- Gross weight: 19,15 kg
- The consoles have safety locking in order to prevent damage
- Space-saving housing (1U), black (RAL 9005)

**Attributes**

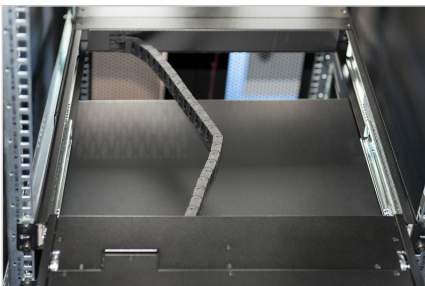
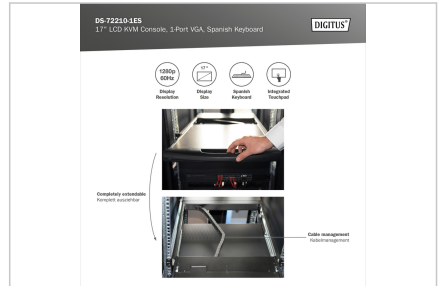
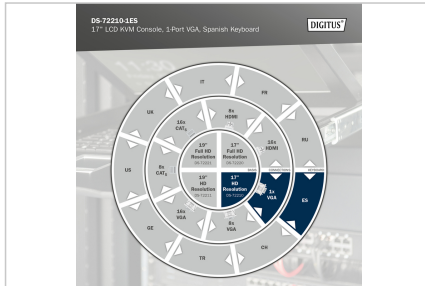
- Cascading possible: yes
- Interface: VGA
- Keyboard Layout: ES
- Number of ports: 1
- Screen size: 17 inch

**Package contents**

- Modular 17" console
- 1-port KVM switch
- Keyboard
- Quick start guide
- Power adapter
- Mounting material

Logistics						
	Number (pcs)	Weight (kg)	Depth (cm)	Width (cm)	Height (cm)	cm <sup>3</sup>
Packaging Unit Carton	1	23.36	81.00	70.50	19.50	111,355.00
Packaging Unit Inside	1	23.36	81.00	70.50	19.50	111,355.00
Packaging Unit Single	1	23.36	81.00	70.50	19.50	111,355.00
Net single without Packaging	1	12.54	70.50	48.00	4.50	0.00

More images:



Safety notes

- This product is intended for indoor use only.
- Read all instructions.
- Follow all warnings and instructions on the device.
- Do not place this appliance on an unstable surface (such as a trolley, stand, table, etc.).
- If this appliance falls, it can cause serious damage.
- Do not use this appliance near water.
- Do not place this appliance near or above a radiator.
- The housing is equipped with openings for heat dissipation and ventilation. To prevent overheating during operation, the ventilation openings must not be blocked or covered.
- Do not place the appliance on a soft surface (e.g. bed, sofa, blanket, etc.). This will block the ventilation.
- The appliance must not be installed in a closed environment if adequate ventilation is not guaranteed.
- Do not spray any liquids onto the appliance.
- Disconnect the mains plug before cleaning. Do not use any liquid or foam cleaners.
- Clean the appliance with a damp cloth.
- Connect the device according to the power supply on the rating plate.
- This device is designed for the IT distribution system with 100 V - 230 V voltage.
- To prevent damage to the appliance, it is important that all appliances are properly earthed.
- Do not place any objects on the power cable and lay it in such a way as to avoid tripping hazards.
- If an extension cable is used for the appliance, make sure that the total capacity of all products using the cable does not exceed the current load.
- Ensure that the total current of all products connected to the socket does not exceed 15 A.

- Use a surge protector, a regulator or an uninterruptible power supply (UPS) to protect your system from sudden, temporary and reduced power.
- Secure the system cable and mains cable properly and ensure that no objects are pressing on the cable.
- Do not insert any objects into the appliance through the openings in the housing. There is a risk of a short circuit, which can lead to fire or electric shock.
- Do not attempt to repair the appliance yourself. Always contact an authorized customer service centre.
- If any of the following conditions occur, unplug the appliance and send it to an authorized service centre for repair
- The mains cable or plug is damaged or worn;
- Liquid has penetrated the appliance;
- The device has been exposed to rain or water;
- The device has been dropped or the housing has been damaged;
- The function of the device has obviously changed;
- The appliance cannot be operated as described in the operating instructions.

**EU responsible person**

EU based economic operator ensuring the product complies with the required regulations.

ASSMANN Electronic GmbH  
Auf dem Schüffel 3  
Lüdenscheid, Germany  
<https://www.assmann.com>  
[info@assmann.com](mailto:info@assmann.com)