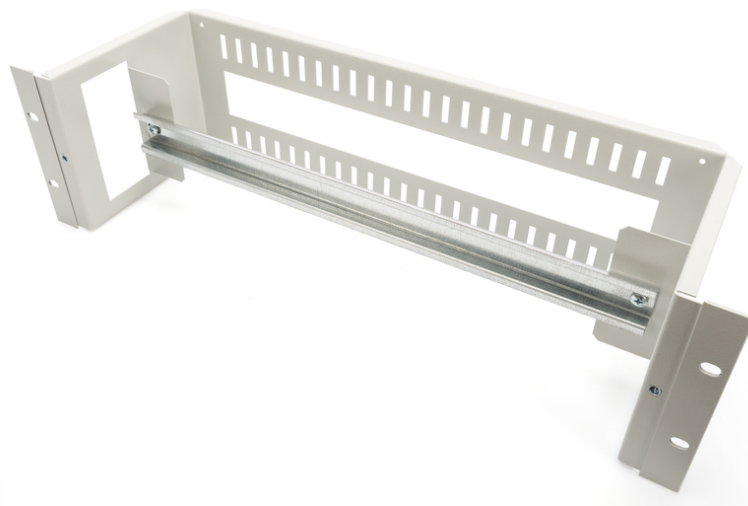


# DIGITUS® Painel de calha DIN de montagem em bastidor de 482,6 mm (19"), 3U

DN-19-DIN-3U

EAN 4016032447870



**Suporte de calha top-hat, 3U, 135x480x150 mm incl. calha superior (35x390 mm), cinzento (RAL 7035)**

O painel de calha DIN de 482,6 mm (19") para montagem em rack (35 mm, top-hat) oferece 3 unidades de altura para montagem de dispositivos de calha top-hat numa calha top-hat integrada com uma largura de 390 mm. Uma abertura de 40x35 mm na parte traseira serve como passagem de cabos.

- Chapa de aço com 1,5 - 2,0 mm de espessura, revestida a pó

#### Attributes

- Color: light grey, RAL 7035
- Units: 3
- Weight: 2.5 kg

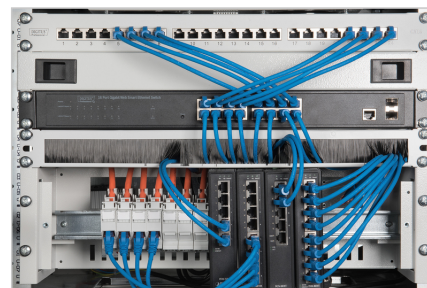
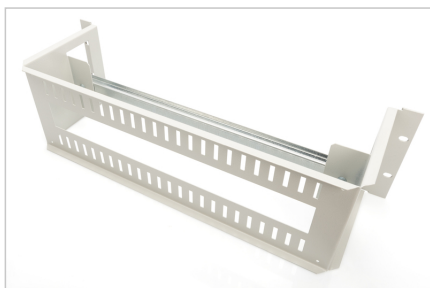
#### Package contents

- Conjunto de instalação (parafusos, porcas de caixa, anilhas)

#### Logistics

	Number (pcs)	Weight (kg)	Depth (cm)	Width (cm)	Height (cm)	cm <sup>3</sup>
Packaging Unit Carton	1	2.80	20.00	52.00	20.00	20,800.00
Packaging Unit Inside	1	2.80	20.00	52.00	20.00	20,800.00
Packaging Unit Single	1	2.80	20.00	52.00	20.00	20,800.00
Net single without Packaging	1	2.50	15.00	48.00	13.50	0.00

#### More images:



**Safety notes**

- When installing and using the accessory product for network cabinets, observe the respective safety instructions of the manufacturer or the cabinet system in which you want to use the accessory.

**EU responsible person**

EU based economic operator ensuring the product complies with the required regulations.

ASSMANN Electronic GmbH  
Auf dem Schüffel 3  
Lüdenscheid, Germany  
<https://www.assmann.com>  
[info@assmann.com](mailto:info@assmann.com)