

# Digitus® CAT 6A, Class EA High Density Patch Panel, shielded

DN-91624S-SL-EA-G  
EAN 4016032444848



## CAT 6A EA patch panel, shielded, 24-port RJ45 dust cover, 8P8C, 0.5U, grey RAL 7035

The DIGITUS® 24-port patch panel offers a very high packing density with only 0.5 U. This means that up to 48 ports can be implemented on 1 U with two 0.5 U panels. The patch panel is shielded and equipped with dust protection caps on the RJ45 sockets. The 360° shield contact of the cables ensures the best performance characteristics. The quick-release fastener on the housing ensures easy and tool-free access to the LSA cutting terminals.

### Very space-saving (only 0.5U) - With dust protection caps - Future-oriented standards and high-end quality for your network

- Transmission characteristics: Category 6A, class EA
- Application areas: Up to 500 MHz, 10GBase-T
- Standards: ISO/IEC 11801 2nd Ed., EN 50173-1, EIA/TIA 568-C, 802.3af, 802.3at PoE+
- General properties:
- Suitable for 483 mm (19") rack mounting
- RJ45 sockets, 8P8C
- Cable installation via LSA strips, color-coded according to EIA/TIA 568 A & B
- Cable fixing by means of quick latches
- Central earthing connection
- 360° shield contacting
- Integrated dust protection flap
- Mechanical properties:
- Housing material: 1.5 mm galvanized, cold-rolled steel according to EN1.4301, UNS S30400, AISI 304 and LMSAD110

- RJ45 socket material: ABS UL 94V-0
- Contact RJ45 socket: Nickel-plated phosphor bronze, 0.5 mm gold-plated contact
- RJ-45 shielding: Nickel-plated bronze
- LSA cutting clamp: Krone LSA+, UL 94V-2, galvanized phosphor bronze
- Earthing wire: Not included in the scope of delivery
- Printed circuit board: FR4, UL 94V-0
- Physical properties:
- Insertion force: 30N max. (IEC 60603-7-5)
- Tensile load: 7.7 kg between socket and plug
- Operating temperature: -20° C to +70 °C (ISO/IEC 11801, EN 50173-1, ANSI/TIA/EIA 568 C)
- Socket mating cycle: > 750 acc. to ISO/IEC 11801, IEC 60603-7-5
- Terminal: > 200 acc. to ISO/IEC 11801, IEC 60603-7-5
- Core receptacle: 22-26 AWG solid and stranded conductors
- Insulation resistance: > 500 MOhm
- Contact resistance: < 20 milliOhm
- Dielectric strength: 1000 VDC (contact/contact), 1500 VDC (contact/ground)
- HE: 0.5

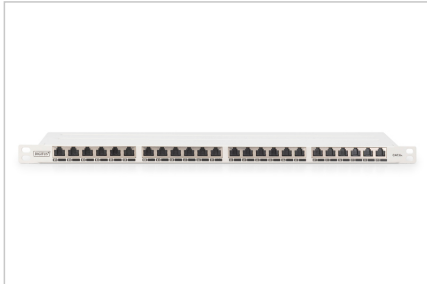
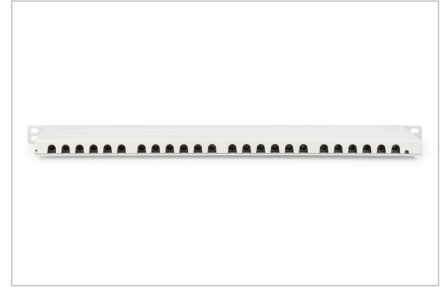
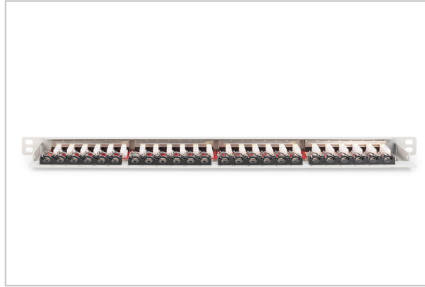
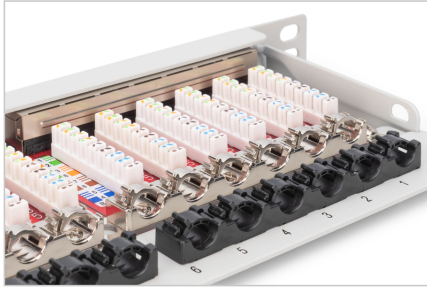
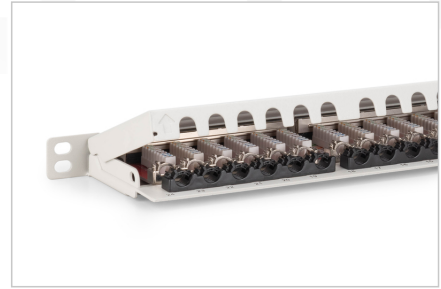
### Attributes

- Color: light grey, RAL 7035
- Ports: 24
- Units: 0
- Category: CAT 6A

## Logistics

	Number (pcs)	Weight (kg)	Depth (cm)	Width (cm)	Height (cm)	cm³
Packaging Unit Carton	10	9.80	25.00	54.00	23.00	31,050.00
Packaging Unit Inside	1	0.98	13.00	51.50	3.50	2,343.25
Packaging Unit Single	1	0.98	13.00	51.50	3.50	2,343.25
Net single without Packaging	1	1.10	9.60	48.30	2.20	0.00

**More images:**



**Safety notes**

- Protect product from moisture
- Avoid antistatic charging when installing the product
- Observe the specifications of the raw cable manufacturer during installation

**EU responsible person**

EU based economic operator ensuring the product complies with the required regulations.

ASSMANN Electronic GmbH  
Auf dem Schüffel 3  
Lüdenscheid, Germany  
<https://www.assmann.com>  
[info@assmann.com](mailto:info@assmann.com)