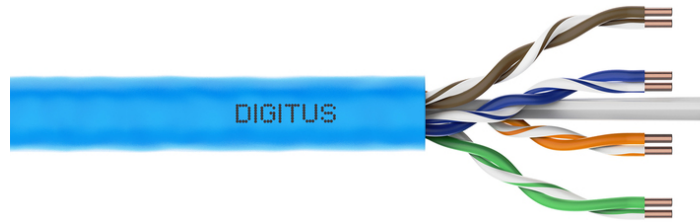


# DIGITUS® CAT 6A U/UTP installation cable, 500 m, simplex, Dca

DK-1614-A-VH-5

EAN 4016032441885



## CAT 6A U-UTP installation cable, 500 MHz Dca (EN 50575), AWG 23/1, 500 m drum, sx, blue

DIGITUS® Category 6A U-UTP installation cables are manufactured and tested to the ISO/IEC 11801, TIA/-586-C.2 and EN 50173 Category 6A specifications. Every cord consists of 8 color coded AWG 23 polyethylene insulated conductors. The conductors are twisted together to form 4 pairs with varying lay lengths. Printing details along the outer sheath includes the brand name and item code. The cable is packed in a paper pullout box which makes the installation easy.

### Future-oriented standards and high-end quality for your network.

- Physical properties:
- Conductor: Bare annealed copper, olid AWG 23/1
- Insulation: HD-PE (High Density Polyethylene)
- Total number of insulated conductors: 8, twisted in 4 pairs
- Color code: Blue-white, orange-white, green-white, brown-white
- Individual pair shield: None
- Overall shielding: None
- Outer sheath: Dca to B2ca acc. to EN 50575; LSZH
- Outer sheath diameter (nominal): 0,5 mm (Eca); 0,6 mm (Dca); 1,2 mm (Cca); 1,4 mm (B2ca)
- Outer sheath color: Light blue (RAL 5012)
- Mechanical properties:
- Tensile loading: 150N max.
- Dynamic bending radius: 8x AD mm min.
- Static bending radius: 4x AD mm min.
- Shipping- and storage temperature range: -20 °C up to +60 °C

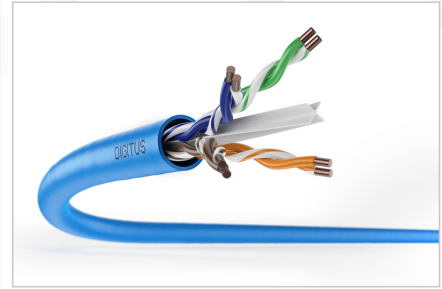
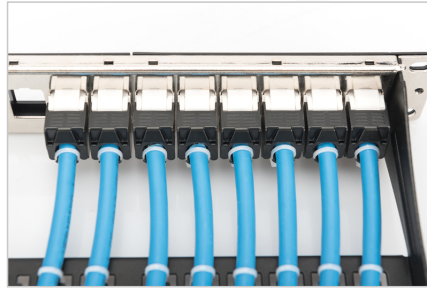
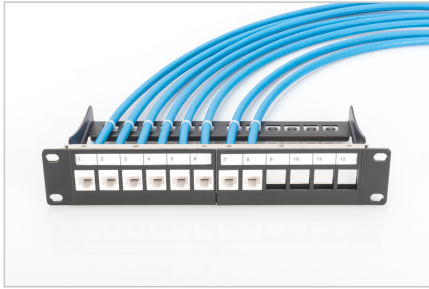
- Operating temperature range: -20 °C up to +75 °C
- Installation temperature range: 0 °C up to +50 °C
- Overall diameter Simplex (nominal): 7,1 mm (Eca); 7,3 mm (Dca); 7,4 mm (Cca); 7,6 mm (B2ca)
- Weight (kg/km): 53 kg (Eca); 54 kg (Dca); 55 kg (Cca); 56 kg (B2ca)
- Electrical properties:
- Impedance: 100±50hm @ 1 - 600MHz
- Capacitance: 40 pF/m nominal @ 1 KHz
- Capacitance unbalance (pair-ground): 1.6 pF/m max. @ 1 KHz
- Insulation resistance: 5 GOhm x km min.
- DC loop resistance: 147 Ohm/km max. (2% max. resistance unbalance)
- Voltage resistance: 72 Vdc max.
- Coupling attenuation: CA-Type 2
- Signal propagation delay: 450 nS/100 m max.
- Propagation delay: 10 nS/100 m max.
- Separating class: "c" acc. to EN 50174-2
- NVP: 70%

### Attributes

- Category: CAT 6A
- Shielding: U-UTP, unshielded
- CPR: Dca
- Length: 500 m
- Color: light-blue
- Jacket: LSOH
- Structure: 4 x 2 AWG 23/1, solid twisted pair

Logistics						
	Number (pcs)	Weight (kg)	Depth (cm)	Width (cm)	Height (cm)	cm³
Packaging Unit Carton	1	27.50	50.00	50.00	22.00	55,000.00
Packaging Unit Inside	1	27.50	50.00	50.00	22.00	55,000.00
Packaging Unit Single	1	27.50	50.00	50.00	22.00	55,000.00
Net single without Packaging	1	27.50	0.00	0.00	0.00	0.00

More images:



**DIGITUS**

AWG 23/1  
500 MHz  
10 Gbit Ethernet  
20°/75°  
LSZH  
D Ca  
Cat 6a  
CPL class

**CAT 6a U/UTP Installation Cable, 500m, Simplex, D<sub>Ca</sub>**

**DIGITUS**

DK-1614-A-VH-S // CAT 6<sub>a</sub> U/UTP Installation Cable, 500m, Simplex, D<sub>a</sub>

Anwendungsbeispiel  
Example of use

**DIGITUS**

DK-1614-A-VH-S // CAT 6<sub>a</sub> U/UTP Installation Cable, 500m, Simplex, D<sub>a</sub>

Kabelquerschnitt  
Cable cross section

**DIGITUS**

Produktinformationen / Product Information	Physikalische Spezifikationen / Physical Properties
<b>Bestandteile / Components</b>	<b>Materialien / Materials</b>
<b>Technische Spezifikationen / Technical Specifications</b>	<b>Umweltbedingungen / Environmental Conditions</b>
<b>Zusätzliche Informationen / Additional Information</b>	<b>Abmessungen / Dimensions</b>

**DIGITUS**

Leistungsmerkmale / Transmission Properties

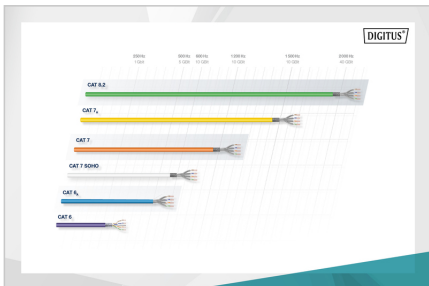
Strecke / Length	100BASE-T1	100BASE-T2	100BASE-T4	100BASE-T5	100BASE-T6	100BASE-T7	100BASE-T8
100m	100	100	100	100	100	100	100
150m	100	100	100	100	100	100	100
200m	100	100	100	100	100	100	100
250m	100	100	100	100	100	100	100
300m	100	100	100	100	100	100	100
350m	100	100	100	100	100	100	100
400m	100	100	100	100	100	100	100
450m	100	100	100	100	100	100	100
500m	100	100	100	100	100	100	100

**Compliance Statement** No. 2020-530

Hersteller / Manufacturer: Digitus

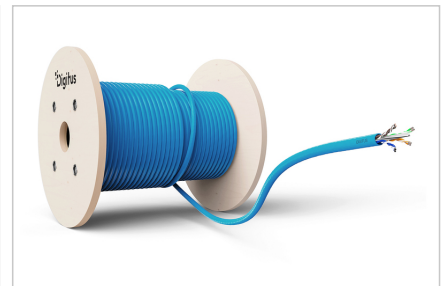
Produktname / Product Name: CAT 6a U/UTP Installation Cable

CE, RoHS, REACH, Intertek, ETL logos and certification details.



**DIGITUS**

CE, RoHS, REACH, Intertek, ETL logos and certification details.



**Safety notes**

- Data cables must not be bent, stretched or twisted excessively. Sharp bends can damage the cable sheath and lead to failures or short circuits.
- Installation only by trained specialists.
- Installation only in dry rooms.
- The data cable must not be in direct contact with other electrical cables or high-voltage sources in order to avoid electromagnetic interference.

**EU responsible person**

EU based economic operator ensuring the product complies with the required regulations.

ASSMANN Electronic GmbH  
 Auf dem Schüffel 3  
 Lüdenscheid, Germany  
<https://www.assmann.com>  
[info@assmann.com](mailto:info@assmann.com)