

# DIGITUS® CAT 6A U/FTP installation cable, 100 m, simplex, B2ca

DK-1626-A-VH-1

EAN 4016032441823



## CAT 6A U-FTP installation cable, 500 MHz B2ca (EN 50575), AWG 23/1, 100 m paper box,

The Digitus® Cat.6A U/FTP installation cable is characterized by the following cable construction 4x2x AWG23/1 and reaches a transmission frequency up to 500 MHz. The halogen free cable jacket is conform to the standard IEC 60332-1, FRNC-B, LSZH-1 and CPR Euro class B2ca. The cable is suitable for building structured cabling in the secondary and tertiary area. Compliant with the following standards ISO/IEC 11801, DIN EN 50173, DIN EN 50288-10-1.

### Future-oriented standards and high-end quality for your network.

- Physical properties:
- Conductor: Bare annealed copper, solid AWG 23/1
- System/s of AVCP: AVCP 3
- Total number of insulated conductors: 8, twisted in 4 pairs
- Color code: Blue-white, orange-white, green-white, brown-white
- Individual pair shielding: Aluminum foil, providing 100 % coverage
- Overall shielding: None, with drain wire
- Outer sheath: Eca to B2ca acc. to EN 50575; LSZH
- Outer sheath color: Light blue (RAL 5012)
- Mechanical properties:
- Tensile loading: 150N max.
- Dynamic bending radius: 8x AD mm min.
- Static bending radius: 4x AD mm min.
- Shipping- and storage temperature range: -20 °C up to +60 °C
- Operating temperature range: -20 °C up to +75 °C

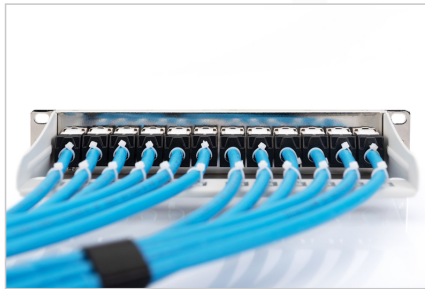
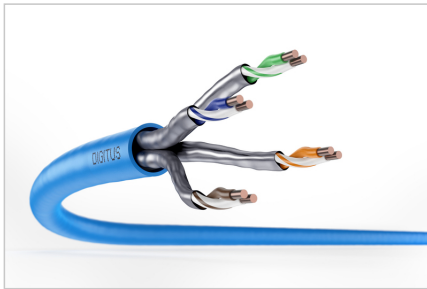
- Installation temperature range: 0 °C up to +50 °C
- Overall diameter Simplex (nominal): 7.0 (Eca); 7,2 mm (Dca); 7,6 mm (Cca); 7,6 mm (B2ca)
- Weight (kg/km): 56 kg (Eca); 57 kg (Dca); 58 kg (Cca); 58 kg (B2ca)
- Electrical properties:
- Impedance: 100±15 Ohm @ 4 - 100MHz; 100±25 Ohm @100-500 MHz
- Capacitance: 45 pF/m nominal @ 1KHz
- Capacitance unbalance (pair-ground): 1.6 pF/m max. @ 1 KHz
- Insulation resistance: 5 GOhm x km min.
- DC loop resistance: 190 Ohm/km max. (2% max. resistance unbalance)
- Voltage resistance: 72 Vdc max.
- Coupling attenuation: CA-Type 2
- Signal propagation delay: 450 nS/100 m max.
- Propagation delay: 15 nS/100 m max.
- Separating class: "c" acc. to EN 50174-2
- NVP: 70%

### Attributes

- Assortment: Twisted Pair Installation Cables
- Category: CAT 6A
- Shielding: U-FTP, pairs in metal foil
- CPR: B2ca
- Length: 100 m
- Color: light-blue
- Jacket: LSOH
- Structure: 4 x 2 AWG 23/1, solid twisted pair

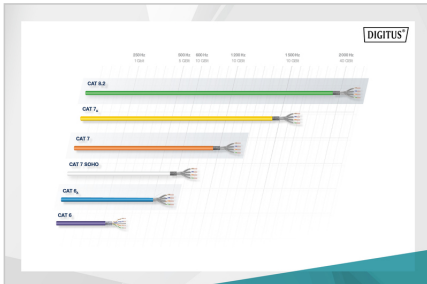
Logistics						
	Number (pcs)	Weight (kg)	Depth (cm)	Width (cm)	Height (cm)	cm³
Packaging Unit Carton	1	5.50	33.00	33.00	12.00	13,068.00
Packaging Unit Inside	1	5.50	0.00	0.00	0.00	0.00
Packaging Unit Single	1	5.50	33.00	33.00	12.00	13,068.00
Net single without Packaging	1	0.00	0.00	0.00	0.00	0.00

More images:



**Leistungsparameter Transmission Properties**

PROG.	JIT	MCST	PK-MOJ	AJZ	PK-GR	TK	SLKST	PK-SUM
1.1	32	36	40	44	48	52	56	60
1.2	32	36	40	44	48	52	56	60
1.3	32	36	40	44	48	52	56	60
1.4	32	36	40	44	48	52	56	60
1.5	32	36	40	44	48	52	56	60
1.6	32	36	40	44	48	52	56	60
1.7	32	36	40	44	48	52	56	60
1.8	32	36	40	44	48	52	56	60

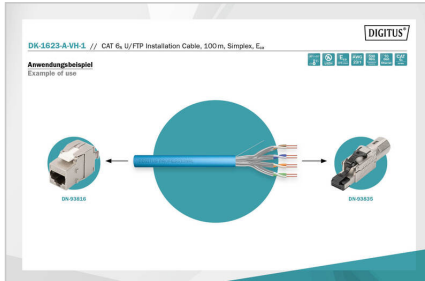
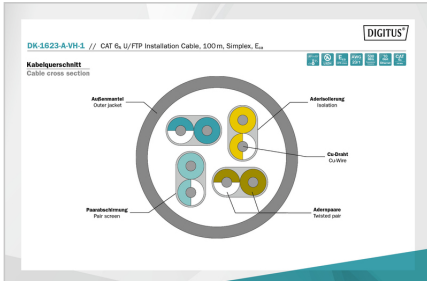


**CEC System**

CEC System	Standard	Leistungsfähigkeit (MHz)	Adaptation an verschiedene Stecker	Standardisierung
B2ca	Shielded Twisted Pair	1+	• Typischerweise • 1000MHz • 1000MHz • 1000MHz	Standardisierung • 1000MHz • 1000MHz • 1000MHz
Cca	Shielded Twisted Pair	3	• Typischerweise • 1000MHz • 1000MHz	Standardisierung • 1000MHz • 1000MHz • 1000MHz
Dca	Shielded Twisted Pair	3	• Typischerweise • 1000MHz • 1000MHz	Standardisierung • 1000MHz • 1000MHz • 1000MHz
Eca	Shielded Twisted Pair	3	• Typischerweise • 1000MHz • 1000MHz	Standardisierung • 1000MHz • 1000MHz • 1000MHz

**Produktinformation Product Information**

Produktinformation Product Information	Physikalische Spezifikationen Physical Properties
<p><b>AWG 23/1</b></p> <p><b>500 MHz</b></p> <p><b>10 Gbit Ethernet</b></p> <p><b>CAT 6a</b></p> <p><b>100 m</b></p> <p><b>Eca</b></p> <p><b>LSZH</b></p> <p><b>CPR class</b></p>	<p>Standardisierung • 1000MHz • 1000MHz • 1000MHz</p> <p>Standardisierung • 1000MHz • 1000MHz • 1000MHz</p>



**CAT 6A U/FTP Installation Cable, 100 m, Simplex, Eca**

AWG 23/1, 500 MHz, 10 Gbit Ethernet, CAT 6a, 100 m, Eca, LSZH, CPR class.



Safety notes

- Data cables must not be bent, stretched or twisted excessively. Sharp bends can damage the cable sheath and lead to failures or short circuits.
- Installation only by trained specialists.
- Installation only in dry rooms.
- The data cable must not be in direct contact with other electrical cables or high-voltage sources in order to avoid electromagnetic interference.

**EU responsible person**

EU based economic operator ensuring the product complies with the required regulations.

ASSMANN Electronic GmbH  
Auf dem Schüffel 3  
Lüdenscheid, Germany  
<https://www.assmann.com>  
[info@assmann.com](mailto:info@assmann.com)