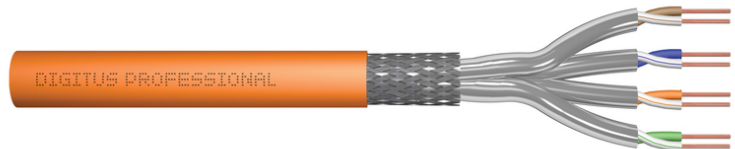


# DIGITUS® CAT 7 S/FTP data cable - installation cable, 500 m, simplex, Cca-sla d1 a1

DK-1744-VH-5

EAN 4016032441731



## CAT 7 S-FTP installation cable, 1200 MHz Cca (EN 50575), AWG 23/1, 500 m drum, simplex, or

The Digitus Cat 7 installation cable is designed for use in structured data centers and building cabling in accordance with ISO/IEC 11801, DIN EN 50288-4-1, DIN EN 50173, IEC 60332-3-24, EN 50575. The cable is ideal for the transmission of analog and digital data and supports PoE, PoE+, 4PPoE (IEEE 802.3af;3at;3bt). The shield structure consists of individually shielded pairs with a tinned copper braid, which ensures excellent shielding and electrical values.

### Future-oriented standards and high-end quality for your network.

- Physical properties:
- Conductor: Bare copper wire, AWG 23/1
- Insulation: SFS-PE (foamed polyethylene jacket)
- Total number of insulated conductors: 8, twisted into 4 pairs
- Color code: Blue-white, orange-white, green-white, brown-white
- Shielding of the individual pairs: aluminum-laminated polyester film, covers 100%
- Overall shielding: copper braiding
- Outer sheath: Cca-sla d1 a1 according to EN 50575; LSZH
- Outer sheath thickness (nominal): 0.50 mm (Eca); 0.52 mm (Dca); 0.60 mm (Cca); 0.60 (B2ca)
- Color: Orange (RAL 2008)
- Mechanical properties:
- Strain relief: 150N max.
- Dynamic bending radius: 8x AD mm min.
- Static bending radius: 4x AD mm min.

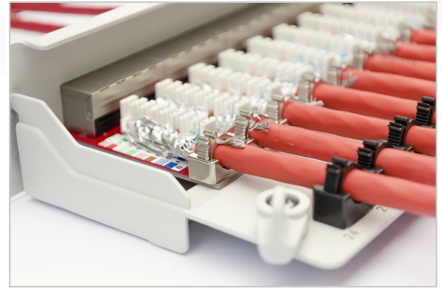
- Transport and storage temperature range: -20 °C to +60 °C
- Operating temperature range: -20 °C to +50 °C
- Installation temperature range: 0 °C to +50 °C
- Electrical properties:
- Impedance: 100±15 Ohm @ 4 - 1000 MHz; 100±25 OHM @ 100-600 MHz
- Capacitance: 45 pF/m nominal @ 1KHz
- Capacitance unbalance (pair-earth): 1.6 pF/m max. @ 1 KHz
- Insulation resistance: 5 GOhm x km min.
- DC resistance: 95 Ohm/km max. (2% max. unbalanced resistance)
- Loop resistance: 190 Ohm/km max. (2% max. unbalanced resistance)
- Operating voltage: 72 Vdc max.
- Coupling attenuation: CA-Type 1b
- Phase delay: 450 nS/100 m max.
- Time delay: 10 nS/100 m max.
- Separation class: "d" according to EN 50174-2
- NVP: 79%
- Flame spread: EN 60332-3-24 (LSOH-PVC)

### Attributes

- Assortment: Twisted Pair Installation Cables
- Category: CAT 7
- Shielding: S-FTP, pairs in metal foil and braid shielding
- CPR: Cca
- Length: 500 m
- Color: orange
- Jacket: LSOH
- Structure: 4 x 2 AWG 23/1, solid twisted pair

Logistics						
	Number (pcs)	Weight (kg)	Depth (cm)	Width (cm)	Height (cm)	cm³
Packaging Unit Carton	1	27.00	54.00	54.00	34.00	99,144.00
Packaging Unit Inside	1	27.00	54.00	54.00	34.00	99,144.00
Packaging Unit Single	1	27.00	54.00	54.00	34.00	99,144.00
Net single without Packaging	1	55.00	54.00	54.00	34.00	0.00

More images:



**DIGITUS**

AWG 23/1 | 1200 MHz | 10 Gbit Ethernet | CAT 7 | 1000 m

20/7+50° | LSZH | C Ca | CPE class

**CAT 7 S/FTP Installation Cable, 500 m, Simplex, C<sub>Ca</sub>**

**DIGITUS**

DK.1744-VH-5 // CAT 7 S/FTP Installation Cable, 500m, Simplex, C<sub>Ca</sub>

Anwendungsbeispiel  
Example of use

**DIGITUS**

DK.1744-VH-10 // CAT 7 S/FTP Installation Cable, 1000m, Simplex, D<sub>Ca</sub>

Kabelquerschnitt  
Cable cross section

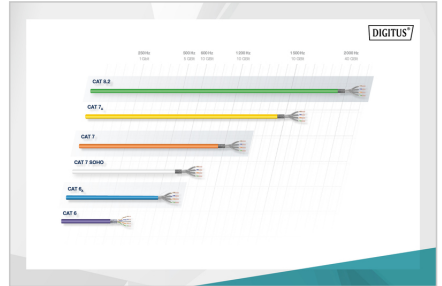
**DIGITUS**

Produktdaten / Product Information	Physikalische Spezifikationen / Physical Properties
<b>Bestandteile / Components:</b> 1x CAT 7 S/FTP Installation Cable, 500m, Simplex, C <sub>Ca</sub>	<b>Material:</b> Polyethylene (PE) jacket, PVC jacket, Polyethylene (PE) jacket, Polyethylene (PE) jacket
<b>Technische Eigenschaften / Technical Properties:</b> CAT 7 S/FTP, 10 Gbit Ethernet, 1000 m, Simplex, C <sub>Ca</sub>	<b>Leistungsfähigkeit / Performance:</b> CAT 7 S/FTP, 10 Gbit Ethernet, 1000 m, Simplex, C <sub>Ca</sub>
<b>Umweltbedingungen / Environmental Conditions:</b> -20°C to +50°C, LSZH, C <sub>Ca</sub> , CPE class	<b>Abmessungen / Dimensions:</b> 10.5 mm x 10.5 mm x 10.5 mm

**DIGITUS**

Leistungsfähigkeit / Performance Properties

ITEM	MT	MT2	MT3	MT4	MT5	MT6	MT7	MT8	MT9	MT10
1	2	3	4	5	6	7	8	9	10	11
12	13	14	15	16	17	18	19	20	21	22



**DIGITUS**

Code	Material	Leistungsfähigkeit / Performance	Abmessungen / Dimensions	Zusätzliche Eigenschaften / Additional Properties
B2 <sub>Ca</sub>	High Back	1+	10.5 mm x 10.5 mm x 10.5 mm	• Spinnungsfähig • Zugfestigkeit • Reißdehnung • Reißkraft • Reißenergie
C <sub>Ca</sub>	High	3	10.5 mm x 10.5 mm x 10.5 mm	• Spinnungsfähig • Zugfestigkeit • Reißdehnung • Reißkraft • Reißenergie
D <sub>Ca</sub>	Medium	3	10.5 mm x 10.5 mm x 10.5 mm	• Spinnungsfähig • Zugfestigkeit • Reißdehnung • Reißkraft • Reißenergie
E <sub>Ca</sub>	Low	3	10.5 mm x 10.5 mm x 10.5 mm	• Spinnungsfähig • Zugfestigkeit • Reißdehnung • Reißkraft • Reißenergie



**Safety notes**

- Data cables must not be bent, stretched or twisted excessively. Sharp bends can damage the cable sheath and lead to failures or short circuits.
- Installation only by trained specialists.
- Installation only in dry rooms.
- The data cable must not be in direct contact with other electrical cables or high-voltage sources in order to avoid electromagnetic interference.

**EU responsible person**

EU based economic operator ensuring the product complies with the required regulations.

ASSMANN Electronic GmbH  
Auf dem Schüffel 3  
Lüdenscheid, Germany  
<https://www.assmann.com>  
[info@assmann.com](mailto:info@assmann.com)