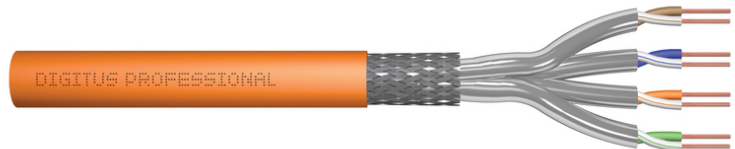


# DIGITUS® CAT 7 S/FTP data cable - installation cable, 500 m, simplex, B2ca

DK-1745-VH-5

EAN 4016032435884



## CAT 7 S-FTP installation cable, 1200 MHz B2ca (EN 50575), AWG 23/1, 500 m drum, Sx, orange

The Digitus Cat 7 installation cable is designed for use in structured data centers and building cabling in accordance with ISO/IEC 11801, DIN EN 50288-4-1, DIN EN 50173, IEC 61156-7, EN 50288-9-1. The cable is ideal for the transmission of analog and digital data and supports PoE, PoE+, 4PPoE (IEEE 802.3af;3at;3bt). The shield structure consists of individually shielded pairs with a tinned copper braid, which ensures excellent shielding and electrical values.

### Future-oriented standards and high-end quality for your network.

- Physical properties:
- Conductor: Bare copper wire, AWG 23/1
- System(s) of assessment and verification of constancy of performance: System 3
- Insulation: SFS-PE (foamed polyethylene jacket)
- Total number of insulated conductors: 8, twisted into 4 pairs
- Color code: Blue-white, orange-white, green-white, brown-white
- Shielding of the individual pairs: aluminum-laminated polyester film, covers 100%
- Overall shielding: copper braiding
- Outer sheath: B2ca according to EN 50575; LSZH
- Outer sheath thickness (nominal): 0.50 mm (Eca); 0.52 mm (Dca); 0.60 mm (Cca); 0.60 (B2ca)
- Color: Orange (RAL 2008)
- Mechanical properties:
- Strain relief: 135N max.
- Dynamic bending radius: 8x AD mm min.
- Static bending radius: 4x AD mm min.

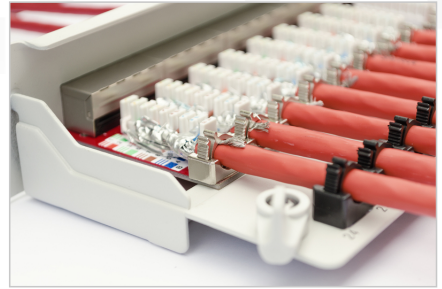
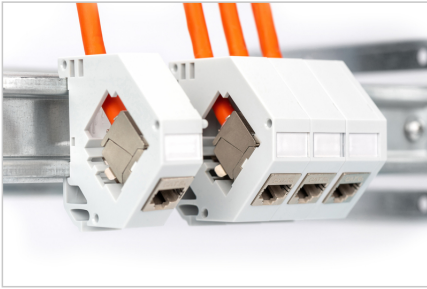
- Transport and storage temperature range: -20 °C to +60 °C
- Operating temperature range: -20 °C to +50 °C
- Installation temperature range: 0 °C to +50 °C
- Electrical properties:
- Impedance: 100±15 Ohm @ 4 - 1000 MHz; 100±25 OHM @ 100-600 MHz
- Capacitance: 45pF/m nom. at 1KHz
- Capacitance: 40 pF/m nominal @ 1 KHz
- Insulation resistance: 5 GOhm x km min.
- DC resistance: 95 Ohm/km max. (2% max. unbalanced resistance)
- Loop resistance: 190 Ohm/km max. (2% max. unbalanced resistance)
- Operating voltage: 72 Vdc max.
- Coupling attenuation: CA-Type 1b
- Phase delay: 450 nS/100 m max.
- Time delay: 10 nS/100 m max.
- Separation class: "d" according to EN 50174-2
- NVP: 79%
- Flame spread: EN 60332-1-2 (LSOH-PVC)
- Halogen-free, corrosiveness: EN 60754-1/2 (LSOH)
- Smoke density EN 61034-2

### Attributes

- Assortment: Twisted Pair Installation Cables
- Category: CAT 7
- Shielding: S-FTP, pairs in metal foil and braid shielding
- CPR: B2ca
- Length: 500 m
- Color: orange
- Jacket: LSOH
- Structure: 4 x 2 AWG 23/1, solid twisted pair

Logistics						
	Number (pcs)	Weight (kg)	Depth (cm)	Width (cm)	Height (cm)	cm³
Packaging Unit Carton	1	28.01	38.00	38.00	38.50	55,594.00
Packaging Unit Inside	1	28.01	38.00	38.00	38.50	55,594.00
Packaging Unit Single	1	28.01	38.00	38.00	38.50	55,594.00
Net single without Packaging	1	0.00	38.00	38.00	38.50	0.00

More images:



**DIGITUS**

AWG 23/1 | 1200 MHz | 10 Gbit Ethernet | CAT 7 | 1000 m

20/7+50° | LSZH | B2<sub>ca</sub> CPFL class

**CAT 7 S/FTP Installation Cable, 500m, Simplex, B2<sub>ca</sub>**

**DIGITUS**

DK.1745-VH-S // CAT 7 S/FTP Installation Cable, 500m, Simplex, B2<sub>ca</sub>

Anwendungsbeispiel  
Example of use

**DIGITUS**

DK.1745-VH-S // CAT 7 S/FTP Installation Cable, 500m, Simplex, B2<sub>ca</sub>

Kabelquerschnitt  
Cable cross section

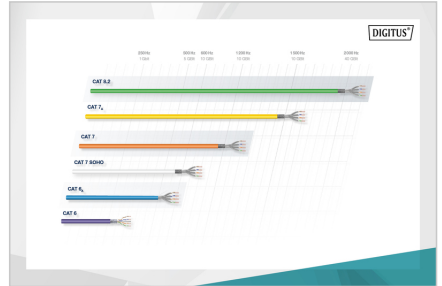
**DIGITUS**

Produktdaten / Product Information	Physische Spezifikationen / Physical Properties
<b>Bestellnummer / Order Number:</b> DK.1745-VH-S <b>Produktname / Product Name:</b> CAT 7 S/FTP Installation Cable, 500m, Simplex, B2 <sub>ca</sub> <b>Artikelnummer / Article Number:</b> 1745-VH-S <b>Hersteller / Manufacturer:</b> ASSMANN ELECTRONIC GMBH <b>Produkttyp / Product Type:</b> CAT 7 S/FTP Installation Cable	<b>Material / Material:</b> Polyethylen (PE) <b>Farbe / Color:</b> Orange <b>Querschnitt / Cross-section:</b> 10x10 mm <b>Leitungsstruktur / Conductor Structure:</b> 4x25/7+50° <b>Isolation / Isolation:</b> LSZH <b>Temperaturbereich / Temperature Range:</b> -20°C bis +75°C <b>Flammverhalten / Flammverhalten:</b> B2 <sub>ca</sub>

**DIGITUS**

Leitungsstruktur / Conductor Properties

AWG	MT	MT	PE-MT	AD	AD	AD	AD	AD	AD
1	2	3	4	5	6	7	8	9	10
11	12	13	14	15	16	17	18	19	20
21	22	23	24	25	26	27	28	29	30
31	32	33	34	35	36	37	38	39	40
41	42	43	44	45	46	47	48	49	50



**DIGITUS**

CEP-Kennzeichen / CEP Code	Bestandteile / Components	Leitungsstruktur / Conductor Structure	Adfermetur / Shielding	Zusatzmaterialien / Accessories
B2 <sub>ca</sub>	Stahlblech / Steel plate	1+	• Spinnwebung / Weaving • Metallische Abschirmung / Metallic shielding • Regelmäßige Filterlöcher (Distanz) / Regular filter holes (spacing)	• Schutzkappe / Protective cap • Schutzkappe / Protective cap • Schutzkappe / Protective cap
C <sub>ca</sub>	Stahlblech / Steel plate	3	• Spinnwebung / Weaving	• Schutzkappe / Protective cap
D <sub>ca</sub>	Stahlblech / Steel plate	3	• Spinnwebung / Weaving	• Schutzkappe / Protective cap
E <sub>ca</sub>	Stahlblech / Steel plate	3	• Spinnwebung / Weaving	• Schutzkappe / Protective cap



Safety notes

- Data cables must not be bent, stretched or twisted excessively. Sharp bends can damage the cable sheath and lead to failures or short circuits.
- Installation only by trained specialists.
- Installation only in dry rooms.
- The data cable must not be in direct contact with other electrical cables or high-voltage sources in order to avoid electromagnetic interference.

EU responsible person

EU based economic operator ensuring the product complies with the required regulations.

ASSMANN Electronic GmbH  
 Auf dem Schüffel 3  
 Lüdenscheid, Germany  
<https://www.assmann.com>  
[info@assmann.com](mailto:info@assmann.com)