

# DIGITUS® Extendible Shelf for fixed mounting on front 483 mm (19") profile rails

DN-19-TRAY-2-450  
 EAN 4016032427988



**2U extendib. shelf for cabinets from 450 mm depth 88x483x352 mm, up to 30 kg, grey (RAL 7035)**

The shelf for fixed mounting is easy to install on the front 483 mm (19") profile rails of your 483 mm (19") network- or server cabinet. Due to its compact construction it is perfectly suitable also for 483 mm (19") wall mounting cabinets with a depth from 450 mm. The shelf is extendible via handle which makes the access easier. Due to its stable, perforated steel sheet with a load capacity of 30 kg, it is the optimal surface for components which are not 483 mm (19") suitable.

**Due to its compact construction it is perfectly suitable also for 483 mm (19") wall mounting cabinets with a depth from 450 mm.**

- for fixed installation on the front 483 mm (19") profile rails
- extendible, with handle

- sturdy, perforated steel sheet
- incl. fixing material
- 2-point fixing (front 19" profile rails)

**Attributes**

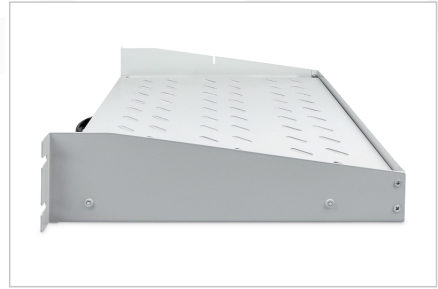
- Boja: svijetlo siva, RAL 7035
- Jedinice: 2
- Kapacitet opterećenja: 30 kg
- Vrsta montaže: Proširivo
- Inčni faktor oblika (IEC 60297): 482,6 mm (19")
- Prikladna dubina ormara: 450 mm

**Package contents**

- Installation set (screws, cage nuts, washers)
- Handle

Logistics						
	Number (pcs)	Weight (kg)	Depth (cm)	Width (cm)	Height (cm)	cm <sup>3</sup>
Packaging Unit Carton	4	16.20	41.00	42.00	54.00	92,988.00
Packaging Unit Inside	1	4.05	42.00	49.00	9.00	18,522.00
Packaging Unit Single	1	4.05	42.00	49.00	9.00	18,522.00
Net single without Packaging	1	3.46	36.70	48.30	8.80	0.00

**More images:**



**Safety notes**

- When installing and using the accessory product for network cabinets, observe the respective safety instructions of the manufacturer or the cabinet system in which you want to use the accessory.

**EU responsible person**

EU based economic operator ensuring the product complies with the required regulations.

ASSMANN Electronic GmbH  
Auf dem Schüffel 3  
Lüdenscheid, Germany  
<https://www.assmann.com>  
[info@assmann.com](mailto:info@assmann.com)