

DIGITUS 4 Port Gigabit PoE Switch, Unmanaged, 1 Uplink

DN-95330

EAN 4016032390275



Gigabit Ethernet PoE Switch 4-port PoE + 1-port uplink, 62W PoE budget

The DIGITUS 5-Port Gigabit Desktop Switch with four Power over Ethernet ports and one additional uplink Port, offers your network significant improvement in terms of performance and efficiency. Thanks to PoE support, you only need a single (network) cable for power and data transfer. This switch makes it much easier to connect devices such as access points, network cameras, and IP telephones, and requires far less cabling than alternatives. It also allows you to extend your network in places where there are no power supply cables or sockets available. The switch does not require any configuration and therefore guarantees quick and seamless integration into the network. Moreover, the switch's fanless design ensures soundless operation, which makes this device the perfect solution for office environments and meeting rooms.

Network Switch with integrated Power over Ethernet (PoE) solution for an optimal, cost effective and fast integration in small or medium-sized networks

- 4-Port 10/100/1000 Mbps PoE Gigabit Desktop Switch + 1x Uplink
- Ethernet IEEE802.3 / 802.3u / 802.3x / IEEE802.3 af/at
- Power over Ethernet (PoE) - You only need one cable for power and data transfer
- PoE power budget: 62 Watts (one to four ports)
- Supports PoE: One to four ports (802.af, 15.4 Watts) or for two ports (802.3.at, 30 Watts)
- Maximum power output: 65 Watts
- No configuration necessary
- Status LEDs on each port

- Pin Feet: V+ (RJ45 Pin 1, 2) V- (RJ45 Pin 3, 6)
- Circuit isolation protection
- Backplane: 10Gbps
- MAC address table: 2K
- Power supply: 3W max.
- Dimensions (L x W x H): 140 mm x 95 mm x 39 mm
- Weight: 300g
- Color: Black

Attributes

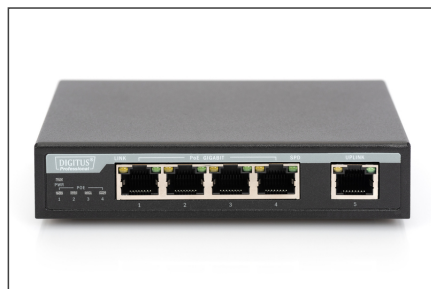
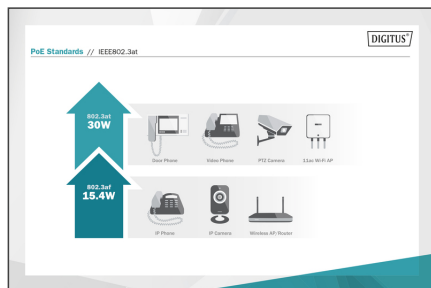
- Number of ports: 4
- PoE Power budget: 62 W
- PoE standard: IEEE802.3at (PoE+)
- Ethernet speed: Gigabit
- Industrial usage: no
- Installation type: Desktop
- Managed: no
- Number of ports (Uplink): 1
- Outdoorsuitable: no
- PoE (Power over Ethernet): yes
- Protection against vandalism: no
- Uplink port connection: RJ45
- VLAN: no

Package contents

- 5-Port Gigabit PoE Switch
- Power Supply
- Power Cable
- Manual

Logistics						
	Number (pcs)	Weight (kg)	Depth (cm)	Width (cm)	Height (cm)	cm³
Packaging Unit Carton	16	13.60	30.00	40.00	32.00	38,400.00
Packaging Unit Inside	1	0.85	14.00	19.50	7.00	1,911.00
Packaging Unit Single	1	0.85	14.00	19.50	7.00	1,911.00
Net single without Packaging	1	0.30	8.50	13.00	3.00	0.00

More images:



Safety notes

- This product is intended for indoor use only.
- Read all instructions and follow all warnings and instructions on the device.
- Do not place this appliance on an unstable surface (such as a trolley, stand, table, etc.).
- Do not use this appliance near water.
- Do not place this appliance near or above a radiator.
- The housing is equipped with openings for heat dissipation and ventilation. To prevent overheating during operation, the ventilation openings must not be blocked or covered.
- Do not place the appliance on a soft surface (e.g. bed, sofa, blanket, etc.). This will block the ventilation.
- The appliance must not be installed in a closed environment if adequate ventilation is not guaranteed.
- Do not spray any liquids onto the appliance.
- Disconnect the mains plug before cleaning. Do not use any liquid or foam cleaners.
- Clean the appliance with a damp cloth.
- Connect the device according to the power supply on the rating plate.
- To prevent damage to the appliance, it is important that all appliances are properly earthed.
- Do not place any objects on the power cable and lay it in such a way as to avoid tripping hazards.
- Use a surge protector, a regulator or an uninterruptible power supply (UPS) to protect your system from sudden, temporary and reduced power.
- Secure the system cable and mains cable properly and ensure that no objects are pressing on the cable.
- Do not insert any objects into the appliance through the openings in the housing. There is a risk of a short circuit, which can lead to fire or electric shock.
- Do not attempt to repair the appliance yourself. Always contact an authorized customer service centre.
- If any of the following conditions occur, unplug the appliance and send it to an authorized service centre for repair
 - The mains cable, power supply unit or plug for the power supply is damaged or worn;
 - Liquid has penetrated the appliance;
 - The device has been exposed to rain or water;
 - The device has been dropped or the housing has been damaged;
 - The function of the device has obviously changed;
 - The appliance cannot be operated as described in the operating instructions.

EU responsible person

EU based economic operator ensuring the product complies with the required regulations.

ASSMANN Electronic GmbH
 Auf dem Schüffel 3
 Lüdenscheid, Germany
<https://www.assmann.com>
info@assmann.com