

DIGITUS® Caixa de montagem na parede - Slim

DN-19 WM-V4U-SL
EAN 4016032383253



Caixa de montagem na parede, fina 800x640x220mm, 4U vertical, cor cinzenta (RAL 7035)

A caixa de 483 mm (19") para montagem na parede da série Slim permite a montagem vertical de 4U em profundidade. Economiza espaço especialmente para redes, DVR, sistemas de som, aplicações de paginação e patch ou outros componentes activos de 483 mm (19").

Design fino com áreas de montagem para instalações verticais no interior

- Chapa de aço com 1,0 - 1,5 mm de espessura
- 483 mm (19") áreas de montagem no interior: 4U em profundidade
- Entradas de cabos perfuradas com cobertura de plástico em todos os lados (145x70 mm)
- Secção de base preparada para a montagem do ventilador
- Porta frontal com fechadura e ranhuras de ventilação
- As dobradiças da porta são fáceis de mudar
- Dimensões da embalagem (A x L x P): 820x660x230 mm

- Máx. Altura de instalação no interior: 610 mm

Attributes

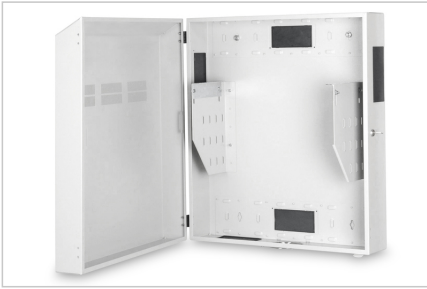
- Cabinet type: Wall mounting cabinet, home automation
- Color: light grey, RAL 7035
- Depth: 220 mm
- Front door: Steel door, closed, single opening
- Load capacity: 100 kg
- Side panels: Both sides
- Units: 4
- Width: 640 mm
- IP protection class: IP20
- Mounted: yes

Package contents

- Conjunto de cabos de ligação à terra
- 2 x chave

Logistics						
	Number (pcs)	Weight (kg)	Depth (cm)	Width (cm)	Height (cm)	cm³
Packaging Unit Carton	1	18.00	23.00	66.00	82.00	124,476.00
Packaging Unit Inside	1	18.00	23.00	66.00	82.00	124,476.00
Packaging Unit Single	1	18.00	23.00	66.00	82.00	124,476.00
Net single without Packaging	1	16.00	22.00	64.00	80.00	0.00

More images:



Safety notes

- Ensure adequate ventilation to prevent the installed devices from overheating.
- Network cabinets should not be overfilled and the ventilation openings must not be blocked.
- Cables should be laid neatly and organized in cable ducts or trays.
- Use surge protection devices to protect sensitive devices from power surges or lightning strikes.
- Avoid moisture or wetness while observing the respective IP protection class.
- Ensure that the cabinet and the devices used are properly earthed.
- In regions with frequent thunderstorm activity, professional lightning protection should be integrated into the power supply.
- To avoid uneven loading, always mount the heaviest units at the bottom of the cabinet.
- Disconnect the installed devices from the power supply during maintenance or installation work.

EU responsible person

EU based economic operator ensuring the product complies with the required regulations.

ASSMANN Electronic GmbH
Auf dem Schüffel 3
Lüdenscheid, Germany
<https://www.assmann.com>
info@assmann.com