

DIGITUS® Suporte de parede universal para monitores até 81 cm (32")

DA-90303-1

EAN 4016032383123



Suporte de parede para TV, 32" máx. 18 kg, máx. VESA 100x100

Suporte de monitor universal para montagem na parede do seu monitor LED ou LCD. Espaço de parede muito reduzido de apenas 18 mm para uma montagem elegante do seu ecrã plano. O suporte para monitor permite a instalação de monitores LED, LCD de todas as marcas. Basta ter em conta as dimensões VESA e o peso do seu monitor para selecionar um suporte adequado.

Universalmente adequado para todos os monitores LED e LCD até 32" com opção de montagem de acordo com a norma VESA

- Adequado para distâncias padrão VESA de 75 x 75 e 100 x 100 mm
- Para monitores até 81 cm (32") e um peso máximo de 18 kg
- Apenas 18 mm de espaço livre na parede
- Nível de bolha de ar integrado para uma instalação fácil

- Peso 0,3 kg
- Dimensões: 120 x 120 x 18 mm

Attributes

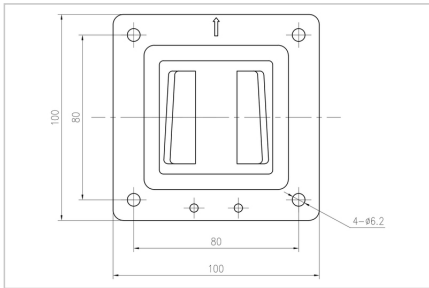
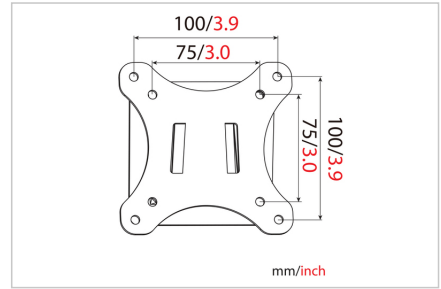
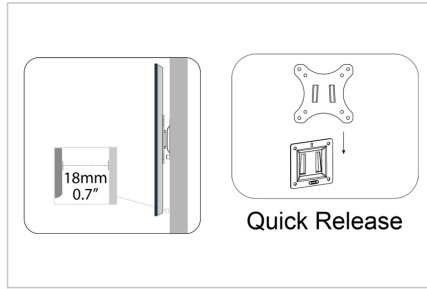
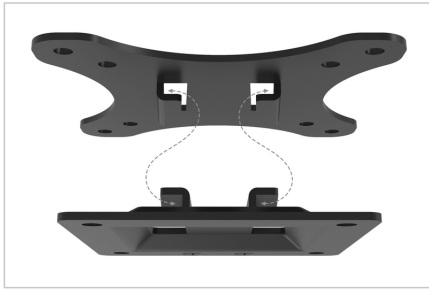
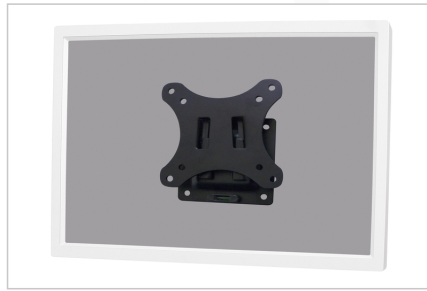
- Monitor weight (max.): 18 kg
- Mounting method: Wall-mount
- Number of monitors: 1
- Size of monitors: up to 32"
- VESA mount: 100x100 mm

Package contents

- Suporte de parede para monitor
- Instruções de utilização
- Parafusos para montagem do monitor

Logistics						
	Number (pcs)	Weight (kg)	Depth (cm)	Width (cm)	Height (cm)	cm³
Packaging Unit Carton	36	15.50	27.50	42.00	21.00	24,255.00
Packaging Unit Inside	1	0.43	15.00	13.00	2.50	487.50
Packaging Unit Single	1	0.43	15.00	13.00	2.50	487.50
Net single without Packaging	1	0.33	12.00	12.00	1.50	0.00

More images:



Safety notes

- Please read the entire manual before starting assembly and installation. Please contact your local dealer if you have any questions about the instructions or warnings.
- CAUTION: Use with products that exceed the permitted weight may result in damage or possible injury.
- Brackets should be fitted in accordance with the installation instructions. Incorrect installation can result in damage or injury.
- Use safety equipment and suitable tools. The product should only be installed by specialists.
- This product can be installed on timber-framed, solid concrete or stone walls.
- The load-bearing surfaces should be able to safely withstand the entire weight of appliances and all additional components.
- Only use the installation screws supplied and DO NOT TIGHTEN the screws TOO TIGHT.
- This product contains small parts that can cause a choking hazard if swallowed. Keep these parts away from children.
- Only use this product indoors. Using the product outdoors can lead to injuries and damage.
- IMPORTANT: Before installation, please check all components received against the components list. If parts are damaged or missing, ask your local dealer for replacement parts.
- MAINTENANCE: Check the bracket regularly for safety and stability (preferably every three months).

EU responsible person

EU based economic operator ensuring the product complies with the required regulations.

ASSMANN Electronic GmbH
 Auf dem Schüffel 3
 Lüdenscheid, Germany
<https://www.assmann.com>
info@assmann.com