

DIGITUS Universal TV/Monitor Wall Mount, 55"

DA-90334

EAN 4016032379980



Universal TV/Monitor Wall Mount, 140cm (55") 10° tilting, 35 kg max load, VESA 400x400, black

The Universal Wall Mount is suitable for mounting above the direct viewing angle thanks to tilt adjustment of up to 10°. The spirit level included in the delivery ensures you can easily install the wall mount precisely onto the wall. The TV clips in securely thanks to the spring protection lock. The Universal Wall Mount allows you to install LED, LCD, and plasma TVs of all brands. Simply note the VESA measurement and the weight of your TV in order to select an appropriate wall mount.

Universal wall mount with tilt adjustment

- Suitable for VESA mounting patterns of 200 x 200, 300 x 300, 400 x 200, and 400 x 400 mm
- Maximum load bearing capacity: up to 35 kg

- Weight: 1.2 kg
- Dimensions: 498 x 425 x 34 mm
- Universally suitable for all LED, LCD, and plasma TVs with a mounting option in accordance with the VESA standard
- For wall-mounting devices with a screen diagonal of 82 cm (32") to 140 cm (55")
- Freely adjustable vertical tilt angle up to 10°
- Spirit level included for installation
- Spring protection to lock the TV in the mount

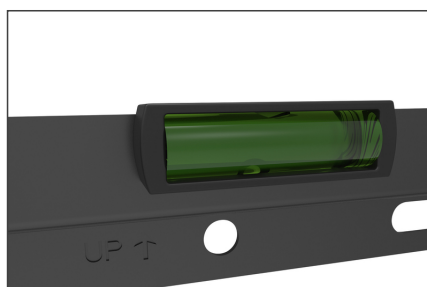
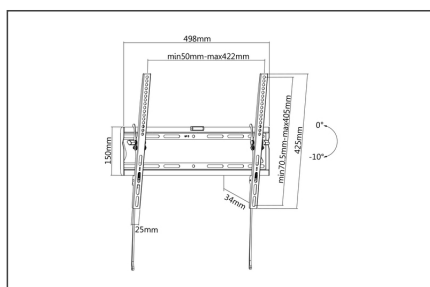
Package contents

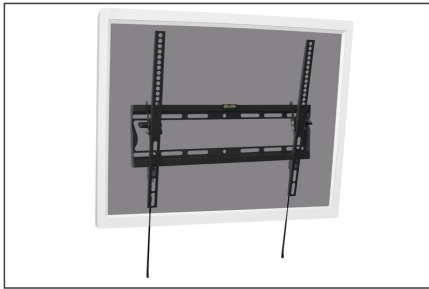
- TV wall mount
- Screws for installing the TV onto the wall mount
- Manual

Logistics

	Number (pcs)	Weight (kg)	Depth (cm)	Width (cm)	Height (cm)	cm³
Packaging Unit Carton	10	16.52	31.50	50.00	23.00	36,225.00
Packaging Unit Inside	1	1.65	15.50	50.50	3.50	2,739.62
Packaging Unit Single	1	1.65	15.50	50.50	3.50	2,739.62
Net single without Packaging	1	1.50	14.80	49.50	2.80	0.00

More images:



**Safety notes**

- Please read the entire manual before starting assembly and installation. Please contact your local dealer if you have any questions about the instructions or warnings.
- CAUTION: Use with products that exceed the permitted weight may result in damage or possible injury.
- Brackets should be fitted in accordance with the installation instructions. Incorrect installation can result in damage or injury.
- Use safety equipment and suitable tools. The product should only be installed by specialists.
- This product can be installed on timber-framed, solid concrete or stone walls.
- The load-bearing surfaces should be able to safely withstand the entire weight of appliances and all additional components.
- Only use the installation screws supplied and DO NOT TIGHTEN the screws TOO TIGHT.
- This product contains small parts that can cause a choking hazard if swallowed. Keep these parts away from children.
- Only use this product indoors. Using the product outdoors can lead to injuries and damage.
- IMPORTANT: Before installation, please check all components received against the components list. If parts are damaged or missing, ask your local dealer for replacement parts.
- MAINTENANCE: Check the bracket regularly for safety and stability (preferably every three months).

EU responsible person

EU based economic operator ensuring the product complies with the required regulations.

ASSMANN Electronic GmbH
Auf dem Schüffel 3
Lüdenscheid, Germany
<https://www.assmann.com>
info@assmann.com