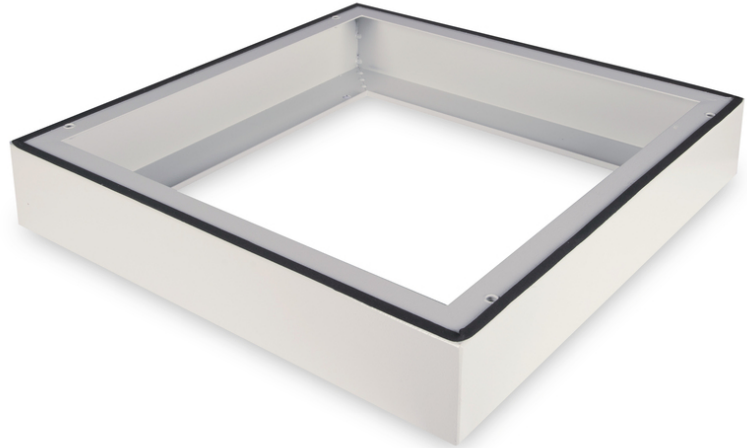


DIGITUS® Base for IP55 wall-mounted enclosure - 600x600 mm (WxD)

DN-19 PLINTH-6-I-OD

EAN 4016032370512



Plinth for IP55 outdoor wall mounting cabinet 100x600x600 mm, color grey (RAL 7035)

The base for 483 mm (19") IP55 wall-mounted enclosures extends the height by 100 mm and provides space for structured cabling. Installation is carried out in simple steps with the enclosed screws. The base is also equipped with a seal to maintain the IP55 degree of protection. Enables installation on a solid floor foundation.

- Simple installation under the cabinets
- 1.5 - 2.0 mm thick sheet steel
- Maximum load capacity: 1000 kg

Attributes

- Boja: svijetlo siva, RAL 7035
- Dubina: 600 mm
- Širina: 600 mm
- Inčni faktor oblika (IEC 60297): 482,6 mm (19")
- Za seriju ormara: Ugradnja na zidu

Package contents

- Fastening material

Logistics						
	Number (pcs)	Weight (kg)	Depth (cm)	Width (cm)	Height (cm)	cm ³
Packaging Unit Carton	1	6.30	62.00	62.00	12.00	46,128.00
Packaging Unit Inside	1	6.30	62.00	62.00	12.00	46,128.00
Packaging Unit Single	1	6.30	62.00	62.00	12.00	46,128.00
Net single without Packaging	1	5.20	60.00	60.00	10.00	0.00

Safety notes

- When installing and using the accessory product for network cabinets, observe the respective safety instructions of the manufacturer or the cabinet system in which you want to use the accessory.

EU responsible person

EU based economic operator ensuring the product complies with the required regulations.

ASSMANN Electronic GmbH
 Auf dem Schüffel 3
 Lüdenscheid, Germany
<https://www.assmann.com>
info@assmann.com