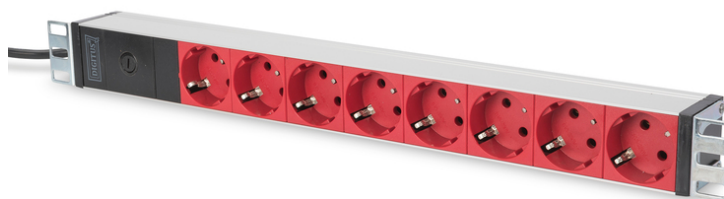


Digitus® aluminum outlet strip with pre-fuse, 8 safety outlets, 2 m supply IEC C14 plug

DN-95410-R

EAN 4016032369721



1U Aluminum PDU, rackmountable, 8x red CEE 7/3 10A Plug, 250VAC 50/60Hz, outlet

The DIGITUS® power distribution units are the perfect solution for you 482.6 mm (19") network- or server cabinet. Optimized for rack installation with 220-240V 50-60 Hz the DIGITUS® PDU offer you the best performance with qualified efficiency. The 482.6 mm (19") fixing material provides an optimized enclosing on the profile rails of your cabinets. Every PDU can be mounted horizontally as well as vertically and has the possibility, according to the cabinet, to be mounted faced up or down.

Safe and professional power in the 482.6 mm (19") range

- 8x RED Socket outlets 250VAC 50/60Hz / 10A / 2500W
- Aluminum profile
- 35° turned outlets
- 2 metal fixings included

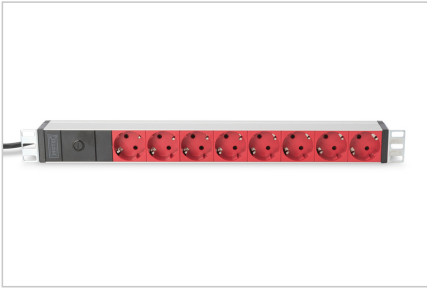
- Cable: 2 m H05VV-F 3G1,5 mm²
- IEC C14, plug
- Pre-fuse
- 35° turned safety outlets

Attributes

- Current: 10 A
- Input Plug: IEC 60320 C14 inlet
- Installation: Rack 0U, Rack 1U
- Outlets: CEE 7/3
- Phase: 1ph
- Power: 2,3 kVA
- Volts: 230 V
- Inch form factor (IEC 60297): 482.6 mm (19")

Logistics						
	Number (pcs)	Weight (kg)	Depth (cm)	Width (cm)	Height (cm)	cm³
Packaging Unit Carton	10	9.64	53.00	28.50	25.00	37,762.50
Packaging Unit Inside	1	0.96	50.10	11.00	5.00	2,755.50
Packaging Unit Single	1	0.96	50.10	11.00	5.00	2,755.50
Net single without Packaging	1	0.70	46.00	4.50	4.50	0.00

More images:



Safety notes

- This product is not intended for unsupervised use by children or persons under their care!
- Prevent higher humidity or temperatures than those specified in the data sheet - Avoid moisture, dust or vapors, solvents, flammable gases.
- Multiple sockets are not designed for permanent use with heavy loads!
- Multiple sockets must not be cascaded (avoid stringing together several multiple sockets).
- The maximum connected load must not be exceeded.
- Defective multiple sockets must be taken out of service immediately and disposed of in an environmentally friendly manner.
- In the event of a fault, take the product out of operation and contact a qualified electrician.
- Do not open the product.
- Disconnect the product from the power supply before cleaning. Do not use any aggressive or abrasive cleaning agents for cleaning.
- The ingress of liquids can lead to a short circuit.

EU responsible person

EU based economic operator ensuring the product complies with the required regulations.

ASSMANN Electronic GmbH
Auf dem Schöffel 3
Lüdenscheid, Germany
<https://www.assmann.com>
info@assmann.com