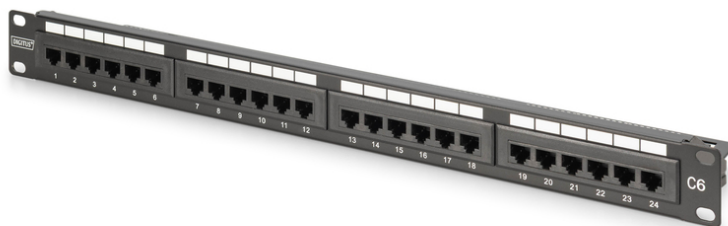


Digitus® CAT 6, class E patch panel, unshielded

DN-91624U-CR

EAN 4016032354185



DIGITUS CAT 6, Class E Patch Panel, unshielded 24-port RJ45, 8P8C, LSA, 1U, Rack Mount

The unshielded CAT 6 patch panel from DIGITUS® is available as a 16- or 24-port (1 rack unit) or 48-port variant (2 rack units). It is manufactured in accordance with the requirements of Link Performance Class E, for up to 250 MHz, ISO/IEC 11801 and EN 50173 and is UL certified. The housing is made of 1.5 mm galvanized cold-rolled steel and is therefore perfectly suited for 19" rack mounting.

Future-oriented standards and high-end quality for your network.

- Application areas: Up to 250 MHz, 1GBase-T, PoE
- Standards: ISO/IEC 11801 3rd Ed., EN 50173-1, EIA/TIA 568-C
- General properties:
- Suitable for 483 mm (19") rack mounting
- RJ45 sockets, 8P8C
- Cable installation via LSA strips, color-coded according to EIA/TIA 568 A & B
- Cable fixing by means of quick latches
- Mechanical properties:
- Housing material: 1.5 mm galvanized, cold-rolled steel according to EN1.4301, UNS S30400, AISI 304 and LMSAD110
- RJ45 socket material: ABS UL 94V-0
- Contact RJ45 socket: Nickel-plated phosphor bronze, 0.5 mm gold-plated contact

- RJ-45 shielding: Nickel-plated bronze
- LSA cutting clamp: Krone LSA+, UL 94V-2, galvanized phosphor bronze
- Earthing wire: Not included in the scope of delivery
- Printed circuit board: FR4, UL 94V-0
- Physical properties:
- Insertion force: 30N max. (IEC 60603-7-5)
- Tensile load: 7.7 kg between socket and plug
- Operating temperature: -20° C to +70 °C (ISO/IEC 11801, EN 50173-1, ANSI/TIA/EIA 568 C)
- Socket mating cycle: > 750 acc. to ISO/IEC 11801, IEC 60603-7-5
- Terminal: > 200 acc. to ISO/IEC 11801, IEC 60603-7-5
- Core receptacle: 22-26 AWG solid and stranded conductors
- Insulation resistance: > 500 MOhm
- Contact resistance: < 20 milliOhms
- Dielectric strength: 1000 VDC (contact/contact), 1500 VDC (contact/ground)

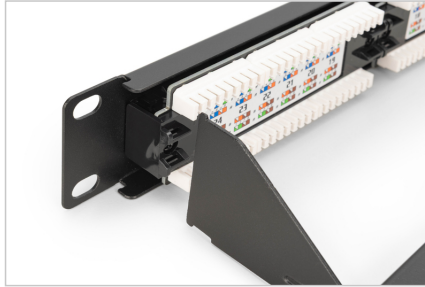
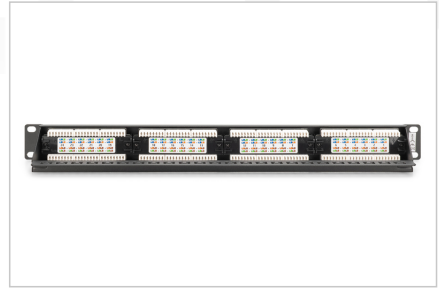
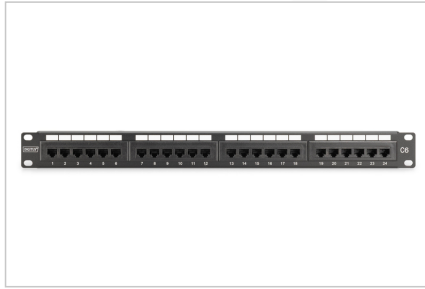
Attributes

- Color: black, RAL 9005
- Ports: 24
- Units: 1
- Category: CAT 6

Logistics

	Number (pcs)	Weight (kg)	Depth (cm)	Width (cm)	Height (cm)	cm³
Packaging Unit Carton	10	8.20	52.00	24.00	27.00	33,696.00
Packaging Unit Inside	1	0.82	8.00	56.00	10.00	4,480.00
Packaging Unit Single	1	0.82	8.00	56.00	10.00	4,480.00
Net single without Packaging	1	0.51	3.00	48.50	4.50	0.00

More images:



Safety notes

- Protect product from moisture
- Avoid antistatic charging when installing the product
- Observe the specifications of the raw cable manufacturer during installation

EU responsible person

EU based economic operator ensuring the product complies with the required regulations.

ASSMANN Electronic GmbH
Auf dem Schüffel 3
Lüdenscheid, Germany
<https://www.assmann.com>
info@assmann.com