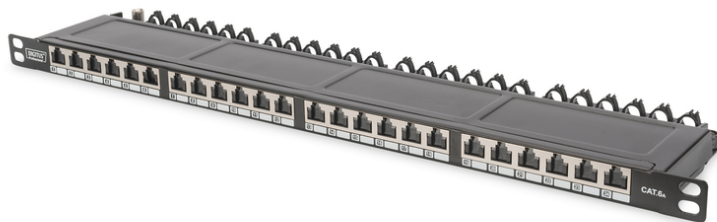


DIGITUS DIGITUS CAT 6a Class EA патч-панель, экранированная

DN-91624S-SL-EA
EAN 4016032341369



CAT 6A Class EA patch panel, shielded, 0.5U 24-port RJ45, incl. dust cover, 8P8C, black

The DIGITUS® 24-port patch panel offers a very high packing density with only 0.5 U. This means that up to 48 ports can be implemented on 1 U with two 0.5 U panels. The patch panel is shielded and equipped with dust protection caps on the RJ45 sockets. The 360° shield contact of the cables ensures the best performance characteristics. The installation cables can be securely fixed with the integrated cable clamps. The quick-release fastener on the housing ensures easy and tool-free access to the LSA insulation displacement connectors.

Очень компактный (только 0,5U) – с пылепредохранительными колпачками – отличные работоспособность и качество связи для Вашей сети

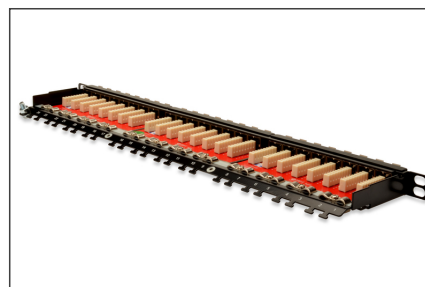
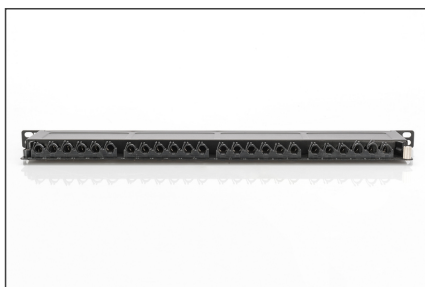
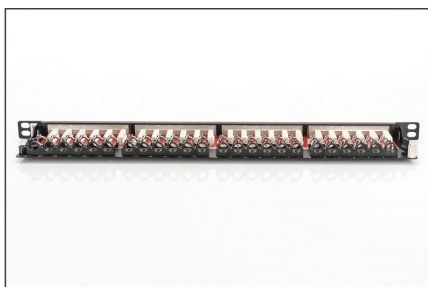
- Общие свойства:
- Подключение кабеля посредством зажимов LSA, цветовая кодировка в соответствии с EIA/TIA 568 A & B
- Соединитель для централизованного заземления
- Перекрытие экрана 360°
- Встроенная пылезащитная шторка
- Механические свойства
- Физическое описание

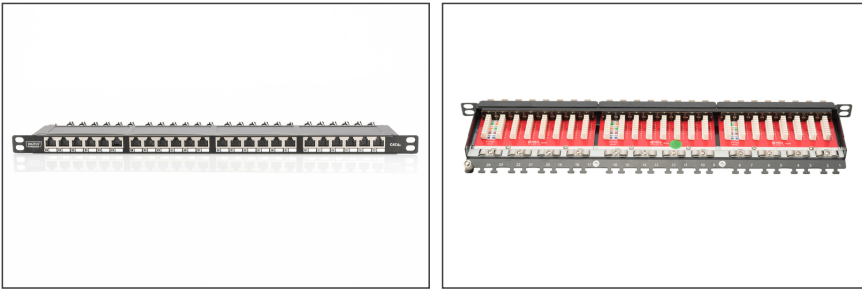
Attributes

- Color: black, RAL 9005
- Ports: 24
- Units: 0
- Category: CAT 6A

Logistics						
	Number (pcs)	Weight (kg)	Depth (cm)	Width (cm)	Height (cm)	cm³
Packaging Unit Carton	20	30.00	54.50	30.00	12.00	19,620.00
Packaging Unit Inside	1	1.50	53.00	14.00	3.50	2,597.00
Packaging Unit Single	1	1.50	53.00	14.00	3.50	2,597.00
Net single without Packaging	1	0.00	0.00	0.00	0.00	0.00

More images:



**Safety notes**

- Protect product from moisture
- Avoid antistatic charging when installing the product
- Observe the specifications of the raw cable manufacturer during installation

EU responsible person

EU based economic operator ensuring the product complies with the required regulations.

ASSMANN Electronic GmbH
Auf dem Schüffel 3
Lüdenscheid, Germany
<https://www.assmann.com>
info@assmann.com