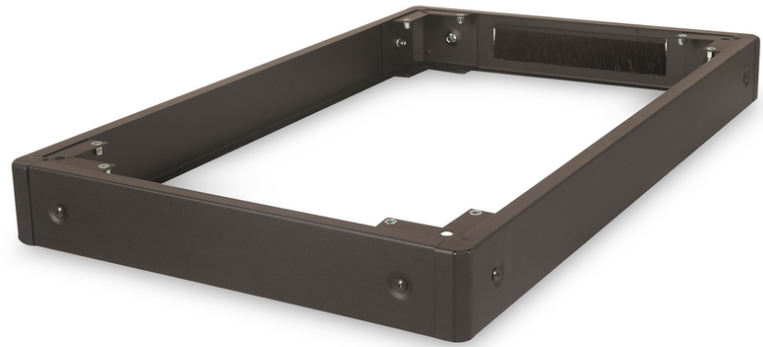


DIGITUS® Base 600 x 1000 mm (WxD) for Unique & Unique Light network enclosures and Unique Server-N server enclosures

DN-19 PLINTH-6/10-NB

EAN 4016032335078



Plinth, 100 x 600 x 1000 mm, black for Unique, Unique Light, Unique Server-N

With the DIGITUS® plinths you can increase the ground clearance of your network or server enclosure by 100 mm. If required, up to two plinths can be mounted on top of each other to achieve a height of 200 mm. The interior can be used to store excess cable lengths and for cable management. Delivery is unassembled to optimize logistics.

The DIGITUS® 483 mm (19") accessories have been developed for the high demands of IT infrastructure and are manufactured to German quality standards.

- Simple installation under the cabinets
- 1.5 - 2.0 mm thick sheet steel

- Removable side panels
- Rear panel with cable entry and brush strip, 300 x 60 mm
- Maximum load capacity: 1200 kg

Attributes

- Color: light grey, RAL 7035
- Depth: 1000 mm
- Width: 600 mm
- For cabinet series: Unique & Unique Light Network, Unique Server-N, Dynamic Basic
- Inch form factor (IEC 60297): 482.6 mm (19")

Package contents

- Fastening material

Logistics						
	Number (pcs)	Weight (kg)	Depth (cm)	Width (cm)	Height (cm)	cm³
Packaging Unit Carton	1	7.61	19.00	94.00	14.00	25,004.00
Packaging Unit Inside	1	7.61	19.00	94.00	14.00	25,004.00
Packaging Unit Single	1	7.61	19.00	94.00	14.00	25,004.00
Net single without Packaging	1	7.10	100.00	60.00	10.00	0.00

More images:



Safety notes

- When installing and using the accessory product for network cabinets, observe the respective safety instructions of the manufacturer or the cabinet system in which you want to use the accessory.

EU responsible person

EU based economic operator ensuring the product complies with the required regulations.

ASSMANN Electronic GmbH
Auf dem Schüffel 3
Lüdenscheid, Germany
<https://www.assmann.com>
info@assmann.com