

# DIGITUS Fiber Optic Splice Box, Equipped, LC, OS2

DN-96331/9  
EAN 4016032278450



**FO splice box, 1U, equipped, 12x LC DX, OS2 incl. splice cassette, colored pigtails, couplers**

FO splice box, 1U, equipped, 12x LC DX, OS2,incl. splice cassette, colored pigtails, couplers

- Completely prefabricated, fiber pigtails exposed and inserted into the splice cassette(s)
- Colored pigtails
- Couplers with ceramic sleeve
- Couplers in polymer housing
- Carrier housing made of 1.0 mm steel sheet, varnished
- 1 height unit (44.45 mm)
- 483mm width (19")

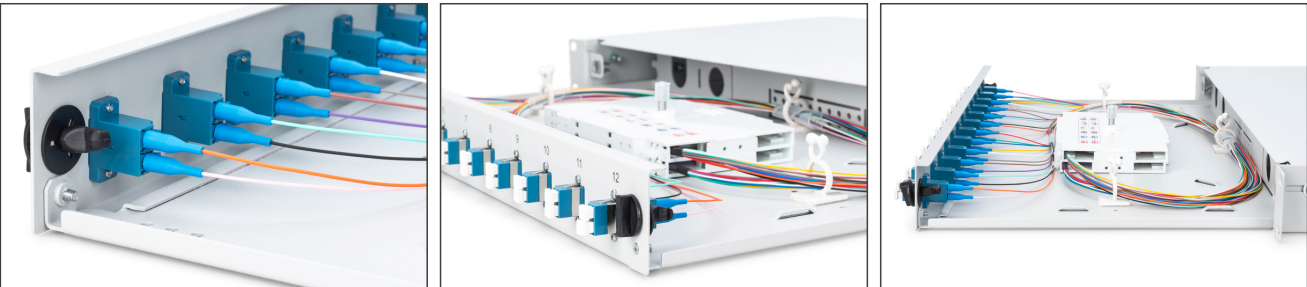
- 240mm depth
- M20/M25 screw, cassette, cassette cover and strain relief included
- Sliding

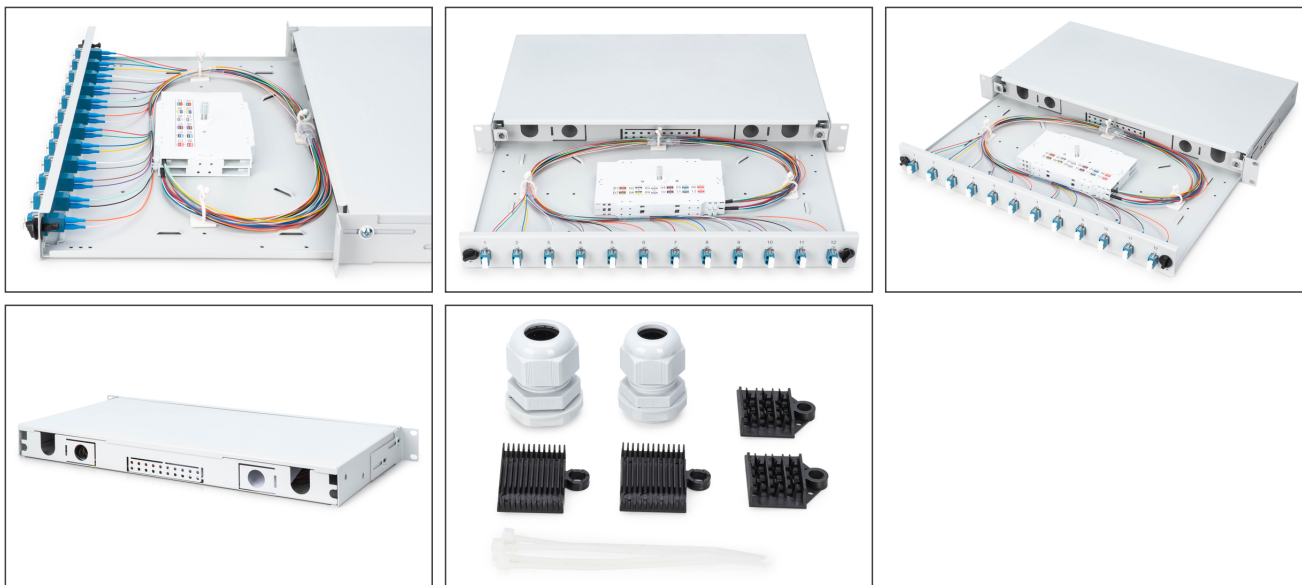
**Attributes**

- Assembly: Splice Box
- Color: light grey, RAL 7035
- Connector type: LC / UPC / duplex
- Fiber class: OS2
- Number of fibers: 24
- Type: sliding

Logistics						
	Number (pcs)	Weight (kg)	Depth (cm)	Width (cm)	Height (cm)	cm³
Packaging Unit Carton	5	15.30	53.50	31.50	5.50	9,268.88
Packaging Unit Inside	1	3.06	43.30	24.30	3.50	3,682.67
Packaging Unit Single	1	3.06	43.30	24.30	3.50	3,682.67
Net single without Packaging	1	3.01	43.30	24.30	3.50	0.00

**More images:**





#### Safety notes

- Avoid direct contact with light sources: Fiber optic cables, especially those with active light sources such as lasers (e.g. in optical communication systems), can emit dangerous radiation that can damage eyes. Take care never to look directly into the light of an optical fiber, even if the light source is invisible to the naked eye.
- When working with fiber optic cables, especially during tests or when working with lasers, protective goggles should always be worn to protect against harmful radiation.
- When plugging and unplugging the cable, only grasp the plug and do not pull directly on the cable.
- Do not kink or crush: Fiber optic cables are sensitive to mechanical stress.
- To protect cables from physical damage, they should be laid in special ducts or with protective materials
- Keep cable connectors clean: Fiber optic cables are sensitive to dust and dirt. Even small particles on the connectors can severely impair the signal quality.
- Cables should not be used in environments with extremely high or very low temperatures. Observe the product information on the maximum operating temperature of the cable
- Check cables regularly for visible damage such as cracks, kinks or signs of wear. Defective cables should be replaced immediately.

#### EU responsible person

EU based economic operator ensuring the product complies with the required regulations.

ASSMANN Electronic GmbH  
Auf dem Schöffel 3  
Lüdenscheid, Germany  
<https://www.assmann.com>  
[info@assmann.com](mailto:info@assmann.com)