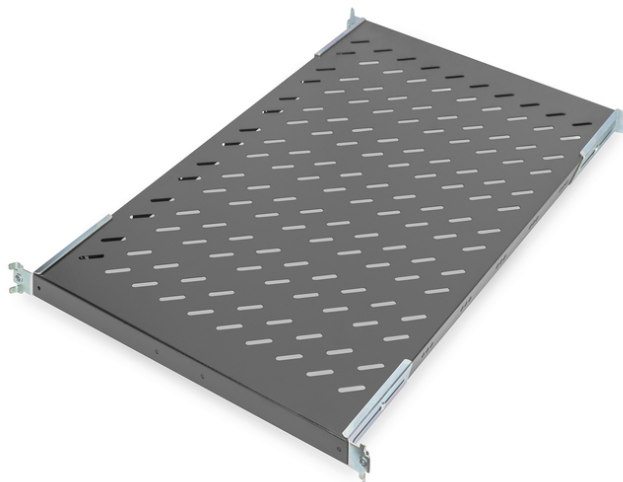


# DIGITUS® Prateleira para armários de rede e servidores

DN-19 TRAY1-1000-ECB  
EAN 4016032262480



**Prateleira fixa 1U f. armários a partir de 1000 mm de profundidade 44x486x770 mm, até 50 kg, preto (RAL 9005)**

Prateleira fixa 1U f. a partir de 1000 mm de profundidade, 44x486x770 mm, até 50 kg, preto (RAL 9005)

- Fixação dos quatro perfis angulares
- Instalação fixa
- Chapa metálica robusta e perfurada
- Capacidade de carga até um máximo de 50 kg
- Requer 1U
- Completo com material de montagem
- Montagem em 4 pontos (calhas de perfil de 19" à frente e atrás)

#### Attributes

- Color: black, RAL 9005
- Load capacity: 50 kg
- Mounting type: Fixed mounting
- Units: 1
- Inch form factor (IEC 60297): 482.6 mm (19")
- Suitable cabinet depth: ≥ 1000 mm

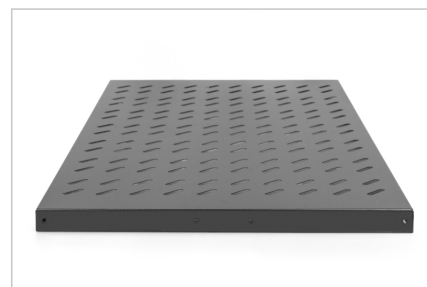
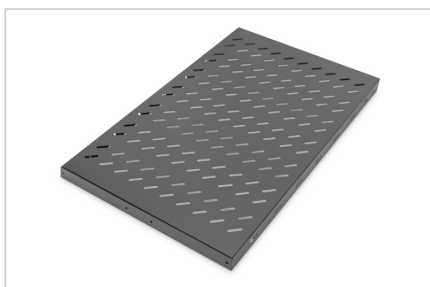
#### Package contents

- Conjunto de instalação (parafusos, porcas de caixa, anilhas)

#### Logistics

	Number (pcs)	Weight (kg)	Depth (cm)	Width (cm)	Height (cm)	cm³
Packaging Unit Carton	4	18.00	46.00	22.00	81.50	82,478.00
Packaging Unit Inside	1	4.50	79.50	50.00	5.50	21,862.50
Packaging Unit Single	1	4.50	79.50	50.00	5.50	21,862.50
Net single without Packaging	1	3.60	77.00	48.60	4.40	10,575.00

#### More images:





### Safety notes

- When installing and using the accessory product for network cabinets, observe the respective safety instructions of the manufacturer or the cabinet system in which you want to use the accessory.

### EU responsible person

EU based economic operator ensuring the product complies with the required regulations.

ASSMANN Electronic GmbH  
Auf dem Schüffel 3  
Lüdenscheid, Germany  
<https://www.assmann.com>  
[info@assmann.com](mailto:info@assmann.com)