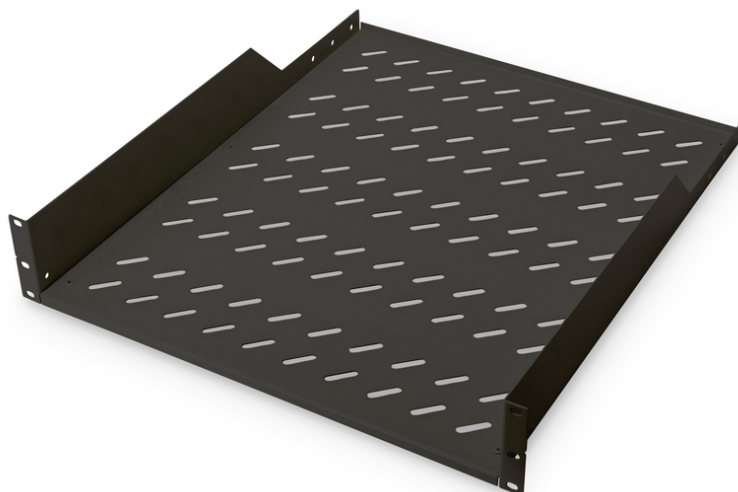


# DIGITUS Полки для сетевых шкафов

**DN-19 TRAY-2-55-SW**  
**EAN 4016032256830**



## 2U fixed shelf for racks from 800 mm depth 88x482x549 mm, up to 25 kg, black (RAL 9005)

The shelves for fixed mounting can be installed easy on the two front 483 mm (19") profile rails of your 483 mm (19") network- or server cabinet. Due to their stable, perforated steel sheet with a high load capacity, they are the optimal surface for components which are not 483 mm (19") suitable.

- Установлены неподвижно
- Крепёжный материал входит в комплект поставки

## Attributes

- Color: black, RAL 9005
- Load capacity: 25 kg
- Mounting type: Fixed mounting
- Units: 2
- Inch form factor (IEC 60297): 482.6 mm (19")
- Suitable cabinet depth: ≥ 800 mm

## Package contents

- Installation set (screws, cage nuts, washers)

Logistics						
	Number (pcs)	Weight (kg)	Depth (cm)	Width (cm)	Height (cm)	cm <sup>3</sup>
Packaging Unit Carton	5	17.71	50.00	59.00	51.50	151,925.00
Packaging Unit Inside	1	3.54	49.30	57.40	9.50	26,883.30
Packaging Unit Single	1	3.54	50.00	59.00	10.00	29,500.00
Net single without Packaging	1	2.80	55.20	48.30	8.80	14,628.00

## Safety notes

- When installing and using the accessory product for network cabinets, observe the respective safety instructions of the manufacturer or the cabinet system in which you want to use the accessory.

## EU responsible person

EU based economic operator ensuring the product complies with the required regulations.

ASSMANN Electronic GmbH  
Auf dem Schüffel 3  
Lüdenscheid, Germany  
<https://www.assmann.com>  
[info@assmann.com](mailto:info@assmann.com)