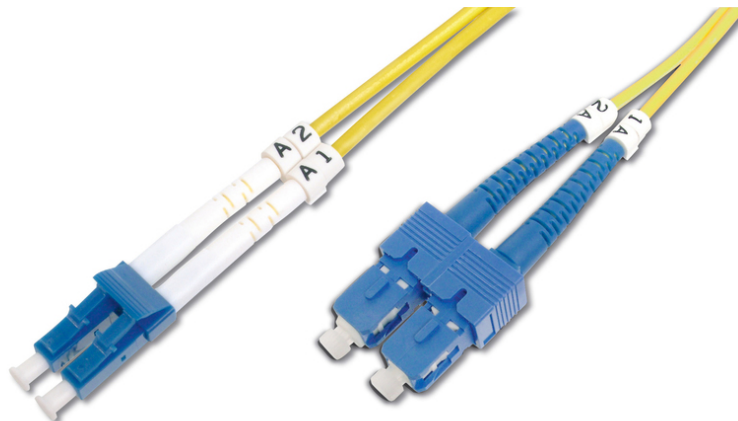


# DIGITUS® Cabo de ligação de fibra ótica monomodo, LC / SC

DK-2932-10

EAN 4016032249689



**Cabo de ligação de fibra ótica, duplex, LC para SC SM OS2 09/125 µ, 10 m**

Cabo de ligação de fibra ótica, duplex, LC para SC, SM OS2 09/125 µ, 10 m

**Desempenho e qualidade de ligação excepcionais para a sua rede.**

- Cabo duplex
- LSOH
- Tampão com virola de cerâmica
- Diâmetro do cabo 2 mm
- Embalagem individual com protocolo de medição
- Categoria da fibra: G.657.A2

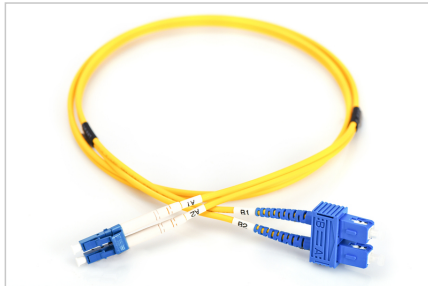
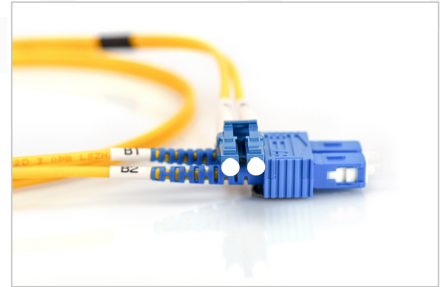
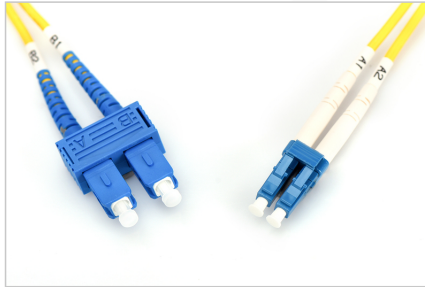
**Attributes**

- Assortment: Fiber Optic Patch Cables
- Boot: single-color
- Cable diameter: 2 mm
- Cable type: I-VH 2E9/125µ
- Color cable: yellow
- Connector 1: LC
- Connector 2: SC
- Fiber class: OS2
- Fiber diameter: 9/125µ
- Mode: Singlemode
- Packaging: DIGITUS Polybag
- Length: 10 m

Logistics						
	Number (pcs)	Weight (kg)	Depth (cm)	Width (cm)	Height (cm)	cm³
Packaging Unit Carton	40	7.47	41.00	41.00	28.00	47,068.00
Packaging Unit Inside	5	0.93	19.00	19.00	12.00	4,332.00
Packaging Unit Single	1	0.19	17.00	17.00	2.40	693.60
Net single without Packaging	1	0.14	15.00	15.00	2.40	0.00

**More images:**

Part No.	DK-2932-10			
Length	10 m			
Cable Type	Duplex SM 9/125		OS2 LSZH	
	END A		END B	
Connector Type	LC		SC	
Insertion Loss (dB)	0.17	0.17	0.10	0.21
	53.7	54.7	53.1	54.3
Return Loss (dB)	PASS			
Q.C.	PASS			



**Safety notes**

- Avoid direct contact with light sources: Fiber optic cables, especially those with active light sources such as lasers (e.g. in optical communication systems), can emit dangerous radiation that can damage eyes. Take care never to look directly into the light of an optical fiber, even if the light source is invisible to the naked eye.
- When working with fiber optic cables, especially during tests or when working with lasers, protective goggles should always be worn to protect against harmful radiation.
- When plugging and unplugging the cable, only grasp the plug and do not pull directly on the cable.
- Do not kink or crush: Fiber optic cables are sensitive to mechanical stress.
- To protect cables from physical damage, they should be laid in special ducts or with protective materials
- Keep cable connectors clean: Fiber optic cables are sensitive to dust and dirt. Even small particles on the connectors can severely impair the signal quality.
- Cables should not be used in environments with extremely high or very low temperatures. Observe the product information on the maximum operating temperature of the cable
- Check cables regularly for visible damage such as cracks, kinks or signs of wear. Defective cables should be replaced immediately.

**EU responsible person**

EU based economic operator ensuring the product complies with the required regulations.

ASSMANN Electronic GmbH  
 Auf dem Schüffel 3  
 Lüdenscheid, Germany  
<https://www.assmann.com>  
[info@assmann.com](mailto:info@assmann.com)