

DIGITUS® DIGITUS CAT 6, Class E $\times\times\times\times-\times\times\times\times\times\times$

DN-91648U

EAN 4016032241560



CAT 6 patch panel, unshielded, 48-port RJ45, 8P8C, LSA, 2U, rack mount, bl, 482x44x109 mm

The unshielded CAT 6 Patch Panel from DIGITUS® is available as 16- or 24-port (1 High unit) or 48-port version (2 High units). It is manufactured acc. to Link Performance Class E, for up to 250 MHz, EN 50173 and ISO/IEC 11801. It is UL certified. The housing is made of 1.5 mm galvanized cold-rolled steel is is therefore perfectly suitable for 19" rack mounting.

Digitus® Patch Panel 48-Port RJ45, 8P8C, LSA, 2U, rack mount, black.

- **Features:**
- **Unshielded Patch Panel 48-Port RJ45, 8P8C, LSA, 2U, rack mount, black** EIA/TIA 568 A & B

- **48 RJ45 ports**
- **360° rotation**
- **1.5 mm galvanized cold-rolled steel housing**
- **UL certified**
- **1.5 mm galvanized cold-rolled steel housing**

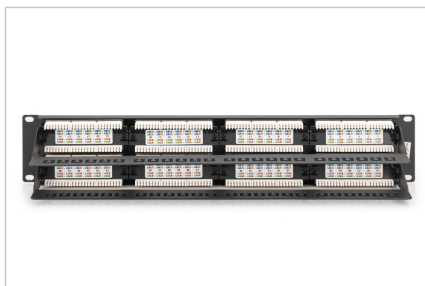
Attributes

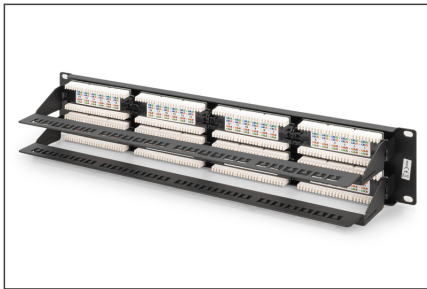
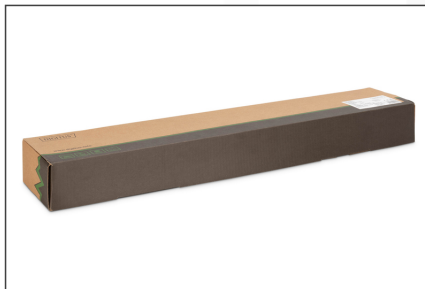
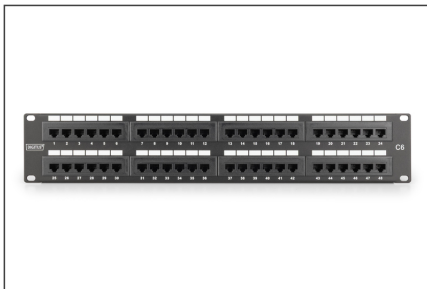
- Color: black, RAL 9005
- Ports: 48
- Units: 2

Category: CAT 6

Logistics						
	Number (pcs)	Weight (kg)	Depth (cm)	Width (cm)	Height (cm)	cm ³
Packaging Unit Carton	8	9.50	58.00	34.00	33.00	65,076.00
Packaging Unit Inside	1	1.19	7.50	56.00	15.00	6,300.00
Packaging Unit Single	1	1.19	7.50	56.00	15.00	6,300.00
Net single without Packaging	1	0.92	3.00	48.50	9.00	1,957.50

More images:





Safety notes

- Protect product from moisture
- Avoid antistatic charging when installing the product
- Observe the specifications of the raw cable manufacturer during installation

EU responsible person

EU based economic operator ensuring the product complies with the required regulations.

ASSMANN Electronic GmbH
Auf dem Schüffel 3
Lüdenscheid, Germany
<https://www.assmann.com>
info@assmann.com