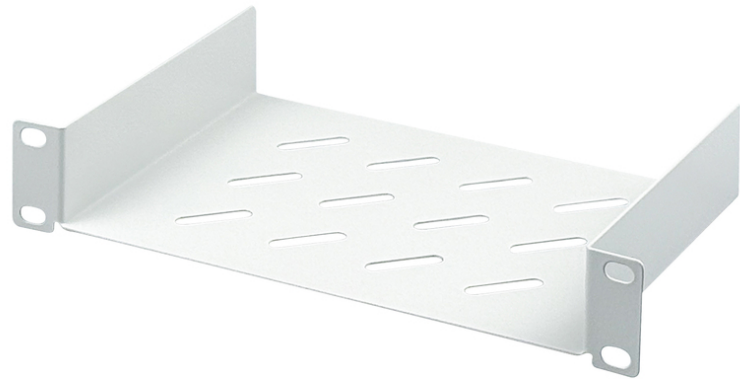


# DIGITUS 254 mm (10") 1U shelf

DN-10 TRAY-1  
EAN 4016032139836



**254 mm (10") 1U fixed shelf 44x254x150 mm, color grey (RAL 7035)**

The 10" shelves from DIGITUS® consist of a sturdy, perforated metal sheet and can be installed quickly and easily on the front 10" profiles. They are supplied complete with mounting material and are therefore ready for immediate use. Use the DIGITUS® 10" shelves to store components that are not mounted directly in your 10" enclosure.

- Sturdy, perforated metal sheet
- Complete with mounting material
- Width x depth of storage surface inside: 210 x 147 mm
- Width x depth of the entire shelf outside: 254 x 149 mm
- 2-point attachment (front 10" profile rails)

**Attributes**

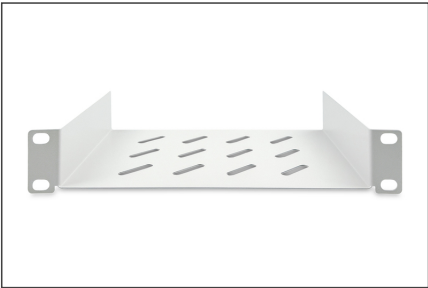
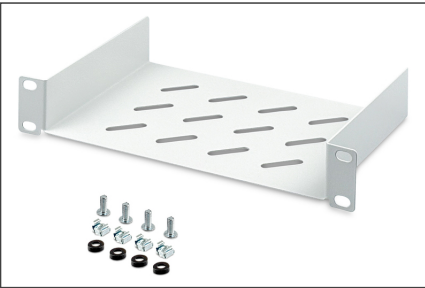
- Color: light grey, RAL 7035
- Load capacity: 25 kg
- Mounting type: Fixed mounting
- Units: 1
- Inch form factor (IEC 60297): 254 mm (10")
- Suitable cabinet depth: all

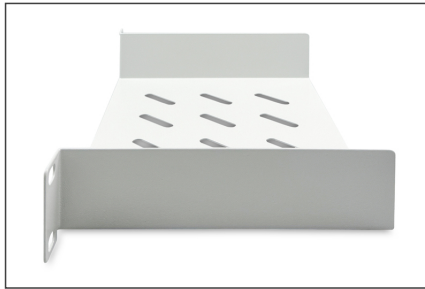
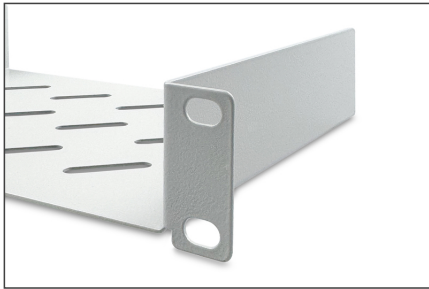
**Package contents**

- Installation set (screws, cage nuts, washers)

Logistics						
	Number (pcs)	Weight (kg)	Depth (cm)	Width (cm)	Height (cm)	cm³
Packaging Unit Carton	40	22.40	33.00	52.00	58.00	99,528.00
Packaging Unit Inside	1	0.56	15.80	28.80	5.00	2,275.20
Packaging Unit Single	1	0.56	15.80	28.80	5.00	2,275.20
Net single without Packaging	1	0.37	15.00	25.40	4.40	1,606.50

**More images:**



**Safety notes**

- When installing and using the accessory product for network cabinets, observe the respective safety instructions of the manufacturer or the cabinet system in which you want to use the accessory.

**EU responsible person**

EU based economic operator ensuring the product complies with the required regulations.

ASSMANN Electronic GmbH  
Auf dem Schöffel 3  
Lüdenscheid, Germany  
<https://www.assmann.com>  
[info@assmann.com](mailto:info@assmann.com)